

2  
1958

LIBRARY  
THE AMERICAN NUMISMATIC SOCIETY  
BROADWAY AT 156TH ST.  
NEW YORK CITY

MAR 21 1958

# GLENDINING & Co.

LIMITED

7 Blenheim Street, New Bond Street,  
London, W.1.

Phone MAYFAIR 0416

Catalogue of  
*Part VI*  
of the Celebrated Collection of

## COINS

*formed by the late RICHARD CYRIL LOCKETT, Esq.*

GREEK - PART II

DAYS OF SALE

**Wednesday, February 12th, 1958**

and FOLLOWING DAY

Commencing at 1 p.m. precisely

---

ON VIEW Monday & Tuesday prior and mornings of Sale

Illustrated Priced Catalogue 23 Plates

Price 10/-

## CONDITIONS OF SALE.

---

FIRST.—The highest bidder to be the buyer; and if any dispute arise between two or more bidders, the lot so in dispute shall be immediately put up again and resold, provided the auctioneer cannot decide the said dispute.

SECOND.—No person to advance less than 1s.; above five pounds 5s.; and so on in proportion.

THIRD.—All lots are put up for sale subject (a) to any reserve price imposed by the seller and (b) to the right of the seller to bid either personally or else by any one person who may be the Auctioneer.

FOURTH.—The purchasers to give in their names and places of abode, and to pay down 5s. in the pound, or more in part of payment, or the whole of the purchase-money, *if required*; in default of which the lot or lots so purchased to be immediately put up again and resold.

FIFTH.—Each lot is believed to be genuine, but should any lot prove to be a forgery, or reprint, or wrongly described in the catalogue, the purchaser is at liberty to take or reject it, provided always that notice of such rejection be made and the lot returned within seven days from date of sale.

SIXTH.—The Auctioneers will not hold themselves responsible for any action that may arise, acting solely as agents between buyer and seller and for both equitably.

The Auctioneers will not hold themselves responsible for the safe custody of any lots left more than three days after the date of sale.

---

### Please Note.

The metal in which the coins are struck is indicated thus:—

*A*=gold, *AR*=silver, *Æ*=copper or bronze.

*El*=Electrum (an alloy of gold and silver).

*Bl*=Billon (an alloy of silver and copper).

Care is taken to describe accurately the condition of coins and medals, using the following scale: *Extremely fine*, *Very fine*, *Fine*, and *Good*. Where no condition is stated it may be assumed that the coins and medals are not in good condition.

$\frac{2}{1958}$

CATALOGUE OF  
PART VI  
OF THE  
Celebrated Collection  
of  
COINS

formed by the late  
RICHARD CYRIL LOCKETT, Esq.

GREEK—PART II

Black Sea District, Thrace, Macedon, Thessaly, Illyricum,  
Epirus, Corcyra, Acarnania and Aetolia.

---

Days of Sale :

WEDNESDAY, 12th FEB., 1958   Lots 988 - 1291  
THURSDAY, 13th FEB., 1958   Lots 1292 - 1552

---

MESSRS. GLENDINING & CO. LTD  
7, BLENHEIM STREET  
LONDON W.1  
1958



## FOREWORD

This portion, Part VI (Greek II), of the sale of the Lockett Collection, is a continuation of the Greek series and includes the coins of the Black Sea District, Thrace, Macedon, Thessaly, Illyricum, Epirus, Corcyra, Acarnania, and Aetolia. The corresponding numbers in the S.N.G. Volume III are from 1073 to 1690, with a few coins added. The relative coppers are in 20 lots, numbered from 1533 to 1552, at the end of the sale.

All single lots have been illustrated in the 23 plates, as well as certain other pieces as noted in the text. Reference to the plates will show that many important and desirable pieces are now being offered.

The weight in grammes, as recorded in the S.N.G., is noted of each coin.

Coins are struck in silver unless stated otherwise.

A. H. BALDWIN & SONS LTD.



Catalogue  
of PART VI  
of the  
CELEBRATED COLLECTION  
of  
COINS  
formed by the late  
RICHARD CYRIL LOCKETT, Esq.

Greek - II

*First Day's Sale*

Wednesday February 12th 1958

Commencing at 1 p.m. precisely

BLACK SEA DISTRICT

*Lot Syl. No.*  
*No. & Wt.*

**Apollonia Pontica**

988	1073 1.31	Diobol after B.C. 400. Gorgoneion. <i>Rev.</i> Anchor: on l., A; on r., crayfish; in field to l., KTH. <i>Extremely fine and sharp.</i>	4 0 0
			1

989	1074 4.52	TAURIC CHERSONESUS. Drachm. Circ. B.C. 300-200. Head of Herakles to r., wearing lion-skin; cm. thunderbolt. <i>Rev.</i> XEP. Charging bull to l.; cm. dolphin. <i>Very fine and rare.</i>	9 10 0
			1

\* \* *Ex Grand Duke Alexander Mihailovitch Collection.*

990	1075 3.77	Another. Cm. crayfish on <i>obv.</i> (not noted in Sylloge). <i>Rev.</i> cm. dolphin; legend effaced. <i>Very fine and rare.</i>	10 0 0
			1

\* \* *Same source.*

991	1076 2.87	Drachm of same Period. Head of Artemis, wreathed, to r. <i>Rev.</i> XEP. Artemis holding strung bow, slaying stag; in ex., MENECTPA. <i>Very fine and rare.</i>	15 0 0
			1

\* \* *Same source. See note in Sylloge regarding weight.*

			<i>Lot</i>	<i>Syl. No.</i>	
			<i>No.</i>	<i>&amp; Wt.</i>	
7	10	0	992	1077 1.86	Hemidrachm. Similar. <i>Rev.</i> XEP. Strung bow and quiver; beneath, YMNOY. <i>Very fine and very rare.</i> 1
∴ <i>Same source.</i>					
18	0	0	993	1078 4.08	Drachm of same Period. Head of Artemis r., wreathed and wearing turreted crown; behind, strung bow and quiver. <i>Rev.</i> XEP. Stag standing to r.; in ex., MOIPIOΣ. Overstruck on preceding types. <i>Very fine and rare.</i> 1
∴ <i>Same source.</i>					
32	0	0	994	1079 4.74	Another. Similar. <i>In extremely fine state (also overstruck).</i> 1
∴ <i>Same source.</i>					
21	0	0	995	1080 3.38	Drachm. Head of Artemis r., wreathed, with bow and quiver at shoulder. <i>Rev.</i> Artemis l., holding strung bow, slaying stag; on r., ΔHMHTPIOY; ethnic effaced. <i>Very fine and rare (traces of overstriking).</i> 1
∴ <i>Same source.</i>					

## Istrus

7	0	0	996	1081 5.05	Drachm. Fourth Century B.C. Heads of the Dioscuri inverted. <i>Rev.</i> ΙΣΤΡΙΑ. Sea-eagle on dolphin l.; beneath eagle, three pellets (only one noted in Sylloge); beneath dolphin, monogram. <i>Very fine.</i> 1
10	0	0	997	1082 5.79	Another, without the pellets on <i>rev.</i> and a sharper specimen. 1
10	0	0	998	1083 1.37	Trihemionbol? Same types; one pellet under eagle's neck; beneath dolphin, monogram. B.M.C. 14. <i>Extremely fine, sharp, and a rare little piece.</i> 1
∴ <i>Ex Schlessinger (Berlin), 4: ii: 1932, Lot 74, Hermitage Collection.</i>					

## Olbia

32	0	0	999	1084 5.75	Before Alexander the Great. Drachm. Head of Athena to r., wearing crested Corinthian helmet; behind, cm. branch. <i>Rev.</i> ΟΑΒΙΟ. Round shield and spear; beneath, ΠΟΑ[Ι]; on l., mono. <i>Very fine and very rare.</i> 1
----	---	---	-----	--------------	---

<i>Lot</i>	<i>Syl. No.</i>			
<i>No.</i>	<i>&amp; Wt.</i>			
1000	1085 2.60	Hemidrachm of same Period. Head of Apollo to r., laur. <i>Rev.</i> OABIO. Lyre; to l. and r., IIY; beneath, A● (not ●A as in Syl.). <i>Fine and very rare.</i>	6 10 0	1
1001	1086 4.00	Similar but of coarser style. <i>Obv.</i> with cm. helmet with cheek pieces. <i>Rev.</i> To l. of lyre, monogram; to r., A. <i>Very fine and very rare.</i>	7 10 0	1
∴ <i>Ex Grand Duke Alexander Mihailovitch Collection.</i>				
1002	1087 8.43	A Coson, King of the Scythians. Middle of the First Century B.C. Gold Stater struck at Olbia. KOΣΩN. Consul between lictors walking to l.; in front, monogram for Olbia; border of dots. <i>Rev.</i> Eagle, with wreath in claw, standing to l., on sceptre to l.; border of dots. <i>Very fine and scarce.</i>	26 0 0	1
∴ <i>Ex Bement Collection, Lot 902.</i>				
<b>Panticapaeum</b>				
1003	1088 1.74	Fifth Century B.C. Diobol. Lion's scalp facing. <i>Rev.</i> Incuse square quartered in swastika pattern, on alternate arms of swastika, two stars. <i>A very fine little piece and rare.</i>	13 10 0	1
1004	1089 1.49	Another, of flatter style, the <i>obv.</i> similar. <i>Rev.</i> Central star in pattern; AΠOΛ on quarterings. Apollonia appears to have been the early name of the settlement. <i>Fine and rare.</i>	8 0 0	1
∴ <i>Ex Ratto (Lugano), 4: iv: 1927, Lot 932.</i>				
1005	1090 1.02	Another, similar. <i>Rev.</i> On alternate quarterings, two stars and AII (initials of either name). <i>Fine (the obv. off-centre) and rare.</i>	3 0 0	1
1006	1091 1.67	Another, similar. <i>Rev.</i> Central star; IIANT on quarter- ings. <i>Fine and rare.</i>	7 10 0	1
1007	1092 0.13	Quarter Obol? Similar. <i>Rev.</i> IIANT dispersed between the rays of a star. <i>Very fine for such a tiny piece and very rare.</i>	3 10 0	1
1008	1093 1.47	Diobol of slightly later date. Similar <i>obv.</i> <i>Rev.</i> IIANTI. Ram's head r.; all in incuse square. <i>Very fine, especially the rev., and very rare.</i>	30 0 0	1
∴ <i>Ex Ars Classica XVI (1933), Lot 1080.</i>				

			Lot No.	Syl. No. & Wt.			
9	0	0	1009	1094 0.36	Hemiobol of same types. <i>Rev.</i> Reads IIANT. <i>Very fine and very rare.</i>	1	
					∴ <i>Ex Ratto (Lugano), 4: iv: 1927, Lot 935.</i>		
420	0	0	1010	1095 9.07	A' Circ. B.C. 350. Gold Stater. Head of bearded Satyr to l., with pointed animal ear, wearing ivy-wreath. R: IIAN. Horned griffin l., with spear between teeth, on corn-ear to l. <i>Extremely fine, well centred, widespread and very rare.</i>	1	
					∴ <i>Ex Naville IV (1922), Lot 515.</i>		
48	0	0	1011	1096 3.55	BEFORE Circ. B.C. 400-300. Drachm. Head of bearded Satyr threequarter-face towards l., with pointed animal ears. <i>Rev.</i> Bull's head to l.; around, IIAN. <i>Very fine and very rare.</i>	1	
65	0	0	1012	1097 2.19	Hemidrachm? Same type but towards r. <i>Rev.</i> IIANTI (in ex.). Lion prowling to r. <i>Almost extremely fine (perhaps a plated flan) and very rare.</i>	1	
					∴ <i>Ex Buraschloff Collection (not noted in Sylloge).</i>		
16	0	0	1013	1098 2.52	Another. Similar type towards l. Satyr wears ivy-wreath. <i>Rev.</i> IIANTI. Lion r., attacking stag r. <i>Fine and very rare.</i>	1	
					∴ <i>Ex Ars Classica XV (1930), Lot 586.</i>		
26	0	0	1014	1099 2.46	Another. Satyr without wreath. <i>Rev.</i> IIANTI (in. ex.). Lion l., spear between teeth. <i>Very fine and very rare.</i>	1	
33	0	0	1015	1100 2.57	Another. Similar, but Satyr beardless and wears ivy-wreath. <i>Rev.</i> IIAN. Lion's mask facing. <i>Very fine and very rare.</i>	1	
					∴ <i>Ex De Nanteuil Collection.</i>		
20	0	0	1016	1101 2.27	Another. Head of bearded Satyr to r. <i>Rev.</i> IIANTI. Lion's head to r. <i>Almost very fine and very rare.</i>	1	
					∴ <i>Ex Schlessinger (Berlin), 4: ii: 1935, Lot 430; Hermitage Collection.</i>		
20	0	0	1017	1102 8.72	Circ. B.C. 300-200 and later. Didrachm? Head of young Dionysos r., wearing ivy-wreath. <i>Rev.</i> IIANTI-KAIIAITON in centre of ivy-wreath with bunch of grapes hanging from the tie at the top. <i>Extremely fine and rare.</i>	1	
					∴ <i>Ex Bement 884.</i>		

<i>Lot</i>	<i>Syl. No.</i>	<i>No. &amp; Wt.</i>			
1018	1103	3.85	Drachm. Head of Artemis r., strung bow and quiver at shoulder. <i>Rev.</i> IIANTIKAIIAITΩN. Stag feeding r.; above, monogram. <i>Fine and rare.</i>	6 10 0	1
1019	1104	3.85	Drachm. Head of Apollo r., laur. <i>Rev.</i> IIANTIKA—IIAITΩN. Spear-head and bow in case. An interesting piece, for the head of Apollo bears the features of Mithradates VI (the Great). <i>Fine and very rare.</i>	7 10 0	1
1020	1105	3.73	Another. Similar <i>obv.</i> <i>Rev.</i> IIAN. Eagle standing r. with spread wings. The silver of somewhat base quality. <i>Fine and very rare.</i>	7 0 0	1
1021	1106	4.22	Another, with <i>rev.</i> a corn-ear; no ethnic. <i>Fine, but small flan, and rare.</i>	4 10 0	1
1022	1107	1.00	Another, the <i>obv.</i> of better style. <i>Rev.</i> IIANTIKA-IIAITΩN. Lyre. Incorrect weight given in Sylloge. <i>Has been pierced and plugged, otherwise fine and very rare.</i>	5 10 0	1
1023	1108	2.28	Another. <i>Rev.</i> Same inscription; forepart of horse r. Weight not in Sylloge, put to previous coin in error. <i>A little corrosion-pitted, otherwise fine and very rare.</i>	2 10 0	1

*Note.*—To students especially requiring pedigrees, it will be found that some of the foregoing pieces of Panticapaeum, though not bought for Mr. Lockett at the auction, came from Naville Sale V (1923), B.M. Dupls., and other sources.

## THRACE

### Abdera

1024	1109	29.73	Circ. B.C. 500. Octadrachm. Griffin seated to l. with rounded wing and raising r. foreleg; in front, -EP. <i>Rev.</i> Quadripartite incuse square, the punch seemingly having been re-cut over a previous design, of which traces still remain. (B.M. spec. has same marks). Ant. Münz, Nord-Griechenlands II, 1, 1 [Corpus], No. 11. <i>Very fine and extremely rare (four others known, one of those in B.M.).</i>	200 0 0	1
<i>Ex Pozzi 1063, and Ars Classica XVI (1933), Lot 1065 (not 1063, as in Syl.), E. G. Spencer-Churchill Collection (Sylloge I, 1, 96).</i>					

				<i>Lot No.</i>	<i>Syl. No. &amp; Wt.</i>		
640	0	0	1025	1110 29.49	Another, Circ. B.C. 520-515, of similar type. <i>Obv.</i> , in front, grapes. <i>Rev.</i> The surface in square granulated. Corpus No. 14. Otto 242, Pl. 7. <i>A very fine piece and extremely rare, only one other recorded with same obv.</i>	1	
∴ <i>Ex Ars Classica, ibid.</i> , Lot 1063.							
36	0	0	1026	1111 27.71	Another, circ. B.C. 520. The Griffin seated to l.; between forepaws, A; around, six pellets. <i>Rev.</i> The square smaller, with two quarters deeply incused. Corpus, p. 122 f. <i>Chisel-cut on obv.</i> , otherwise very good and extremely rare. Only two others known, one of those in Berlin Museum.	1	
∴ <i>Ex Pozzi</i> 1065.							
Mr. Robinson notes in Sylloge: "The attribution of this coin to Abdera has been doubted on insufficient grounds."							
260	0	0	1027	1112 14.74	Circ. B.C. 480-470. Tetradrachm. The Griffin, of later style, raises r. foreleg; in front, MEI'A: border of dots. <i>Rev.</i> The square flatter, more regular, and the surface of the quarterings granular. Corpus, 25. <i>Very fine and an extremely rare variety. Only one other known, in Berlin Museum.</i>	1	
100	0	0	1028	1113 14.76	Another. In front of griffin, a dancing satyr; above and to r., Σ—MOP (the Σ cut over another letter): border of dots. <i>Rev.</i> Similar to last. Corpus 29. <i>Very fine and very rare. Twelve known, two of them from these dies.</i>	1	
∴ <i>Ex Pozzi</i> 1067; <i>Prowe</i> (1904) 457, Pl. 4.							
310	0	0	1029	1114 14.83	Another. Around griffin, HP O Δ OTO: border of dots. <i>Rev.</i> Similar. Corpus —. <i>Extremely fine and a unique piece.</i>	1	
100	0	0	1030	1115 14.75	Circ. B.C. 492-480. The griffin prancing, with pointed wing; beneath, drinking-cup; around, EIII IA: border of dots. Corpus 24. <i>Very fine and very rare. Nine recorded, all from these dies.</i>	1	
∴ <i>Ex Ars Classica XV</i> (1930), Lot 552.							
100	0	0	1031	1116 14.77	Similar griffin; beneath, HIIH; above, on r., pellet: border of dots. Corpus —. <i>Very fine and a unique piece.</i>	1	

Lot Syl. No.  
No. & Wt.

- |      |               |  |         |
|------|---------------|--|---------|
| 1032 | 1117<br>14.63 | Similar type; above, male head to r.; beneath, $\text{H}\Lambda\text{H}$ : border of dots. Corpus 20 (this specimen). <i>Very fine and a unique piece.</i>   | 300 0 0 |
|      |               | <i>Ex Ars Classica XIV (1929), Lot 22; R. Allatini Collection.</i>   | 1       |
|      |               | <i>Note.</i> —The last two coins are the only known tetradrachms of this magistrate.   |         |
| 1033 | 1118<br>3.10  | Drachm, circ. B.C. 480-470, of similar type. The griffin with rounded wing; to r., $\Delta\text{EO}$ : border of dots. Corpus 36. <i>Fine and scarce.</i>  | 11 0 0  |
|      |               | <i>Ex Bement 832 and Weber 2367.</i>   | 1       |
| 1034 | 1119<br>3.34  | Another, the magistrate's name spaced out, $\Delta\text{ E O}$ . Corpus 36. <i>Very fine and scarce.</i>   | 16 0 0  |
|      |               |  | 1       |
| 1035 | 1120<br>2.11  | Another, but $\Delta\text{ EO}$ ; on a very small and light flan: no border. Corpus 36. <i>Very fine and scarce.</i>   | 7 10 0  |
|      |               | <i>Ex Bement 833.</i>  | 1       |
| 1036 | 1121<br>3.51  | Circ. B.C. 492-480. Similar, but reads $\text{H}\Lambda\text{H}$ ; no border. Corpus 37. <i>Very fine and a rare variety. Only ten known, six of those are in Museums.</i>   | 5 10 0  |
|      |               | <i>Ex Ars Classica XIII (1928), Lot 612.</i>   | 1       |
| 1037 | 1122<br>0.55  | Obol, circ. B.C. 470-449, of early style, no inscription. <i>Rev.</i> Square of deep type. Corpus, p. 1240. <i>Very fine and rare.</i>   | 5 10 0  |
|      |               | <i>Ex Bement 834 and Weber Collection 2369.</i>  | 1       |
| 1038 | 1123<br>14.94 | Circ. 473/470-460. Tetradrachm. Griffin, with rounded wing, seated l. on tunny-fish l., r. foreleg raised; around, $\text{K A}\Lambda\text{ M}\Lambda\text{A M}\Lambda\Sigma$ : border of dots. <i>Rev.</i> $\text{AB}\Delta\text{HP}\Lambda\text{TE}\Omega\text{N}$ around the sides of a shallow incuse square, within which, a granulated quadripartite square. Corpus 61. <i>An extremely fine piece and rare. Forty-two specimens recorded, but no others of this actual die-combination.</i> | 350 0 0 |
|      |               | <i>Ex Bement 835; Bourgey 12/1909, 87, Pl. 2.</i>  | 1       |

Lot Syl. No.  
No. & Wt.

100	0	0	1039	1121 14.41	Similar, but without fish; between forelegs, kantharos; no inscription. <i>Rev.</i> Similar type. Inscribed ΕΙΗΣΜΟ-ΡΔΟΤΟΡΜΟΚΑΑ. The last three letters are the initials of the moneyer's father. Corpus 58. <i>Very fine and rare. Sixteen recorded, five from these dies.</i>	1
62	0	0	1040	1125 14.76	Similar, but between forelegs, a pellet; above, a large die-break. (? traces of overstriking in field). <i>Rev.</i> inscribed ΕΙΗ ΜΥΘΕΟ. Corpus —. <i>Fine, and an extremely rare variety. Only one other recorded, in New York, and that from different dies.</i>	1
155	0	0	1041	1126 14.92	Circ. B.C. 460-449. The griffin prancing; above, kantharos. <i>Rev.</i> inscribed ΕΙΗ ΜΕΑΝΙΠΡΟ. Corpus 55. <i>Very fine and rare. Nine recorded, of which only one other is with this die-combination.</i>	1
					<i>Ex Pozzi 1074 and Naville V (1923), Lot 1529.</i>	
360	0	0	1042	1127 14.88	Similar, but griffin has pointed wing; below, on l., scrotum. <i>Rev.</i> ΕΙΗΝΕ ΣΤ ΙΟ [Σ]. Corpus 56. <i>Extremely fine, sharp and well-centred, a splendid piece and very rare. Eight recorded (all from same obverse die).</i>	1
					<i>Ex Ars Classica XVI (1933), Lot 1068; E. G. Spencer-Churchill Collection (Sylloge I, 1, 99); Bement 836; P. Mathey; Weber 2374; R. Allatini (1904), 97; Bunbury 565 and Wigan Collections.</i>	
165	0	0	1043	1128 14.61	The griffin squatting with r. foreleg raised. <i>Rev.</i> ΕΙΗΚΑΛΗΣΙΚ ΡΑΤΕΟΣ. Corpus 53. <i>Very fine (has been corroded, leaving a granular surface) and rare. Five coins in issue and five different die-combinations.</i>	1
					<i>Ex Pozzi 1075.</i>	
640	0	0	1044	1129 14.98	B.C. 460-449. Tetradrachm of reduced weight. Griffin raises both forelegs; beneath, scorpion to r. <i>Rev.</i> ΕΙΗΜΟΝΙΑΔΟΣ. The inner square containing a young male head to r. Corpus 81. <i>Extremely fine for this excessively rare variety. One other, from different dies, in B.M. The reverse is most exceptional for this period.</i>	1
					<i>Ex Bement 838 and R. Allatini Collections.</i>	

<i>Lot No.</i>	<i>Syl. No.</i>	<i>No. &amp; Wt.</i>			
1045	1130 12.27		Probably early Fourth Century B.C. Another, the griffin recumbent to l. <i>Rev.</i> ANAΞΙΠΟΛΙΣ; bearded, ithyphallic Pan, carrying throwing-stick over l. shoulder, and shading his eyes with r. hand: all in linear square within incuse square. Corpus —. <i>Fine (has been considerably scraped) and excessively rare. Only five specimens recorded.</i>	165	0 0
			∴ <i>Ex Schlessinger (Berlin) 4: ii: 1935, Lot 437; Hermitage Collection.</i>		
1046	1131 11.35		First quarter of Fourth Century B.C. ABΔHPI above the griffin. <i>Rev.</i> ΕΠΙΚΑΛΙΑΝΑΚΤΟΣ. Apollo walking to l., holds patera in outstretched r., branch of bay in l.; beside him, stag: all in linear square enclosed in incuse square. Corpus 97. <i>Very fine (an abrasion on griffin's shoulder and Apollo's chest weakly struck) and extremely rare. Only three other specimens recorded.</i>	330	0 0
			∴ <i>Ex Ars Classica XIII (1928), Lot 619.</i>		
1047	1132 11.64		ABΔH above (the griffin seated to l.); in front, bee. <i>Rev.</i> ΕΠΙΦΙΛΑΔΟΣ. Wreathed and bearded Herakles, holding club on knee with r., seated l., on lion-skin over rock. Corpus 105. <i>Very fine and extremely rare. Only five other specimens recorded.</i>	390	0 0
			∴ <i>Ex Naville IV (1922), Lot 486; Weber 2379.</i>		
1048	1133 11.21		ABΔHPI. Griffin recumbent l., r. foreleg raised. <i>Rev.</i> ΗΙΟΛΥΚΡΑΘΣ (the P reversed); Artemis holding bow and arrow in l. and branch in r. hand, standing r. with stag beside her. Possibly an overstruck piece? Aramaic lettering on <i>obv.</i> <i>Extremely fine and extremely rare. Only four other specimens recorded.</i>	580	0 0
			∴ <i>Ex Ars Classica XVII (1934), Lot 390; Pozzi 1091; Hirsch XIII (1905); Rhousopoulos Collection.</i>		
1049	1134 6.33		Circ. end of Fifth Century B.C. Didrachm. ABΔHPI-TEΩN. <i>Rev.</i> ΕΠΙΟΡΧΑΜΟ. Lion r. in small linear square: the whole in incuse square. Corpus 87. <i>A very fine piece and an extremely rare variety. Twenty-one specimens recorded, six with this obv., but this the only specimen of the reverse.</i>	50	0 0
			∴ <i>Ex Ars Classica XV (1930), Lot 554.</i>		



Lot Syl. No.  
No. & Wt.

- 1056 <sup>1141</sup> About end of Fifth Century B.C. Another. *Rev.* 12 0 0  
<sup>2.78</sup> ΕΗΙΙΠΩΤΕΩ. Three corn-stalks in small linear square;  
all in incuse square. Corpus 124. *Very fine and rare.*  
*Sixteen specimens recorded in many die-combinations.* 1  
∴ *Ex Pozzi 1084.*
- 1057 <sup>1142</sup> Circ. B.C. 492-470. Triobol. Griffin seated l., raising r. 6 10 0  
<sup>1.62</sup> foreleg. *Rev.* Ox head to l., the truncation ends with  
dotted line: in deep incuse square. Corpus 43. *Very*  
*fine and rare.* 1  
∴ *Ex Naville Sale 1928, Lot 613 (not noted in Sylloge).*
- 1058 <sup>1143</sup> Last quarter of Fifth Century B.C. Another. In front of 27 0 0  
<sup>1.72</sup> griffin, a bay-leaf. *Rev.* ΑΒΔ[Η] in angles of deep  
square; the truncation plain. cf. Corpus 127 (where the  
symbol is called a corn-grain). *Extremely fine and sharp,*  
*a splendid little piece of fine style and a very rare symbol.*  
*Only three others known.* 1
- 1059 <sup>1144</sup> The griffin about to spring; no symbol. *Rev.* ΠΠΩΤ ΗΣ. 14 10 0  
<sup>1.35</sup> Same type. Corpus 129. *Very fine and sharp (a little*  
*corrosion on obv.).* 1  
∴ *Ex Naville V (1923), Lot 1535.*
- 1060 — Drachm. No inscription. *Rev.* Incuse square, enclosing 7 0 0  
<sup>2.35</sup> linear square; within which, head to l., hair rolled;  
above, ΠΠΩΤ ΗΣ; in l. corner, ivy-leaf upwards. Corpus  
122. *Very fine.* 1
- 1061 <sup>1145</sup> B.C. 492-470. Obol. Griffin with rounded wing seated l., 8 10 0  
<sup>0.67</sup> with r. foreleg raised. *Rev.* Eagle's head r., in deep in-  
cuse square. cf. Corpus p. 124p. *Very fine and very rare.*  
*Only one other specimen recorded, Berlin Museum.* 1  
∴ *Ex Ars Classica XIII (1928), Lot 615.*
- 1062 <sup>1146</sup> B.C. 375-352. Tetradrachm. ΑΒΔΗ ΙΤΕΩΝ. Griffin 40 0 0  
<sup>10.05</sup> recumbent to r., with l. foreleg raised. *Rev.* Head of  
Apollo laur. to r., with short hair; to l. and r., ΕΗΙΔΙΟΝ  
ΕΥΣΑΔΟ[Σ]. An overstruck piece, with parts of  
original inscription and types evident on both sides.  
Corpus 165. *A very fine interesting piece and scarce.* 1  
∴ *Ex Pozzi 1094.*

				Lot No.	Syl. No. & Wt.		
44	0	0	1063	1147 10.19	Another, similar, but <i>obv.</i> type to 1. <i>Rev.</i> Similar, but ΕΠΙΑΝΑΞΙ ΗΟΛΙΟΣ. Corpus 145. <i>Also very fine, but on a smaller flan and not so sharp.</i>	1	
∴ Ex Pozzi 1093.							
7	10	0	1064	1148 10.19	Drachm of similar type. ΑΒΔΗΡ on <i>obv.</i> <i>Rev.</i> Apollo's head in a linear square; around, ΕΠΙΕΥΡΗΣΙΙΙΙΟΥ. Corpus 165. <i>Fine.</i>	1	
5	10	0	1065	1149 10.19	Another. ΑΒΔΗΡΠΙΤΕΩΝ. <i>Rev.</i>  ΕΙΙΙ ΠΙΙΩΝΑΚΤΟ [Σ]. Corpus 166. <i>Very fine (the rev. somewhat off-centre).</i>	1	
4	0	0	1066	1150 2.44	Another. ΕΠΙΙΙΟΛΥΦΑΝΤΟΥ. Corpus 168. <i>Fine (ragged edge).</i>	1	
∴ Ex Pozzi 1098.							

## Aenus

760	0	0	1067	1151 15.93	Circ. B.C. 474-472. Tetradrachm. Head of youthful Hermes in profile to r., wearing close-fitting petasos adorned with beads. <i>Rev.</i> ΑΙΝΙΟΝ (reversed). Caduceus, short-handled, upright and set diagonally across incuse square; the handle embellished with three pairs of bosses. Corpus 254. J. M. F. May, "Ainos, its History and Coinage, 474-341 B.C.", 1a (this coin). <i>Very fine for the coin, and this early first issue is excessively rare, only five other specimens being known.</i>	1
∴ Ex Ars Classica XIV (1929), Lot 211, and XIII (1928), Lot 578; E. G. Spencer-Churchill and R. Allatini Collections; Hirsch XVIII (1907), Lot 2307.						
16	0	0	1068	1152 1.28	Circ. B.C. 455-452. Diobol. Similar, but of coarser work and style. <i>Rev.</i> Α — Ι. Similar type, the handle plain. Corpus 255. May, 79a (this coin). <i>Rare, extremely fine and sharp.</i>	1
∴ Ex Pozzi 1011.						
280	0	0	1069	1153 16.23	Circ. B.C. 461-458. Tetradrachm. Similar but of differing style. <i>Rev.</i> ΑΙΝΙ. Goat walking to r.; in front, r., bald, bearded silen's head facing; all in deep incuse square. Corpus 261. May 39a (this coin). <i>Very fine and extremely rare. Only four other specimens recorded.</i>	1

Lot No.	Syl. No. & Wt.			
1070	1154 16.41	Circ. B.C. 466-463. Similar. <i>Rev.</i> AINI (reversed). Similar type; in front, r., boar's head r. Corpus 263. May 19a (this coin). <i>Very fine (almost extremely fine), a very pleasing piece, and a very rare issue. Only seven other specimens recorded.</i>	260	0 0
		<i>Ex Pozzi 1013.</i>	1	
1071	1155 16.11	Circ. B.C. 469-467. Similar. <i>Rev.</i> AINI; in front, r., fly to r. Corpus 266. May 13a (this coin). <i>Very fine, pleasing, and a very rare issue. Only four other specimens recorded.</i>	410	0 0
		<i>Ex Pozzi 1014.</i>	1	
1072	1156 16.12	Circ. B.C. 409-407. The hair in bushy curls with heavy locks lying over the forehead; additional pleat in petasos above the border. <i>Rev.</i> AIN I. Goat striding to r. to nibble at laurel-spray formed of two branches, on the larger of which are several berries: all in incuse square. Corpus 286. May 280a (this coin) and the only specimen recorded. <i>Very fine (a few slight scratches and abrasions) and a very desirable, unique piece.</i>	310	0 0
		<i>Ex Pozzi 1019.</i>	1	
1073	1157 16.71	Circ. B.C. 412-409. Similar, the curls more delicate in style; the petasos without the extra pleat. <i>Rev.</i> AIN I; in front, r., tall upright caduceus. Corpus 288. May 255a (this coin). <i>Extremely fine, well centred and sharp; a splendid piece and rare.</i>	350	0 0
		<i>Ex Pozzi 1025.</i>	1	
1074	1158 2.73	Circ. B.C. 408-406. Tetrobol. Fine style with loose curls on cheek and thick locks behind. <i>Rev.</i> AINI. Goat prancing r., r. foreleg uplifted; beneath the raised foreleg, a crab: all in incuse square. Corpus 291. May 288a (this coin). <i>Extremely fine and sharp (the obverse a shade off-centre).</i>	26	0 0
		<i>Ex Naville Sale 1928, Lot 584; Allatini Collection (not noted in Sylloge).</i>	1	
1075	1159 2.73	Circ. B.C. 431-429. Tetrobol. Petasos small and compact; the hair in formal curls either side of ear. <i>Rev.</i> AIN. Type r.; in front, double axe. Corpus 292. May 115b (this coin). <i>Extremely fine (the rev. a fraction off-centre).</i>	23	0 0
		<i>Ex Pozzi 1028.</i>	1	

			Lot No.	Syl. No. & Wt.			
12	0	0	1076	<sup>1161</sup> <sup>1.29</sup>	Circ. B.C. 408-406. Diobol. Similar types of differing style. AINI on <i>rev.</i> ; goat raises r. foreleg; beneath which crab. Corpus 295. May 304c. <i>Extremely fine</i> (nose of <i>Hermes weakly struck</i> ).	1	
					Ex <i>Ars Classica XII</i> (1926), Lot 1216.		
19	10	0	1077	<sup>1161</sup> <sup>1.26</sup>	Circ. B.C. 423-420. Diobol. Similar types; on the <i>rev.</i> AINI and the goat has l. foreleg advanced, bending to nibble at vine-plant. Corpus 298. May 211b (this coin). <i>Extremely fine</i> .	1	
					Ex <i>same source</i> , Lot 1218.		
8	0	0	1078	<sup>1161</sup> <sup>1.25</sup>	Circ. B.C. 425-422. Diobol. <i>Rev.</i> AINI. Type to l. ( <i>sic</i> ), l. foreleg raised to trample on sapling, at top of which goat bends to nibble. Corpus 299. May 206a (this coin). <i>Very fine but a shade small</i> .	1	
					Ex <i>same source</i> , Lot 1219.		
7	0	0	1079	<sup>1163</sup> <sup>1.29</sup>	Circ. B.C. 417-414. Diobol. <i>Rev.</i> AINI. The goat to r.; in front, ivy-branch. Corpus 301. May 241a (this coin). <i>Very fine</i> .	1	
					Ex <i>Pozzi</i> 1032.		
11	0	0	1080	<sup>1164</sup> <sup>1.28</sup>	Circ. B.C. 427-424. Diobol. <i>Rev.</i> AIN: in front of goat to r., a stylised vine-tendril. Corpus 303. May 176a (this coin). <i>Very fine</i> .	1	
					Ex <i>Pozzi</i> 1033.		
9	0	0	1081	<sup>1165</sup> <sup>1.32</sup>	Circ. B.C. 429-426. Diobol. <i>Rev.</i> AIN; in front of goat to r., knotted club, downwards. Corpus 306. May 136a (this coin). <i>Extremely fine but a shade small</i> .	1	
					Ex <i>Pozzi</i> 1030.		
11	0	0	1082	<sup>1166</sup> <sup>1.32</sup>	Another, from different dies. <i>Also extremely fine but wider spread</i> . May 139a (this coin).	1	
					Ex <i>Ars Classica XII</i> (1926), Lot 1220.		
20	0	0	1083	<sup>1167</sup> <sup>1.32</sup>	Circ. B.C. 421-418. Diobol. Type to l. ( <i>sic</i> ). <i>Rev.</i> AINI beneath goat, l., which turns back its head and lowers it to be scratched by l. rear hoof. <i>Extremely fine, fine style, and a rare rev. type</i> .	1	
					Ex <i>Pozzi</i> 1036.		

<i>Lot</i>	<i>Syl. No.</i>	<i>No. &amp; Wt.</i>			
1084	1168 14.86	Circ. B.C. 398-395. Tetradrachm. Head of Hermes facing, wearing petasos, turning slightly to l. <i>Rev.</i> AINION. Goat r., poised over vine in leaf with two grape-clusters. Corpus 326. May 348a (this coin). <i>Very fine, fine attractive style, and very rare.</i>	220	0	0
		<i>Ex Dr. Greenwell and Alberto Sangorski Collections (not noted in Sylloge).</i>	1		
1085	1169 15.70	Circ. B.C. 400-397. Another, similar but of differing style (die-flaw from forehead to bridge of nose). <i>Rev.</i> AINIO N], similar; in front of goat, flaming race-torch. Corpus 336. May 343a (this coin). <i>Extremely fine and very rare.</i>	520	0	0
		<i>Ex Naville IV (1922), Lot 480.</i>	1		
1086	1170 14.99	Circ. B.C. 361-358. Another, similar but of differing style, with Hermes of very determined aspect. <i>Rev.</i> AINION in small letters; the goat to l.; in front, l., greave. Corpus 334. May 425a (this coin). <i>Extremely fine but for a little flaking of the granular surface, the coin apparently having been corroded at one time. A unique and very desirable piece.</i>	800	0	0
		<i>Ex G. Locker-Lampson Collection (Robinson, Cat. 133).</i>	1		
1087	1171 2.46	Circ. 363-360. Tetrobol. Similar type, of differing style. <i>Rev.</i> AINION. The goat to r.; in front, r., three-handled tripod, without lebes. Corpus 351. May 424c (this coin). <i>Very fine (some corrosion on rev.), and an extremely rare variety.</i>	40	0	0
		<i>Ex Naville X (1925), Lot 471.</i>	1		
1088	1172 1.27	Circ. B.C. 403-401. Diobol. Similar type, the petasos of flatter style. <i>Rev.</i> AINI. Goat r.; in front, r., EP (initials of mint authority). Corpus 360. May 322b (this coin). <i>Very fine and a very rare little piece.</i>	8	10	0
		<i>Ex same source, Lot 472.</i>	1		
1089	1173 17.83	Barbarous copy of the Tetradrachm of circ. B.C. 412-409 made by a Thracian tribe of the interior. Head of Hermes r., of barbarous style, wearing petasos. <i>Rev.</i> AN. Goat r., walking on groundline; in front, r., caduceus: all in incuse square. Corpus 288. May, Appendix C, No. 2 (this coin). <i>Very fine for the coin and very rare.</i>	14	0	0
	(sic)	<i>Ex Pozzi 1026.</i>	1		

Lot Syl. No.  
No. & Wt.

### Byzantium

- 7 10 0 1090 <sup>1174</sup><sub>1175</sub> Circ. B.C. 416-357. Persian siglos. Mono. for BY. Heifer pacing to l.; beneath, dolphin l. *Rev.* Quadripartite incuse square of mill-sail pattern, the surface of the indents finely dotted. *Very fine.* 1  
*Ex Pozzi 1127.*
- 4 10 0 1091 <sup>1176</sup><sub>1177</sub> Half-siglos of similar type. *Also very fine.* 1  
*Ex Hutton Collection.*
- 13 0 0 1092 <sup>1178</sup><sub>1179</sub> Circ. B.C. 357-340. Rhodian Tetradrachm. Same type; in front, monogram. *Rev.* Quadripartite incuse square of regular pattern, the quarters heavily dotted. This coin appears to have been overstruck, possibly on a Stater of Camirus. *Very fine and scarce.* 1  
*Ex Pozzi 1130.*
- 5 0 0 1093 <sup>1179</sup><sub>1180</sub> Rhodian Drachm of same period. In front of heifer, trident-head to l. *Rev.* The finely dotted square of mill-sail pattern. *Fine.* 1  
*Ex Pozzi 1131.*
- 560 0 0 1094 <sup>1178</sup><sub>1180</sub> Circ. B.C. 221. Tetradrachm. Head of Demeter r., veiled and wearing corn-wreath. *Rev.* Mono. for BY (in r. field); Poseidon seated on rocks to r., holding trident and aphlaston; in field to r., monogram; beneath, ΕΙΗ ΕΚΑΤΟ.ΩΠΟΥ. *Very fine for the coin and a very rare variety (not in B.M.C. or Baldwin-Brett).* 1  
*Ex Pozzi 1134.*

### Thracian Chersonese

- 260 0 0 1095 <sup>1179</sup><sub>1177</sub> Circ. B.C. 515-493. Time of the tyrant Miltiades. Tetradrachm. Lion r., head reverted and l. foreleg raised. *Rev.* Archaic head of Athena l., wearing close-fitting helmet with large crest (copied from the archaic coins of Athens). *Very fine for the coin and very rare.* 1  
*Ex Pozzi 1101.*

<i>Lot No.</i>	<i>Syl. No. &amp; Wt.</i>			
1096	<sup>1180</sup> <sup>2.31</sup>	Circ. B.C. 480-350. Light half-siglos or drachm. Forepart of lion to l., head reverted. <i>Rev.</i> Incuse square divided into four quarters, in two of them, a barley-corn and pellet. B.M.C. —. <i>Very fine and a scarce variety.</i>	3 10 0	1
		∴ <i>Ex Ratto (Lugano) 4: iv: 1927, Lot 836.</i>		
1097	<sup>1181</sup> <sup>2.31</sup>	Another. <i>Obv.</i> type to r. <i>Rev.</i> Two pellets in quarters. B.M.C. 8. <i>Extremely fine and sharp.</i>	3 10 0	1
		∴ <i>Ex Pozzi 1102.</i>		
1098	<sup>1182</sup> <sup>2.41</sup>	Same <i>obv.</i> type. <i>Rev.</i> Two of the quarters deep, with pellet in one and flower (?) in the other. B.M.C. 10? <i>Very fine.</i>	2 0 0	1
1099	<sup>1183</sup> <sup>2.46</sup>	<i>Rev.</i> with pellet and bunch of grapes. B.M.C. 11. <i>Very fine.</i>	2 10 0	1
		∴ <i>Ex Pozzi 1103.</i>		
1100	<sup>1184</sup> <sup>2.35</sup>	Pentagram and die-flaw in one quarter and an uncertain letter in another. <i>Very fine.</i>	2 10 0	1
1101	<sup>1185</sup> <sup>2.33</sup>	A and pellet in one square and star in another. <i>Very fine.</i>	2 10 0	1
		∴ <i>Ex Pozzi 1104.</i>		
1102	<sup>1186</sup> <sup>2.29</sup>	Monogram for AI' and pellet in one square and lizard in another. <i>Very fine.</i>	2 0 0	1

### Dicaea

1103	<sup>1187</sup> <sup>1.83</sup>	Circ. B.C. 500-480. Diobol. Head of bearded Herakles r., in lion's scalp; in front of lips, Δ: border of dots. <i>Rev.</i> Cock, r., in dotted square: all in incuse square. <i>Very fine and rare.</i>	27 0 0	1
		∴ <i>Ex Ars Classica XII (1926), Lot 1244 (where wrongly attributed).</i>		
1104	<sup>1188</sup> <sup>2.31</sup>	Circ. B.C. 450. Triobol? Head of nymph to l., hair waved and rolled. <i>Rev.</i> ΔIK. Head and neck of bull to r.: in incuse square. B.M.C. 4. <i>Very fine and rare.</i>	16 0 0	1
		∴ <i>Ex Pozzi 1062.</i>		



Lot Syl. No.  
No. & Wt.

1112	1196 14.09	Same symbol and name but the horse gallops to r. <i>Very fine, on small dumpy flan, and rare.</i>	52 0 0
		∴ <i>Ex Naville Sale 1928, Lot 600 (not noted in Sylloge).</i>	1
1113	1197 10.98	Circ. B.C. 400-350. The horse to l., with trailing rein; above, filleted bucranium. <i>Rev.</i> Moneyer EIII NEOMHNIO. B.M.C. 23. <i>Extremely fine, of neat attractive style, and rare.</i>	60 0 0
		∴ <i>Ex Pozzi 1048.</i>	1
1114	1198 10.93	Similar type; above, owl flying to front. <i>Rev.</i> EIII HIOAYAPHTOY, and on l., tortoise. B.M.C. —; Hist. Num. —. <i>Very fine and a very rare variety.</i>	42 0 0
			1
1115	1199 11.10	Horse l., with trailing rein as before; beneath, trident-head to l., downwards. <i>Rev.</i> EIII HIOAYNIKOY. B.M.C. —. <i>Very fine and a very rare variety.</i>	30 0 0
			1
1116	1200 10.65	MAPΩ beneath horse l. with rein trailing. <i>Rev.</i> EIII IKEΣIO and to l., caduceus, upright. B.M.C. 25 variety. <i>Very fine and rare.</i>	44 0 0
			1
1117	1201 2.63	Drachm. M A. Forepart of horse to r. <i>Rev.</i> Bunch of grapes on vine-branch, in dotted square; around, EIII NOYMHNIOY. B.M.C. —. <i>Very fine (shade weak on grapes) and a rare variety.</i>	6 0 0
		∴ <i>Ex Pozzi 1052.</i>	1
1118	1202 2.81	Another. Forepart of horse l., the division ornamented with dotted line; around, E Y II. <i>Rev.</i> M A. Section of vine with bunch of grapes in dotted square: all in incuse square. B.M.C. 31. <i>A beautiful little piece, good style, sharp and well-struck.</i>	22 0 0
		∴ <i>Ex Ars Classica XIV (1929), Lot 219.</i>	1
1119	1203 2.55	Same type but to r.; behind, MOA; in front, II. <i>Rev.</i> MA. Same type as preceding; bottom r., EIII. <i>Note:</i> The <i>rev.</i> is to be read first, and EIII construed with the moneyer's name. B.M.C. 38. <i>Fine.</i>	5 10 0
		∴ <i>Ex Pozzi 1051.</i>	1

				<i>Lot</i>	<i>Syl. No.</i>	
				<i>No.</i>	<i>&amp; Wt.</i>	
4	10	0	1120	1204		Type l.; around, II [O] A. <i>Rev.</i> MA. Usual type, symbol on l., a rhyton terminating in forepart of stag (not forepart of horse as described in B.M.C.). B.M.C. 36. <i>Almost very fine.</i>

1

Ex Pozzi 1050.

8	0	0	1121	1205 16.51		After B.C. 146. Tetradrachm. Head of young Dionysos r., wearing ivy-wreath. <i>Rev.</i> ΔIONYΣOY ΣΩTHPOΣ MAPONITΩN. Dionysos standing l., holding two spears with cloak and grapes; in field, two monograms. <i>Very fine except for striking on eye.</i>
---	---	---	------	---------------	--	---

1

7	10	0	1122	1206 15.97		Another, with different monograms. <i>Curiously double-struck on obv.</i>
---	----	---	------	---------------	--	---

1

### Mesembria

4	10	0	1123	1207 1.27		B.C. 450-350. Diobol. Crested helmet facing. <i>Rev.</i> META between the spokes of a radiate wheel. B.M.C. 2. <i>Very fine.</i>
---	----	---	------	--------------	--	--

1

Ex Naville V (1923), Lot 1581.

### Trierus

30	0	0	1124	1208 1.27		Circ. B.C. 450-400. Hemiobol. Head of Apollo r., laur.: border of dots. <i>Rev.</i> TPIH around branch of bay; in dotted square: all in incuse square. B.M.C. 3—7 variety. <i>Very fine and rare.</i>
----	---	---	------	--------------	--	---

1

Ex Pozzi 759, where incorrectly assigned to Chalcidean League.

## THRACIAN ISLANDS

### Samothrace

38	0	0	1125	1209 1.92		Diobol. Sphinx standing l., with curled wing and r. foreleg raised: border of dots. <i>Rev.</i> Incuse square quartered, the surface granulated. B.M.C. —; Hist. Num. —; "Transactions", page 211, 2c. <i>Extremely fine and very rare.</i>
----	---	---	------	--------------	--	---

1

Lot Syl. No.  
No. & Wt.

1126	1210 0.98	Obol of same types. "Transactions", p. 111, No. 4d. <i>Extremely fine and very rare.</i>	28 0 0
			1

1127	1211 0.98	Triobol. Similar <i>obv.</i> of slightly later style <i>Rev.</i> Lion's head l. in dotted square: all in incuse square. "Transactions", 9e. <i>Almost extremely fine and very rare.</i>	30 0 0
			1

*Note.*—The three coins above were all from the Samothrace Find.

1128	1212 7.87	Circ. B.C. 280. Attic Didrachm. Head of Athena r., helmet adorned with snake. <i>Rev.</i> ΣΑΜΟ. Cybele wearing modius, seated l. on throne, holding sceptre and patera; beneath throne, lion l.; in field to l., moneyer's name, ΜΗΤΡΩΝΑ. B.M.C. 1. <i>Very fine and rare.</i>	66 0 0
			1

∴ *Ex Naville X (1925), Lot 478.*

### Thasos

1129	1213 9.71	Circ. B.C. 550-463. Stater. Naked ithyphallic satyr r., kneeling on one knee, holding a struggling nymph clad in long chiton. Early archaic style, the hair indicated by dots. <i>Rev.</i> Quadripartite incuse square of mill-sail pattern. <i>Very fine.</i>	36 0 0
			1

∴ *Ex Pozzi 1108.*

1130	1214 9.87	Another, of varying style and the <i>rev.</i> incuse of differing form. <i>Very fine.</i>	48 0 0
			1

∴ *Ex Bement 850.*

1131	1215 9.98	Type larger and <i>rev.</i> as first coin. <i>Fine.</i>	1 13 0 0
------	--------------	---	----------

1132	1216 8.98	Similar but a die variant and of coarser fabric. <i>Has been mounted on the edge and possibly gilded.</i>	26 0 0
			1

1133	5521 9.58	Similar, the type unusually large and of splendid bold and vigorous style, the satyr shown horse-footed. <i>Very fine and attractive.</i>	62 0 0
			1

∴ *Ex Lord Grantley Collection (not noted in Sylloge).*

Lot Syl. No.  
No. & Wt.

22 0 0 1134 1217  
8.71 B.C. 463-411. Similar but of later style, the hair indicated by lines; beneath type, ☉. *Very fine and a very rare variety.* 1

15 0 0 1135 1218  
8.66 Another, without the letter. *Fine.* 1

*Note.*—The late Mr. Leonard Forrer wrote on the back of his ticket for this coin: "Note the similarity of the head of the satyr to that of Pan on the coins of Panticapaeum."

56 0 0 1136 1219  
8.77 Of still later style, the nymph seemingly willing to be carried off; in field to r., Φ. B.M.C. 29 variety. *Very fine, attractive style and a very rare variety.* 1

∴ *Ex Bement 855.*

54 0 0 1137 1220  
8.79 Similar style but the satyr's face and beard varied; also two tiny protuberances from his forehead like horns (perhaps a die-flaw); behind nymph, a dolphin, downwards. *Very fine and a very rare variety.* 1

∴ *Ex Naville V (1923), Lot 1556.*

33 0 0 1138 1221  
3.81 Drachm. Circ. B.C. 550-463. Similar types, of early archaic style, to foregoing Staters. *A very fine wide-spread piece.* 1

∴ *Ex Naville V (1923), Lot 1551.*

6 10 0 1139 1222  
4.07 Similar but from different dies. *Fine.* 1

∴ *Ex Ratta (Lugano) 4: iv: 1927, Lot 865.*

25 0 0 1140 1223  
3.57 Circ. B.C. 463-411. Later style, the satyr in an unusual position with the legs almost frontal. *Excellent style and very fine, a nice little piece.* 1

∴ *Ex Naville V (1923), Lot 1557.*

15 0 0 1141 1224  
0.51 Obol. Circ. B.C. 550-463. Two dolphins in opposite directions, r. and l.; around, three pellets (two only visible). B.M.C. 18. *Very fine.* 1

∴ *Ex Pozzi 1116 (not noted in Sylloge).*

<i>Lot</i>	<i>Syl. No.</i>	<i>No. &amp; Wt.</i>				
1142	1225 15.07	Circ. B.C. 411-350. Rhodian Tetradrachm. Head of Dionysos, l., bearded, wearing wreath of ivy leaves and berries. <i>Rev.</i> ☉ΑΣΙΩΝ. Heracles, bearded, clothed in lion-skin girdled at the waist, kneeling r. on r. knee, with l. foot advanced, drawing bow; in field r., swastika: the whole in linear square contained in circular incuse. B.M.C. 36-8 variety. <i>Very fine (some corrosion-pitting and scratches), fine style and extremely rare. An important piece.</i>	760	0	0	1
		<i>Ex G. Locker-Lampson Collection (Robinson, Cat. 138).</i>				
1143	1226 7.13	Didrachm of same types, with ME (in monogram) under arm of Heracles and symbol in r. field, a flaming torch: the linear square not visible. <i>From the Thasos Find, see see West, Num. Chron. 1934, p. 247, No. 32 (Pl. V). Very fine and extremely rare.</i>	70	0	0	1
1144	1227 6.16	Another, of coarser style and the <i>obv.</i> type to r. <i>Rev.</i> ΣΩ (in monogram) in r. field. West No. 47, Thasos Find. <i>Extremely fine and extremely rare.</i>	42	0	0	1
1145	1228 4.06	Drachm of similar type. <i>Obv.</i> to l. <i>Rev.</i> Above knee, a lizard to l. <i>Extremely fine, very pleasing style and rare.</i>	54	0	0	1
		<i>Ex Bement 858.</i>				
1146	1229 3.81	Another, similar, of particularly charming style. <i>Rev.</i> Symbol to r., palmette. <i>Extremely fine, with a smooth black oxidisation, rare.</i>	40	0	0	1
		<i>Ex Bement 860.</i>				
1147	1230 3.65	Another, similar, with symbol a lyre. <i>Almost very fine.</i>	1	16	0	0
		<i>Ex Pozzi 1122.</i>				
1148	1231 3.43	A/ Drachm. Head of youthful Dionysos to r., wearing ivy-wreath with berries over forehead, the hair long, falling down back of neck; on the neck and lower part of cheek, countermark bunch of grapes in circular indent. <i>Rev.</i> ☉ΑΣΙΩΝ. Herakles, bearded, clothed in lion-skin girdled at the waist, kneeling r., on r. knee, with l. foot advanced, drawing bow; in field to r., ΣΩ in monogram: the whole in linear square. <i>Very fine, a most interesting and unique piece.</i>	560	0	0	1

*Note.*—Dr. Robinson states in the Sylloge: "This unique and unpublished gold drachm must be contemporary with the cruder varieties of the preceding didrachms and drachms, cf. Syl. No. 1227."

<i>Lot</i>		<i>Syl. No.</i>			
<i>No.</i>	<i>&amp; Wt.</i>				
5	0 0	1149	1232 1.70	After Circ. B.C. 280. Hemidrachm. Head of bearded Dionysos to r., wearing wreath of ivy with berries. <i>Rev.</i> ⬤ΑΣΙΩΝ and club to r. in wreath. <i>Fine.</i>	1
				∴ <i>Ex Pozzi</i> 1125.	
28	0 0	1150	1233 1.70	Diobol. Two satyrs' heads of Janiform type. <i>Rev.</i> ⬤ΑΣΙ. Two amphorae, one inverted. <i>Extremely fine and a very rare little piece.</i>	1
				∴ <i>Ex Cahn (Frankfurt)</i> 27: ii: 1933, <i>Lot</i> 125.	
4	0 0	1151	1234 0.25	Circ. B.C. 411-350. Trihemiobol. Satyr, head turned nearly facing, with horse's tail, running r., holding kantharos. <i>Rev.</i> ⬤ΑΣΙΩΝ. Amphora. B.M.C. 58. <i>Very fine.</i>	1
				∴ <i>Ex Ratto Sale</i> 1927, <i>Lot</i> 852 ( <i>not noted in Sylloge</i> ).	
3	0 0	1152	1235 0.82	Another, type to l. and head to l., satyr holds amphora. <i>Fine and a very rare variety.</i>	1
				∴ <i>Ex Hutton Collection.</i>	
7	10 0	1153	1236 0.81	Another. Type to l., satyr holds kantharos. <i>Very fine.</i>	1
				∴ <i>Ex Bement</i> 864.	
10	0 0	1154	1237 0.82	Another. The satyr kneels three-quarters l. on l. knee, with l. hand on hip, he holds kantharos. <i>Extremely fine and a rare variety.</i>	1
				∴ <i>Ex Ratto Sale</i> 1927, <i>Lot</i> 881.	
<i>Note.</i> —Re Sylloge numbers 1234, 5, 6 and 7, the pedigrees in the Sylloge have been mixed up—they are as stated now.					
4	0 0	1155	1238 0.51	Obol. Head of satyr to r. <i>Rev.</i> ⬤ΑΣΙ around two dolphins, one to l., the other to r. <i>Fine and a rare little piece.</i>	1
10	10 0	1156	1239 0.27	Hemiobol. Head of nymph to l. <i>Rev.</i> ⬤Α and dolphin to l. <i>Fine and rare.</i>	1
				∴ <i>Ex Ars Classica XII</i> (1926), <i>Lot</i> 1241.	
16	0 0	1157	1240 16.96	After circ. B.C. 146. Tetradrachm. Head of young Dionysos r. wearing band across forehead, and ivy-wreath. <i>Rev.</i> ΗΡΑΚΛΕΟΥΣ ΣΩΤΗΡΟΣ ⬤ΑΣΙΩΝ. Herakles, naked, standing facing, head to l., with club and lion-skin; in field to l., M. <i>Extremely fine and much finer style than usual.</i>	1
				∴ <i>Ex Pozzi</i> 1126.	

<i>Lot No.</i>	<i>Syl. No.</i>	<i>No. &amp; Wt.</i>			
1158	1241 16.89	Another, from same <i>obv.</i> die; different <i>rev.</i> die. <i>Very fine.</i>	1	9	0 0
1159	1242 16.86	Another, from different dies and monogram for MH. <i>Very fine.</i>	1	12	0 0

## THRACIAN KINGDOM

## Lysimachus. B.C. 323-281

1160	1243 8.53	Gold Stater of Alexander type. Head of Athena to r., wearing crested Corinthian helmet adorned with serpent. <i>Rev.</i> ΒΑΣΙΛΕΩΣ Σ  ΛΥΣΙΜΑΧΟΥ. Nike walking l., with wreath and stylis; on l., forepart of lion, monogram and bucranium. Müller —. <i>Extremely fine and extremely rare.</i>	1	190	0 0
		∴ <i>Ex Naville Sale IV (1922), Lot 517 (not noted in Sylloge).</i>			
1161	1244 16.77	Tetradrachm of Alexander type. Head of Herakles r., wearing lion-skin: border of dots. <i>Rev.</i> ΒΑΣΙΛΕΩΣ ΛΥΣΙΜΑΧΟΥ. Zeus, seated l. on throne, holding eagle and sceptre; on l., monogram in wreath and forepart of lion; beneath, Σ. Müller 3. <i>Very fine and rare.</i>	1	28	0 0
		∴ <i>Ex Pozzi 1158.</i>			
1162	1245 4.06	Drachm of same types. <i>Rev.</i> To l., forepart of lion l. and above it, forepart of winged horse l. <i>Very fine (a little corrosion-pitting on rev. and edge) and scarce.</i>	1	3	10 0
		∴ <i>Ex Ratto (Lugano) 4: iv: 1927, Lot 973.</i>			
1163	1246 4.24	Another, with forepart of lion and Φ; beneath throne, pentagram. <i>Very fine and scarce.</i>	1	3	10 0
		∴ <i>Ex Naville V (1923), Lot 1690.</i>			
1164	1247 8.59	Gold Stater of Lysimachus' own types. Head of deified Alexander the Great to r., diademed, with horn of Ammon. <i>Rev.</i> ΒΑΣΙΛΕΩΣ ΛΥΣΙΜΑΧΟΥ. Athena Nikephoros l., with spear and shield decorated with star, seated on throne: in field to l., monogram; in ex., K; on throne, Π. <i>Ex Salonika Find 1919 (not noted in Sylloge). Extremely fine and of good style, a nice piece.</i>	1	60	0 0
1165	1248 17.12	Tetradrachm of same types; the <i>obv.</i> with border of dots; die-break behind head. <i>Rev.</i> Lion's head on shield; to l., monogram; in ex., meander-pattern. <i>Very fine and a very rare variety.</i>	1	13	10 0



Lot Syl. No.  
No. & Wt.

- 1173 <sup>1256</sup> Another. Head of Apollo r., laur. (copied from the gold  
<sup>12.61</sup> Stater of Philip II of Macedon). *Rev.* Similar, the foot-  
man without shield or spear; in field to l., amphora. *Very fine.* 18 0 0  
1  
∴ *Ex Pozzi* 987.
- 1174 <sup>1257</sup> Drachm. Head of Apollo (?), diademed, to r. *Rev.* 18 0 0  
<sup>3.98</sup> ΛΑΤΡΑΟΥ. Forepart of running boar to r.; beneath,  
monogram sideways. *Widespread and extremely fine.* 1  
∴ *Ex Bement* 798.
- 1175 <sup>1258</sup> Another. The *obv.* with features of Patraus: border of  
<sup>2.27</sup> dots. *Rev.* Eagle standing to r. B.M.C. 17 variety,  
without monogram. *Fine and rare.* 7 0 0  
1  
∴ *Ex Pozzi* 993.

**Audoleon.** B.C. 315-286

- 1176 <sup>1259</sup> Tetradrachm. Head of Athena threequarter-face l.,  
<sup>12.51</sup> wearing triple-crested Athenian helmet. *Rev.* ΑΥΔΟ-  
ΛΕΟΝΤΟΣ. Horse pacing r., with trailing rein; beneath,  
caduceus, upright; border of dots. B.M.C. 3. *Very fine*  
*and better style than usual.* 27 0 0  
1  
∴ *Ex Pozzi* 994.
- 1177 <sup>1260</sup> Another. The head turned towards r.; border of dots.  
<sup>12.57</sup> *Rev.* No rein; beneath horse, monogram. B.M.C. 4.  
*Extremely fine.* 29 0 0  
1  
∴ *Ex Pozzi* 995.
- 1178 <sup>1261</sup> Drachm of similar types. Head slightly towards l. *Rev.* 5 10 0  
<sup>3.97</sup> No rein; in front of horse, M with pellet above. *Very*  
*fine.* 1  
∴ *Ex Pozzi* 996.
- 1179 <sup>1262</sup> Another. Head towards r. *Rev.* Horse with trailing rein;  
<sup>3.97</sup> no symbol. *Very fine.* 5 10 0  
1  
∴ *Ex Glendining* 9: iii: 1931, *Nordheim Collection.*

Lot Syl. No.  
No. & Wt.

## THRACIAN RULERS

## Mosses. Circ. B.C. 500-480

- 27 0 0 1180 <sup>1263</sup><sub>8.41</sub> Drachm. Youth in petasos and chlamys, with two spears, leading horse to r.; on l., above, helmet. *Rev.* ΜΟΣΣΕΩ in incuse frame containing small quadripartite square. *Very fine and very rare.* 1

∴ *Ex Weber 1850.*

## Sparadocus. Circ. B.C. 424

- 8 0 0 1181 <sup>1264</sup><sub>1.21</sub> Diobol. ΣΗΑ. Forepart of horse to l.; border of dots. *Rev.* Eagle, with serpent in beak, flying to l.; all in incuse square. *Almost very fine and rare.* 1

- 7 10 0 1182 <sup>1265</sup><sub>1.26</sub> Another, from larger dies and of different, flatter style; A (?) or perhaps a die flaw, beneath horse. *Very fine and rare.* 1

## Scostoces. Circ. B.C. 300

- 44 0 0 1183 <sup>3522</sup><sub>16.74</sub> Tetradrachm. Head of Alexander the Great r., diademed, with horn of Ammon; border of dots. *Rev.* ΣΚΟΣΤΟΚΟΥ (in ex.). Type copied from Lysimachus and with his name and title in addition; lion's mask on shield; in field to l., ithyphallic term. *Very fine, full and better style than usual, rare.* 1

∴ *Ex Lord Grantley Collection (not noted in Sylloge).*

## THRACO-MACEDONIAN DISTRICT

## The Bisaltae. Circ. B.C. 500-480

- 160 0 0 1184 <sup>1266</sup><sub>27.73</sub> Octodrachm. Youth, wearing kausia, carrying two spears leading horse to r.; border of dots. *Rev.* Quadripartite incuse square. B.M.C. 1 variety. Bab. Pl. 47, 1. *Very fine and extremely rare.* 1

∴ *Ex Naville (1925), Lot 389.*

Lot Syl. No.  
No. & Wt.

1185	1267 2.39	Tetrobol (?). Same types but somewhat differing style. <i>Very fine and rare.</i>	21 0 0	1
1186	1268 2.36	Tetrobol (?). Horseman in cloak and kausia, with two spears, riding to r. <i>Rev.</i> Shallow quadripartite incuse square. <i>Very fine.</i>	16 10 0	1
		∴ <i>Ex Bement 679; P. Mathey Collection (where attributed to Alexander I).</i>		
1187	1269 2.39	Another, similar, but the rider's body naked (not noted in Sylloge) and he is more youthful. <i>Very fine.</i>	11 10 0	1
		∴ <i>Ex Pozzi 700.</i>		

### The Edoni or Edones

1188	3524 2.9.67	King Getas, circ. B.C. 500-480, Octodrachm. Naked herdsman r., guiding two oxen; in front, cockle-shell: border of dots. <i>Rev.</i> ΓΕΤΑΣ ΒΑΣΙΛΕΥΣ ΗΔΩΝΕΩΝ around a wheel with four spokes; all in shallow incuse square. cf. <i>Traité XLV 1455/7. Extremely fine for the coin and extremely rare; possibly a unique variety.</i>	20 0 0	1
		∴ <i>Ex Woodward Coll., purchased after the publication of his catalogue.</i>		

SPECIAL NOTE.—Since this coin was published in Part V of the Sylloge (No. 3524), some students (including the present cataloguer) have expressed doubts as to its authenticity, and think it possibly an extremely clever modern forgery. Therefore, the coin must be sold entirely on its merits and on the judgment of the purchaser at the time of sale, without the right to return it afterwards.

### The Derrones

1189	1270 28.46	Circ. B.C. 520. Octodrachm (?). ΔΕΡΟΝΙΚΟ[N]? Yoke of oxen l., with pole; triple ex. line, two plain enclosing one dotted: border of dots. <i>Rev.</i> Quadripartite incuse square with heavy excrescences in the quarters. cf. Babelon <i>Traité</i> , Part 2, 1445, and Jameson 943. <i>Very fine and excessively rare.</i>	58 0 0	1
------	---------------	--	--------	---



<i>Lot No.</i>	<i>Syl. No. &amp; Wt.</i>			
1197	<sup>1278</sup> <sup>4.48</sup>	Drachm. Similar type; in front of bull, olive-spray? (not noted in Sylloge). <i>Rev.</i> Wheel, with curiously arranged spokes, in incuse square. cf. Gaebler p. 65, 9, Ichnae? <i>Extremely fine and very rare.</i>	58	0 0
		∴ <i>Ex Naville 1934, Lot 329 (not noted in Sylloge).</i>		1
1198	<sup>1279</sup> <sup>1.11</sup>	Trihemiobol. Similar, without symbol. <i>Rev.</i> Wheel with four spokes. B.M.C. 20 var. Gaebler p. 65, 7 (Pl. XIV, 15). <i>Very fine and rare.</i>	21	0 0
		∴ <i>Ex Bement 635; P. Mathey Collection.</i>		1

### Uncertain Thraco-Macedonian

1199	<sup>3526</sup> <sup>2.12</sup>	Euboic-Attic Hemidrachm. B.C. 500-450. Forepart of bridled horse to r. <i>Rev.</i> Ram kneeling to r. on one knee, with head turned back: all in shallow circular incuse. <i>Extremely fine except for ram's flank being weakly struck and extremely rare.</i>	27	0 0
		∴ <i>Ex Weber 2328 and Naville 1928, Lot 598 (neither noted in Sylloge). Formerly and wrongly attributed to Maronea.</i>		1

## MACEDONIA

### Acanthus

1200	<sup>1280</sup> <sup>17.02</sup>	Circ. B.C. 530 (?) to 480. Euboic-Attic Tetradrachm. Lion l., attacking bull r. with head looking back; triple ex. line, the centre one dotted; in ex., stylized blossom (rose?): border of dots. <i>Rev.</i> Quartered incuse square of swastika form. Dr. Jules Desneux, "Les Tetradrachmes d'Akanthos", No. 12a, Pl. VI (this coin). <i>Extremely fine and an extremely rare early piece.</i>	160	0 0
		∴ <i>Ex Münzhandlung Basel I: X: 1935, Lot 595.</i>		1
1201	<sup>1281</sup> <sup>18.79</sup>	Another. The lion r., the bull l. with head turned back; the style somewhat later and on larger, flatter flan. <i>Rev.</i> The square regular, with the surface of the quarterings granulated. Desneux 46a, Pl. IX (this coin). <i>Extremely fine and rare.</i>	92	0 0
		∴ <i>Ex Pozzi 720.</i>		1

			<i>Lot</i>	<i>Syl. No.</i>	<i>No. &amp; Wt.</i>			
85	0	0	1202	1282 1.28	Another, similar; above the lion, Θ; the bull's tail (dotted) passes through the border. Desneux 78a (this coin). <i>A very fine piece, on wide flan and rare.</i>	1		
350	0	0	1203	1283 16.89	Another. The lion to r., the bull to l., with head uplifted; above bull's head, A (for place-name); the whole of most unusual style for the period. <i>Rev.</i> The granulations in high relief; traces of overstriking, with evidence of an earlier quartered square. Desneux 90a, Pl. XIV (this coin). <i>A magnificent specimen of this excessively rare variety of which Desneux only records this piece and Gaebler does not record at all.</i>	1		
				1284	Withdrawn.			
100	0	0	1204	1285 16.57	Another, the lion r.; the bull l., kneeling on l. fore-knee, nose almost on ground, hindquarters raised; in ex., on l. and r. of floral ornament, a pellet. <i>Rev.</i> Similar to preceding. Desneux 24a, Pl. VII and XXIV (this coin and the only one recorded). <i>Very fine and an extremely rare variety.</i>	1		
5	10	0	1205	1286 2.01	Hemidrachm. Forepart of lioness r.; above, stylized floral ornament: border of dots. <i>Rev.</i> Incuse square quartered by thin bands, the surface granulated. Gaebler p. 24, 13; Pl. VI, 24. <i>Very fine for the coin (some corrosion-pitting) and rare.</i>	1		
					<i>Ex Pozzi 727.</i>			
5	0	0	1206	1287 1.36	Another, of differing style; above the lioness, a large pellet; in ex., uncertain object. Gaebler p. 24, 12; Pl. VI, 22. <i>Almost very fine and rare.</i>	1		
					<i>Ex Pozzi 726.</i>			
28	0	0	1207	1288 3.64	Hemidrachm. Forepart of kneeling bull to l., with head turned back: border of dots. <i>Rev.</i> Quadripartite incuse square with granulated surface. cf. Gaebler p. 28, 33-35. <i>A magnificent specimen and rare so.</i>	1		
8	10	0	1208	1289 2.26	Another. Above the bull, fish to l. <i>Rev.</i> The centres of the quarterings raised. Gaebler —. <i>Very fine and a very rare variety.</i>	1		
					<i>Ex Weber 1882.</i>			

Lot Syl. No.  
No. & Wt.

- 1209    1290    Quarter Drachm (?). Head of Athena to r., wearing    8 10 0  
         1.36    crested Athenian helmet. *Rev.* Quadripartite incuse  
         square, the surface granulated. B.M.C. 15. Bab. I, 1720.  
         Gaebler p. 25, 19; Pl. VI, 25. *Very fine and rare.* 1

∴ *Ex Pozzi 728.*

- 1210    1291    Hemiobol. Bull's head r.: border of dots. *Rev.* Similar.    18 0 0  
         0.32    Gaebler p. 26, 27 (Pl. VI, 9). *Very fine and a very rare*  
         *little piece.* 1

∴ *Ex Weber 1886 (not noted in Sylloge).*

NOTE.—*Re Sylloge numbers 1288, 1289, 1290 and 1291, Dr. Robinson suggests that their attribution to Acanthus may be doubtful.*

- 1211    1292    After B.C. 424 to 380 (?). Tetradrachm of Phoenician    210 0 0  
         14.23    standard. Lion r., attacking bull l. on one knee with  
         head forced upwards and hindquarters raised; single ex.  
         line; beneath, vine-spray with leaf and fruit: border of  
         dots. *Rev.* AKAN●ION framing quartered incuse  
         square with granulated surface. Gaebler —; Desneux  
         116a (this coin), Pl. XVII and XXXIV. *Extremely fine*  
         *and an excessively rare variety, the only one recorded*  
         *by Desneux (see also note on page 30).* 1

∴ *Ex Empedocles Collection.*

- 1212    1293    Similar, but style differs and types larger; in ex., IIO.    125 0 0  
         14.12    and above the bull, II in minute form; die-flaws over  
         bull's hind legs. *Rev.* The quarterings in granulated  
         pyramid form. Desneux 121b (this coin). *Very fine and*  
         *rare.* 1

∴ *Ex R. Allatini Collection.*

- 1213    1294    The bull's head turned back and nearly facing; in ex.,    21 0 0  
         12.61    ONOMASITO in minute letters. *Rev.* Similar. Desneux  
         161a (this coin), Pl. XX, the only specimen recorded.  
         *Very fine, but unfortunately has been "touched up" in*  
         *several places in modern times; an excessively rare*  
         *variety.* 1

∴ *Ex Pozzi 730 and Ars Classica XIII (1928), Lot 431.*

Lot Syl. No.  
No. & Wt.

### Aegae

- 230 0 0 1214 <sup>1205</sup><sub>8.62</sub> B.C. 500-480. Stater. Goat r., on one knee, head reverted; above, rosette with central pellet (solar symbol?); two pellets on goat's flank; ex. line and border, dotted on a raised band. *Rev.* Quartered incuse square with granulated surface. Gaebler p. 18, 4; Pl. V, 24. *Very fine and very rare.* 1

∴ *Ex Bement 624; Paul Mathey Collection.*

- 4 0 0 1215 <sup>1206</sup><sub>1.11</sub> Trihemiobol (?). Similar types; above goat, circle enclosing pellet. Gaebler p. 20, 14; Pl. V, 30. *Very fine.* 1

∴ *Ex Pozzi 695.*

- 14 0 0 1216 <sup>1207</sup><sub>0.93</sub> Another, of perhaps slightly later style; above and on r., a pellet. Gaebler p. 19, 10. *Extremely fine and sharp.* 1

∴ *Ex Ars Classica XIII (1928), Lot 416.*

### Aenea

- 32 0 0 1217 <sup>1208</sup><sub>2.24</sub> B.C. 424-350. Hemidrachm (?). Head of Aeneas, bearded, to l., wearing crested Corinthian helmet; border of dots. *Rev.* AINEAS framing quartered incuse square. Gaebler p. 21, 5; Pl. V, 37. *Very fine for the coin and very rare.* 1

∴ *Ex Weber 1963 and Bement, Lot 668.*

### Amphipolis

- 3,200 0 0 1218 <sup>1209</sup><sub>11.28</sub> B.C. 424-358. Tetradrachm. Head of Apollo three-quarter face towards l., laureate; border of dots. *Rev.* AMΦΙΠΟΛΙΤΕΩΝ written around a raised frame, within which, a flaming race-torch. Gaebler p. 30, 2; Pl. VIII, 2. *Extremely fine (the reverse a little double-struck), extremely rare, a beautiful and very desirable piece.* 1

∴ *Ex Feuardent (Paris) 17: xii: 1921, Lot 30; Engel-Gros Collection.*

- 1,100 0 0 1219 <sup>1200</sup><sub>14.15</sub> Another, the head towards r. and of differing style. *Rev.* AMΦΙΠΟΛΙΤΕΩΝ; to l. of torch-handle, Boeotian shield. Regling, Z. f. N., 33, No. 57, note (15?). *Extremely fine for the coin, charming style, and extremely rare.* 1

<i>Lot</i>	<i>Syl. No.</i>	<i>No. &amp; Wt.</i>			
1220	1301 2.60	Drachm of similar types, reading ΑΜΦΙΠΟΛΙΤΕΩΝ and without symbol. cf. Gaebler p. 31, 10; Pl. VIII, 11. <i>Very fine and very rare.</i>	56	0	0
		∴ <i>Ex Bement 672.</i>			1
1221	1302 2.44	Tetrobol (?). Similar head, towards l. <i>Rev.</i> ΑΜΦΙ and flaming race-torch in laurel-wreath. Gaebler p. 32, 12 (Pl. VIII, 14). <i>Charming style, very fine and very rare.</i>	70	0	0
		∴ <i>Ex Bement 673.</i>			1
<b>Bottiaea</b>					
1222	1303 1.64	B.C. 185-168. Triobol, struck under Philip V of Macedon. Macedonian shield charged with pentasceles (solar symbol). <i>Rev.</i> ΒΟΤΤΕΑΤΩΝ inscribed in stern of galley. B.M.C. 64/1. <i>Very fine.</i>	3	0	0
		∴ <i>Ex Pozzi 1008.</i>			1
<b>Chalcidian League</b>					
1223	1304 2.44	B.C. 392-358. Tetrobol. Head of Apollo r., laur.: border of dots. <i>Rev.</i> ΧΑΛΚΙΔΕΩΝ around lyre; all in incuse square. Gaebler p. 82, 15; Pl. XVII, 22. Robinson and Clement, Excavations at Olynthus: IX. No. 17a. <i>Very fine and widespread.</i>	14	10	0
		∴ <i>Ex Pozzi 755.</i>			1
1224	1305 1.98	Another. Type to l.; behind, Δ. <i>Rev.</i> Type smaller with linear square inside incuse square. R. and C., No. 30 (b). <i>Very fine, charming style, and a rare variety.</i>	15	10	0
		∴ <i>Ex Pozzi 756.</i>			1
1225	1306 14.22	Tetradrachm. Head of Apollo r., laur., with short hair. <i>Rev.</i> ΧΑΛΚΙΔΕΩΝ around lyre; all in incuse square. R. and C., No. 8 (b). <i>Very fine and rare.</i>	78	0	0
		∴ <i>Ex Sotheby 7: vii: 1921, Lot 224; Fcuarent 17: xii: 1919, Lot 180; M. Collignon Collection.</i>			1
1226	1307 14.29	Another, from different dies; border of dots on <i>obv.</i> R. and C., No. 24 (b). <i>Very fine, widespread (small circular countermark (?) in front of face) and rare.</i>	82	0	0
		∴ <i>Ex Ratto (Milan) 13: v: 1912, Lot 599; Provadalieff Collection.</i>			1



<i>Lot</i>	<i>Syl. No.</i>			
<i>No.</i>	<i>&amp; Wt.</i>			
1234	1315 14.33	The hair shorter, with curls hanging at back, the relief very high. <i>Rev.</i> Beneath, ΕΠΙΕΥΔΩΠΙΔΑ. R. and C., No. 137 (b). <i>A magnificent piece, in mint condition except for a very little corrosion on the reverse, and rare.</i>	80	0 0
			1	
		∴ <i>Ex Empedocles Collection.</i>		

### Dicaea

1235	1316 2.29	B.C. 500-450. Tetrobol. Cow to r., about to scratch herself: border of dots. <i>Rev.</i> Windmill incuse. B.M.C. 1. Bab. Pl. 51, 3. cf. Gaebler p. 58, 3; Pl. XIII, 18. <i>Fine and a rare little piece.</i>	8	0 0
			1	
		∴ <i>Ex Ars Classica XIII (1928), Lot 448.</i>		
1236	1317 2.53	Tetrobol. Cock standing to r.; in front, traces of inscription. <i>Rev.</i> Cuttlefish in incuse square. B.M.C. —; Bab. Pl. 51, 4. <i>Very fine for the coin and very rare.</i>	52	0 0
			1	
		∴ <i>Ex Bement 667 and Hirsch XXV (1909), Philipsen Collection, No. 364.</i>		

### Eion

1237	1318 1.00	B.C. 500-437. Trihemionbol. Goose r., standing on one leg, with head reverted, on decorated base; beneath tail, pellet enclosed in circle; above, lizard. <i>Rev.</i> Quartered incuse square of swastika pattern. B.M.C. 72/2 variety; Gaebler p. 140, 37; Pl. XXVII, 18. <i>Very fine and a rare variety.</i>	6	0 0
			1	
		∴ <i>Ex Pozzi 680 (not 681 as stated in Sylloge).</i>		
1238	1319 0.89	Another, the goose with both feet on ground; beneath, on r., H; above, larger lizard to l.: border of dots. B.M.C. 74/14. Gaebler 140, 38 var., Pl. XXVII, 19 var. <i>Very fine and widespread.</i>	6	10 0
			1	
		∴ <i>Ex Bement 616.</i>		
1239	1320 0.84	Another, similar, but the H under the tail. B.M.C. 74/11. <i>Fine.</i>	3	10 0
			1	
		∴ <i>Ex Ratto (Lugano) 4: iv: 1927, Lot 460.</i>		

Lot Syl. No.  
No. & Wt.

### Heraclea (Sintica)

11 10 0 1240 <sup>1321</sup><sub>1.73</sub> Fifth Century B.C. Attic Triobol (?). Head of bearded Herakles r., wearing lion's skin. *Rev.* ΗΡΑΚΛΕΙΑ framing quartered incuse square. *Very fine and very scarce.*

1

∴ *Ex Bement 678.*

— — 1241 <sup>3523</sup> No Lot (same coin as S. 1321).

### Ichnae

82 0 0 1242 <sup>1322</sup><sub>9.24</sub> B.C. 500-480. Stater. Helmeted and cuirassed warrior to r., holding prancing horse; above, and below, a pellet: border of dots. *Rev.* Wheel with curiously arranged spokes. B.M.C. —. cf. p. 76/1; Bab. 49, 12. Gaebler p. 65, No. 11, Pl. XIV, 8. *Very fine (with a covering of smooth corrosion) and extremely rare*

1

∴ *Ex Weber 1846 and Bement 626 (neither noted in Syll.).*

### Lete

44 0 0 1243 <sup>1323</sup><sub>9.45</sub> Before B.C. 500. Stater. Naked ithyphallic satyr with horse's feet, r., seizing by the wrist a nymph with head turned towards him, she is clad in sleeveless chiton; around, three pellets. *Rev.* Rough incuse square diagonally divided. Gaebler p. 67, 4; Pl. XIV, 19. *A very fine early piece of lumpy fabric and rare.*

1

∴ *Ex Sotheby 1: xii: 1924, Lot 40.*

35 0 0 1244 <sup>1324</sup><sub>9.27</sub> Another, of wider fabric, satyr has horse's tail which he holds in his r.; the nymph raises her r. and holds wreath low down in l.; between the figures, a pellet. B.M.C. 8; Bab. 1, 1562; Gaebler p. 68, 9; Pl. XIV, 24. *Very fine and rare.*

1

∴ *Ex Pozzi 687.*

<i>Lot</i>	<i>Syl. No.</i>			
<i>No.</i>	<i>&amp; Wt.</i>			
1245	<sup>1325</sup> 9.72	Similar, but of different style. Satyr with horse's ears and feet, he grasps r. wrist of nymph, who raises her l.; in field, two large pellets. <i>Rev.</i> The diagonals double, forming four separate triangles in the incuse square. B.M.C. 6 variety. Gaebler p. 69, 14 sequ. <i>Very fine and a rare rev. variety.</i>	23	0 0
		∴ <i>Ex Weber</i> 1830.	1	
1246	<sup>1326</sup> 9.92	Another, very similar, but from different dies, and without the pellets. <i>Rev.</i> A square-shaped flat in the centre. B.M.C. 6. Gaebler p. 69, 14 sequ. <i>In mint condition, but the satyr's face somewhat blurred in striking and his r. leg off the flan.</i>	21	0 0
		∴ <i>Ex Pozzi</i> 690.	1	
1247	<sup>1327</sup> 9.73	Another, the <i>obv.</i> from same die but now showing a pellet behind the satyr. <i>Rev.</i> Without the flat in the centre. <i>Same condition and the same slight blemishes.</i>	22	0 0
		∴ <i>Ex Taranto Hoard</i> 1912.	1	
1248	<sup>1328</sup> 0.82	Trihemiolbol. Naked satyr, with horse's feet and tail, kneeling r. on one knee, sinistra mansuu veretrum tenet. <i>Rev.</i> Quartered incuse square. B.M.C. 29. <i>Extremely fine except for four minute drill marks.</i>	7	0 0
		∴ <i>Ex Bement</i> 622.	1	
1249	<sup>1329</sup> 1.11	Another, showing the satyr to have horse's ears, in addition to feet and tail. <i>Very fine, widespread and complete.</i>	14	10 0
		∴ <i>Ex Bement</i> 623.	1	
1250	<sup>1330</sup> 1.11	Another, from larger <i>obv.</i> die. <i>Very fine.</i>	1	3 10 0
1251	<sup>1331</sup> 1.02	Satyr squatting on his haunches to r.; in field to r., pellet in rosette of dots? <i>Rev.</i> The square divided triangularly. <i>Extremely fine.</i>	6	10 0
			1	
1252	<sup>1332</sup> 0.96	Another, of later style, with pellet each side of head. B.M.C. 26 sequ. Gaebler p. 71, 25. <i>Very fine but partially pierced.</i>	2	0 0
		∴ <i>Ex Bement</i> 621.	1	

Lot Syl. No.  
No. & Wt.

- 10 10 0 1253 <sup>1333</sup><sub>1.13</sub> A third, of thick lumpy fabric and early style; three pellets in field. *Rev.* Rough irregular incuse. Gaebler p. 71, 22 sequ.; Pl. XV, 3. *Very fine and a rare variety.* 1  
*Ex Bement 620.*
- Mende**
- 60 0 0 1254 <sup>1334</sup><sub>16.74</sub> Before B.C. 450. Tetradrachm, *obv.* ithyphallic ass to left with crow standing on rump, *rev.* incuse square of deep triangles. *Very fine and extremely rare, not in Noe, Mende (Chaliandra) Hoard, N. N. & M., No. 27.* 1  
*Ex Taranto Hoard.*
- 350 0 0 1255 <sup>1335</sup><sub>17.00</sub> Tetradrachm, *obv.* [NO]IAΔIM, ass with crow, to right, braying, no ground line, *rev.* square of five compartments. *Extremely fine and extremely rare, not in Noe.* 1
- 66 0 0 1256 <sup>1336</sup><sub>16.82</sub> Tetradrachm, similar, *obv.* ass to left, MIN reversed on left. cf. Noe, No. 1. *A little off-centre, fine and extremely rare.* 1
- 100 0 0 1257 <sup>1337</sup><sub>17.09</sub> Tetradrachm, similar, *obv.* ass to right, floral ornament below, MINΔ AION reversed. Noe No. 8. *Very fine and extremely rare.* 1  
*Ex Ars Classica XII (1926), Lot 1125.*
- 68 0 0 1258 <sup>1338</sup><sub>15.94</sub> Tetradrachm, similar, *obv.* on right, downward and reversed, MINΔAION, crow with head raised. *Not in Noe, fine and extremely rare.* 1  
*Ex Pozzi, Lot 770, and Naville 1923, Lot 1317.*
- 82 0 0 1259 <sup>1339</sup><sub>16.58</sub> Tetradrachm, similar, *obv.* ass to right, M on rump as brand-mark, MINΔ on right, AION above and reversed. cf. Noe 27. *Fine and extremely rare.* 1  
*Ex W. H. Woodward Collection (1924), Lot 43.*
- 72 0 0 1260 <sup>1340</sup><sub>13.48</sub> Tetradrachm, *plated, obv.* vine-stock with leaves and bunch of grapes behind ass, MI N to right and below. cf. Noe No. 19, note. *Fine and a very rare type.* 1  
*Ex Empedocles Collection.*

Lot Syl. No.  
No. & Wt.

- |  |               |  |         |   |
|--|---------------|--|---------|---|
| 1261   | 1340<br>17.01 | Tetradrachm, similar, but without crow on ass's back, <i>obv.</i> MINΔAION reversed, around. Noe No. 18. <i>Fine and very rare.</i>  | 40 0 0  | 1 |
| ∴ <i>Ex Ars Classica XVI (1933), Lot 993.</i>  |               |  |         |   |
| 1262   | 1341<br>16.65 | Tetradrachm, similar, <i>obv.</i> ass holds bunch of grapes in mouth, MINΔ— reversed, <i>rev.</i> saltire. Noe No. 17. <i>Fine and very rare.</i>  | 58 0 0  | 1 |
| ∴ <i>Ex E. G. Spencer Churchill Collection (1929), Lot 173.</i>                      |               |  |         |   |
| 1263   | 1342<br>2.55  | Hemiobol, same period, <i>obv.</i> ass to right, four-pointed star below, <i>rev.</i> pattern of five incuse triangles. B.M.C. unpbd. <i>Very fine and rare.</i>   | 29 0 0  | 1 |
| ∴ <i>Ex Theodore Prowe Collection (1912) and Hamburger Sale (June 1930), Lot 10.</i> |               |  |         |   |
| 1264   | 1343<br>1.85  | Hemiobol, similar, but ass to right braying, floral spiral on right. <i>Fine and rare.</i>   | 11 10 0 | 1 |
| ∴ <i>Ex Pozzi Collection (Lot 777).</i>  |               |  |         |   |
| 1265   | 1344<br>17.33 | B.C. 450-424. Tetradrachm, <i>obv.</i> Dionysus holding cantharus reclining on ass to right, walking satyr holding thyrsus in front, <i>rev.</i> vine-stock, with leaves and bunches of grapes, in square frame, MENΔAION around. Noe No. 46. <i>Fine and very rare.</i> | 105 0 0 | 1 |
| ∴ <i>Ex Pozzi Collection (Lot 787).</i>  |               |  |         |   |
| 1266   | 1345<br>17.09 | Tetradrachm, similar, but Dionysus holds ivy spray in left hand and in front, crow standing on vine. Noe No. 47. <i>Very fine and well struck, very rare.</i>  | 120 0 0 | 1 |
| 1267   | 1346<br>17.08 | Tetradrachm, similar, crow standing on large vine to right. Noe No. 57. <i>Very fine and very rare.</i>  | 100 0 0 | 1 |
| 1268   | 1347<br>17.27 | Tetradrachm, similar, but head of Dionysus facing, bearded and wearing wreath, vine-stock between legs of ass. Noe No. 61. <i>A little double-struck on obverse, but extremely fine and of great rarity.</i>   | 340 0 0 | 1 |
| ∴ <i>Ex Chaliandra Find and Locker-Lampson Collection (No. 147).</i>                 |               |  |         |   |



Lot Syl. No.  
No. & Wt.

- 1277 1360 Stater, similar, *obv.* apparently no inscription. *A little* 160 0 0  
9.19 *double-struck, otherwise extremely fine and sharp, very*  
*rare.* 1

∴ *Ex Duruflé (Paris 1910) and Bement (Lot 610) Collections.*

- 1278 1361 Trihemionbol (?), *obv.* bull to right, OPH (?) above, 7 0 0  
0.89 *rev.* quartered incuse square. *Fine and scarce.* 1

∴ *Ex Pozzi Collection (Lot 672).*

### Orthagoria

- 1279 1362 Circa B.C. 350. Stater, *obv.* head of Artemis to right, 17 0 0  
10.64 *quiver at shoulder, rev.* Macedonian helmet, mono.  
below, star above, OP●ΑΓΟΡΕΩΝ at sides. Gaebler  
Pl. XVIII, 21, 22. *Very fine and rare.* 1

- 1280 1363 Quarter-Stater, *obv.* head of Artemis three-quarters left, 30 0 0  
2.66 *quiver left, rev.* similar to last, without mono. Gaebler  
Pl. XVIII, 23. *Very fine and rare.* 1

∴ *Ex Bement Collection (Lot 630).*

### Philippi

- 1281 1364 358-340 B.C. Drachm (3.11 gms.), *obv.* head of Heracles 12 0 0  
1365 *right, rev.* tripod with fillets, wreath above, torch right,  
*fine;* Hemidrachm (1.61 gms.), similar, *rev.* dolphin to  
*right, very fine.* 2

∴ *First coin ex Pozzi Collection (Lot 812).*

### Potidaea

- 1282 1366 Circa B.C. 500-429. Stater, *obv.* Poseidon holding tri- 32 0 0  
16.97 *dent, to right on horseback, rev.* incuse square quartered  
diagonally. *Heavily die-flawed, otherwise fine and very*  
*rare.* 1

∴ *Ex Ratto Sale 4th April 1927 (Lot 499).*

- 1283 1367 Stater, *obv.* Poseidon holding trident, to left on horse- 68 0 0  
16.92 *back, inscription above, dolphin between horse's legs,*  
*rev.* incuse square quartered diagonally. *Finer style than*  
*last, very fine and very rare.* 1

∴ *Ex Naville X (1925), Lot 418.*



Lot Syl. No.  
No. & Wt.

### Uncertain Macedonian

1291	1377 17.30	Circa B.C. 550. Tetradrachm (or Stater), <i>obv.</i> quadriga to right, driver holds whip with two tails, large pellet above, <i>rev.</i> eagle in square frame, in incuse square quartered diagonally. <i>Very fine and very rare.</i>	525	0	0
		∴ <i>Mr. Robinson in Sylloge says: "Types, weight and fabric point towards a city of Chalcidice soon after the middle of the Sixth Century."</i>			
		∴ <i>Ex Montagu (198), Weber (1900), Bement (Lot 643), F. G. Spencer-Churchill and Naville 1933 (Lot 976) Collections.</i>			

1

END OF FIRST DAY'S SALE

Lot Syl. No.  
No. & Wt.

Second Day's Sale  
Thursday, February 13th 1958

Commencing at 1 p.m. precisely

MACEDONIAN KINGS

Alexander I (B.C. 498-454)

62	0	0	1292	1378 18.19	Tetradrachm, <i>obv.</i> horseman with two spears, to left, <i>rev.</i> head of goat right, caduceus behind. B.M.C. 158/1. <i>Very fine and very rare.</i>	1
					Ex Rhousopoulos, G. Philippson, Hirsch XXV (1909) and Bement (Lot 681) Collections.	
8	0	0	1293	1379 1.81	Tetrobol, <i>obv.</i> horse walking right, <i>rev.</i> quartered incuse square. B.M.C. 9. <i>Very fine and scarce.</i>	1
					Ex Pozzi (Lot 818) Collection.	
60	0	0	1294	1380 28.64	Octodrachm, <i>obv.</i> warrior with two spears, walking beside horse to right, <i>rev.</i> ΑΛΕΞΑΝΔΡΟ framing quartered incuse square with granulated surface. B.M.C. 1. <i>Very fine and very rare.</i>	1
					Ex Empedocles and Pozzi (Lot 815) Collections.	
16	0	0	1295	1381 3.70	Octobol, similar to last, except for smaller module. B.M.C. p. 157/4. <i>Fine and scarce.</i>	1
					Ex Naville Sale (1923), Lot 1336.	
13	10	0	1296	1382 2.20	Tetrobol, <i>obv.</i> horseman carrying two spears, to right, <i>rev.</i> forepart of lion to right, in square, inscription around. B.M.C. p. 161/23. <i>Very fine and scarce.</i>	1
					Ex Bement Collection (Lot 682).	
64	0	0	1297	1383 12.71	Tetradrachm, <i>obv.</i> horseman carrying two spears, to right, <i>rev.</i> forepart of goat to right, within incuse square. B.M.C. p. 159/2. <i>Very fine and very rare.</i>	1
					Ex Pozzi Collection (Lot 821).	

Lot Syl. No.  
No. & Wt.

- |      |              |  |        |
|------|--------------|--|--------|
| 1298 | 1384<br>2.00 | Tetrobol, <i>obv.</i> horse to right, <i>rev.</i> caduceus in, and forming part of. quartered square. B.M.C. p. 48/12. <i>Fine and rare.</i> | 4 10 0 |
|------|--------------|--|--------|

1

∴ *Ex Naville Sale* (1928), *Lot* 457.

- |      |              |   |       |
|------|--------------|---|-------|
| 1299 | 1385<br>1.93 | Tetrobols (2). Alexander I or Perdiccas II (wts. 2.00 and 1.93 gms.), <i>obv.</i> horse standing right, <i>rev.</i> helmet in square, B.M.C. p. 159/5; <i>obv.</i> horse galloping right, <i>rev.</i> similar. <i>Both fine and scarce.</i> | 9 0 0 |
|------|--------------|---|-------|

2

∴ *Ex Naville Sale* (1923), *Lot* 1338, and *Naville Sale* (1928), *Lot* 456.

#### Perdiccas II (B.C. 454-443)

- |      |              |  |        |
|------|--------------|--|--------|
| 1300 | 1387<br>2.52 | Tetrobol, <i>obv.</i> horseman to right, plant beneath horse, <i>rev.</i> forepart of lion right, II above. B.M.C. 21 var. <i>Fine and scarce.</i> | 4 10 0 |
|------|--------------|--|--------|

1

∴ *Ex Ratto* (4th April 1927), *Lot* 514.

- |      |              |   |        |
|------|--------------|---|--------|
| 1301 | 1388<br>2.86 | Tetrobol, <i>obv.</i> horseman galloping right, <i>rev.</i> forepart of lion right, caduceus above. B.M.C. 29. <i>Very fine and rare.</i> | 17 0 0 |
|------|--------------|---|--------|

1

∴ *Ex Basel Sale* (1st October 1935), *Lot* 615.

#### Archelaus I (B.C. 413-399)

- |      |              |   |         |
|------|--------------|---|---------|
| 1302 | 1389<br>9.35 | Didrachm, <i>obv.</i> horseman with two spears galloping left, <i>rev.</i> APXEΛAO, round forepart of goat to right, look-back. B.M.C. 2. <i>Very fine and very rare.</i> | 145 0 0 |
|------|--------------|---|---------|

1

∴ *Ex Empedocles Collection.*

- |      |              |   |        |
|------|--------------|---|--------|
| 1303 | 1390<br>1.86 | Tetrobol, <i>obv.</i> horse galloping left, <i>rev.</i> APXEΛAO, crested helmet in incuse square. B.M.C. p. 164/7. <i>Very fine and scarce.</i> | 14 0 0 |
|------|--------------|---|--------|

1

∴ *Ex Naville V* (1923), *Lot* 1340.

Lot Syl. No.  
No. & Wt.

- 26 0 0 1304 <sup>1391</sup> Didrachm, *obv.* young diademed head right, *rev.*  
<sup>9.66</sup> APXE|Λ|AO, horse with trailing rein to right. B.M.C.  
p. 164/3. *Very fine and rare.* 1  
∴ *Ex Bement Collection (Lot 683).*
- 26 0 0 1305 <sup>1392</sup> Didrachm, similar, style somewhat bolder. *Fine and*  
<sup>10.02</sup> *rare.* 1  
∴ *Ex Sir H. Weber and Bement (Lot 684) Collections.*
- 15 10 0 1306 <sup>1393</sup> Obol (0.96 gms.), *obv.* head of Heracles, bearded, to  
<sup>1394</sup> right, *rev.* forepart of wolf right, devouring prey, traces  
of inscription, B.M.C. p. 165/10, *fine and rare, ex Basel*  
*Sale (1st October 1935), Lot 616; Hemiobol (0.32 gms.),*  
*obv.* head of Heracles, beardless, to right, *rev.* lion's  
head to left, |A| P, B.M.C. 12, *very fine and rare, ex*  
*Naville (July 1933). Lot 1009.* 2

#### Amyntas II (B.C. 392-390)

- 36 0 0 1307 <sup>1395</sup> Didrachm, *obv.* youthful diademed head to right, *rev.*  
<sup>9.27</sup> AMYNTA, horse walking right. B.M.C. p. 168/1. *Fine*  
*and very rare.* 1  
∴ *Ex Pozzi Collection (Lot 831).*

#### Pausanias (B.C. 390-389)

- 26 0 0 1308 <sup>1396</sup> Didrachm, *obv.* beardless head to right, *rev.* ΠΑΥΣΑΝ,  
<sup>9.47</sup> IA reversed, horse with long bridle to right. B.M.C. —.  
*Fine and very rare.* 1  
∴ *Ex Naville V (1923), Lot 1344.*
- 16 0 0 1309 <sup>1397</sup> Didrachm (plated), *obv.* as last, *rev.* similar, horse with-  
<sup>7.85</sup> out bridle. B.M.C. p. 170/2. *Somewhat corroded, but*  
*fine and very rare.* 1  
∴ *Ex Naville V (1923), Lot 1343.*

Lot Syl. No.  
No. & Wt.

### Amyntas III (B.C. 381-369)

- 1310 1398 Didrachm, *obv.* bearded Heracles head right, *rev.* 17 0 0  
7.16 AMYNTA, horse standing right, all in square. B.M.C.  
p. 171/2. *Fine and scarce.* 1  
∴ *Ex Pozzi Collection (Lot 832).*

- 1311 1399 Didrachm, *obv.* cloaked horseman thrusting downwards 70 0 0  
9.99 with spear, *rev.* [A]MYNTA, lion to left, gnawing spear.  
B.M.C. 173/16. *Fine and very rare.* 1  
∴ *Ex Sir H. Weber and Bement (Lot 687) Collections.*

### Philip II (B.C. 359-336)

(*Ref. M. = Müller (L.): Numismatique d'Alexandre le Grand*)

- 1312 1400 A Stater, *obv.* Apollo, head right, *rev.* biga right, 46 0 0  
8.6 ΦΙΛΙΠΠΟY in exergue, symbol trident. *Extremely fine*  
*and widespread.* 1
- 1313 1401 A Stater, similar, *rev.* symbol corn-grain. *Very fine,* 38 0 0  
8.6 *rare.* 1
- 1314 1402 A Stater, similar, *obv.* flower (?) behind neck, *rev.* 48 0 0  
8.6 symbol thunderbolt. *Dent on chin, otherwise extremely*  
*fine, rare.* 1
- 1315 1403 A Stater, similar, *rev.* symbol a spear head, trace of 46 0 0  
8.5 letter (?) to right. *Very fine and of fine style, rare.* 1
- 1316 1404 A Stater, similar, *rev.* symbol Boeotian shield, a snake 42 0 0  
8.6 (?) above rider's whip. *Extremely fine and rare.* 1
- 1317 1405 A Stater, similar, *rev.* symbol a trident. *An early* 28 0 0  
8.6 *debasement of good style, very fine.* 1
- 1318 1406 A Stater, similar, *rev.* monogram and thunderbolt, 30 0 0  
8.15 corn-ear (?) in exergue, barbarous style. *Fine.* 1
- 1319 1407 A Half-Stater (Drachm), *obv.* head of Heracles right, 115 0 0  
4.3 *rev.* forepart of lion right, ΦΙΛΙΠΠΟY above, thunder-  
bolt below. *Very fine and extremely rare.* 1  
∴ *Ex Hermitage Collection, Berlin (November 1935), Lot*  
*626.*

				<i>Lot No.</i>	<i>Syl. No. &amp; Wt.</i>		
17	0	0	1320	1408 2.12	A Quarter-Stater (Hemidrachm), <i>obv.</i> similar, <i>rev.</i> strung bow and club, cantharus above, ΦΙΛΙΠΠΙΟΥ in exergue. M. 109, Mende. <i>Fine and rare.</i>	1	
Ex <i>Ars Classica</i> XII (1926), Lot 1145.							
26	0	0	1321	1409 1.05	A Trihemiobol, <i>obv.</i> similar, <i>rev.</i> trident, ΦΙΛΙΠΠΙΟΥ to left, lion's head on right. M. 167, Cardia. <i>Very fine and very rare.</i>	1	
Ex <i>Ars Classica</i> XVII (1934), Lot 353, and Pozzi (Lot 846) Collections.							
22	0	0	1322	1410	A Obol, <i>obv.</i> Apollo head, <i>rev.</i> ΦΙΛΙΠΠΙΟΥ, thunderbolt above, lion's head below. M. 168, Cardia. <i>Very fine and very rare.</i>	1	
Ex: <i>Provenance as last lot.</i>							
250	0	0	1323	3527 14.29	Tetradrachm, <i>obv.</i> head of Zeus to left, <i>rev.</i> racehorse to right, with boy rider wearing taenia and holding palm branch, ΦΙΛΙΠΠΙΟΥ on right and below, symbol a bee. <i>Extremely fine, of fine style and very rare.</i>	1	
Ex <i>W. H. Woodward Collection</i> , 145a.							
40	0	0	1324	1411 14.47	Tetradrachm, similar, <i>obv.</i> head of Zeus to right, <i>rev.</i> horseman left, rider wears cloak and hat, right hand raised, legend above, symbols bow and club. <i>Extremely fine and good style, rare.</i>	1	
14	0	0	1325	1412 14.18	Tetradrachm, similar, <i>rev.</i> horseman right, carrying palm branch, symbol a grasshopper. <i>Fine.</i>	1	
25	0	0	1326	1413 14.69	Tetradrachm, similar, <i>rev.</i> symbol thunderbolt, N in exergue (Pella?). <i>Fine, head in high relief.</i>	1	
5	0	0	1327	1414 14.24	Tetradrachm, similar, <i>rev.</i> a snake below horse, Boeotian shield in exergue. cf. Lot 1316. <i>A deep chisel-cut on reverse, otherwise fine.</i>	1	
15	0	0	1328	1415 14.40	Tetradrachm, similar, <i>rev.</i> symbol Janus head in polos (Amphipolis?). <i>Fine.</i>	1	
8	10	0	1329	1416	Tetrobol, <i>obv.</i> young diademed head right, <i>rev.</i> horseman cantering right, fulmen below. <i>Fine and of unusually good style.</i>	1	

Lot No.	Syl. No. & Wt.			
1330	1417 1418	Tetrobol (2.50 gms.), similar, <i>rev.</i> symbol star, <i>fine</i> ; another (2.96 gms.), similar, <i>rev.</i> symbol corn-ear, <i>very fine</i> , <i>ex Bement Collection</i> .	8 0 0	2
1331	1419 1420	Tetrobol (2.38 gms.), <i>obv.</i> portrait (?) head right, <i>rev.</i> similar to last, club below, ΦΙΛΙΠΠΙΟΥ above, <i>extremely fine</i> ; another (2.40 gms.), similar style and symbol, <i>rev.</i> without inscription (or off flan), <i>very fine</i> , <i>both illustrated</i> . Mr. Robinson says of these two coins: "They are posthumous and probably were struck on the Adriatic coast a good deal later."	7 10 0	2

### Alexander the Great (B.C. 336-323)

#### Earliest Issue

1332	1421 1422	Diobol (1.39 gms.), Heracles in lion-skin right, <i>rev.</i> two eagles facing, <i>about fine and rare</i> ; Quarter-Obol (?) (0.26 gms.), <i>obv.</i> similar, <i>rev.</i> ΑΛΕΞΑΝ between club and bow and quiver, <i>fine and rare</i> , <i>ex Pozzi Collection</i> (Lot 944).	11 10 0	2
------	--------------	--	---------	---

#### Later Contemporary and Posthumous Issues

1333	1423 17.15	Α Distater, head of Athena right, snake on bowl of helmet, <i>rev.</i> Nike standing to left holding wreath and naval standard, symbol trident, mint of Pella. M. 104. <i>Very fine and very rare</i> .	100 0 0	1
1334	1424 8.5	Α Stater, similar, <i>rev.</i> symbol thunderbolt, mint of Pella. M. 2. <i>Fine and rare</i> .	23 0 0	1
1335	1425 8.55	Α Stater, <i>obv.</i> head of Athena right, lion-griffon on helmet, <i>rev.</i> Nike standing left, on right ethnic and date in Phoenician, Ακ and 23 (=323 B.C.), mint of Ace-Ptolemais. M. 1452 var. <i>In mint state and very rare</i> .	58 0 0	1
1336	1426 8.5	Α Stater, similar, <i>rev.</i> date incomplete, mint of Ace-Ptolemais. <i>Very fine and very rare</i> .	30 0 0	1
1337	1427 8.55	Α Stater, snake on helmet, <i>rev.</i> ΒΑΣΙΛΕΩΣ to left, ΜΙ to left, monogram in wreath to right. M. 731. Mint of Babylon. <i>Almost very fine and rare</i> .	28 0 0	1

			Lot No.	Syl. No. & Wt.			
44	0	0	1338	1428 8.6	A' Stater, sphinx on helmet, <i>rev.</i> below, monogram to left, M to right. M. cf. 689. <i>Extremely fine and very rare.</i>	1	
36	0	0	1339	1429 8.6	A' Stater, snake on helmet, <i>rev.</i> ant and star to left. <i>Very fine and rare.</i>	1	
40	0	0	1340	1430 8.6	A' Stater, snake on helmet, <i>rev.</i> monogram to left. <i>Extremely fine and rare.</i>	1	
32	0	0	1341	1431 8.6	A' Stater, similar, <i>rev.</i> monogram, pentagram and cornucopia to left of Nike. M. 381. <i>Very fine and rare.</i>	1	
50	0	0	1342	1432 8.6	A' Stater, similar, <i>rev.</i> ΒΑΣΙΛΕΩΣ on left, to left anchor, Λ and monogram. M. 1506—attributed to Seleucid Kings of Syria. <i>Fine and very rare.</i>	1	
70	0	0	1343	1433 4.3	A' Drachm, head of Athena right, snake on helmet, <i>rev.</i> as Staters, symbol griffin's head to left. M. 294—Abdera. <i>Very fine and very rare.</i>	1	
∴ <i>Ex Pozzi Collection (Lot 875).</i>							
20	0	0	1344	1434 1.85	A' Hemidrachm, similar, <i>rev.</i> strung bow and club, ΑΛΕΞΑΝ on left, ΔΡΟΥ divided by eagle on right. cf. M. 182—Aphytis. <i>Very fine and very rare.</i>	1	
∴ <i>Ex Pozzi Collection (Lot 878).</i>							
40	0	0	1345	1435 17.12	Tetradrachm, Heracles head to left, <i>rev.</i> Zeus seated on throne, holding eagle and sceptre, a bee in field. Mint of Pella. M. 507—Miletus. <i>Very fine and exceptionally rare.</i>	1	
∴ <i>From the Allatini and Bement (748) Collections.</i>							
19	0	0	1346	1436 17.15 17.20 17.24 17.19	Tetradrachms (4), weights 17.15, 17.20, 17.24, 17.19 gms., all of Pella mint, similar, but Heracles head to right, symbols helmet, cock, Phrygian helmet with cheek-pieces, figure of Pallas Promachus. <i>The last fine, others very fine.</i>	4	
13	10	0	1347	1437 17.11	Tetradrachms (2), weights 17.20, 17.11 gms., mint of Pella, • below throne, M. 197. <i>extremely fine, ex Pozzi (822); and symbol dolphin, fine.</i>	2	
12	0	0	1348	1438 17.16 16.92 17.07	Tetradrachms (3), weights 17.16, 16.92, 17.07 gms., all of mint of Amphipolis, similar, symbols a large crescent, Λ and torch with M and star under throne, Λ and torch with ΗΛ in monogram under throne. <i>All very fine.</i>	3	

Lot Syl. No.  
No. & Wt.

- |      |                    |  |         |   |
|------|--------------------|--|---------|---|
| 1349 | 1445<br>1446       | Tetradrachms (2), weights 17.13 and 17.19 gms., similar, symbol trident with A and pellet under throne, a Macedonian mint; ΒΑΣΙΛΕΩΣ in exergue, symbol a wreath with ΔΙ under throne, a Lycian or Pamphylian mint, <i>ex Pozzi Collection</i> (896). <i>Both very fine.</i>  | 8 10 0  | 2 |
| 1350 | 1447<br>17.22      | Tetradrachm, similar, symbol a plough, ☉ under throne. M. 1284. Mint of Tarsus. <i>Extremely fine and well centred.</i><br><i>Ex Pozzi Collection</i> (914).   | 22 0 0  | 1 |
| 1351 | S.—<br>17.15       | Tetradrachm, similar, mint of Tarsus, <i>obv.</i> Β under head, <i>rev.</i> Victory flying holding wreath, and Β and caduceus to left, mono. under throne. M. unpbd., Newell XXI/4, No. 57. <i>A very fine full coin, extremely rare.</i><br><i>Ex Sir Ronald Storrs Collection.</i>   | 19 0 0  | 1 |
| 1352 | 1448<br>to<br>1450 | Tetradrachms (3), weights 17.19, 17.20, 17.24 gms., similar, symbol Nike with wreath, a monogram under throne and Σ in exergue, M. 198 var., mint of Tarsus, <i>very fine</i> ; symbol a strung bow, mint of Salamis in Cyprus; a monogram left, M below throne, M. 1065 var., mint of Myriandrus, <i>the last two fine.</i> | 13 10 0 | 3 |
| 1353 | 1451<br>17.22      | Tetradrachm, similar, symbol the forepart of a ram, ΔΑ below throne and Λ (?) between bars of throne. M. 1338. Mint of Damascus. <i>In choice condition.</i><br><i>Ex Allatini and Bement (Lot 741) Collections.</i>   | 18 10 0 | 1 |
| 1354 | 1452<br>17.18      | Tetradrachm, similar, <i>rev.</i> mint-name and date in Phoenician, Ακ and 22 (=324 B.C.), mint of Ace-Ptolemais. M. 1430. <i>Very fine.</i><br><i>Ex Ratto Sale, 4th April 1927 (Lot 659).</i>  | 7 0 0   | 1 |
| 1355 | 1453<br>17.09      | Tetradrachm, similar, date 36 (=310 B.C.), mint of Ace-Ptolemais. M. 1458. <i>Very fine.</i>   | 7 0 0   | 1 |
| 1356 | 1454<br>17.11      | Tetradrachm, similar, <i>obv.</i> ΙΔΟΥ (?) in oval counter-mark on Heracles' cheek, <i>rev.</i> in field to left, an Α, or monogram of the three initials of Adramalek, King of Byblus. (Mr. Robinson in Sylloge, opps. Pt. XXVIII). <i>Very fine.</i>   | 4 10 0  | 1 |

			<i>Lot</i>	<i>Syl. No.</i>	
			<i>No.</i>	<i>&amp; Wt.</i>	
11	0	0	1357	1455 to 1457	Tetradrachms (3), weights 17.18, 17.18 and 17.14 gms., similar, all of mint of Babylon, symbol bee with mono. and M under throne, <i>fine</i> ; M in field and AY under throne, M. 1272, <i>very fine</i> , <i>ex Pozzi</i> (913) <i>Collection</i> ; H in field, mono. in wreath under throne, <i>extremely fine</i> , <i>ex Ratto</i> 4: iv: 1927 (619) <i>Sale</i> .
					3
13	0	0	1358	1458 to 1460	Tetradrachms (2), weights 16.66 and 17.22 gms., both of Alexandria mint, symbol ram's head with plumes, ΔA in mono. under throne, <i>fine only</i> ; symbol a rose, ΔIO under throne, M. 124, <i>extremely fine</i> , <i>ex Pozzi</i> (881) <i>Collection</i> ; and a barbarous Tetradrachm (wt. 13.98 gms.), symbol a bull's head, IΦI under throne, fulmen (?) in exergue, <i>a chisel-cut on obverse</i> , <i>fine</i> .
					3

#### Later Posthumous Issues

4	10	0	1359	1461 16.91	Tetradrachm, similar types but later style, Mesembria, <i>rev.</i> ΒΑΣΙΛΕΩΣ to right, symbol a helmet, monogram under throne. <i>Extremely fine and scarce</i> .
					1
5	0	0	1360	1462 16.83	Tetradrachm, similar, Odessus, <i>rev.</i> mono. OΔH under throne, EYIIPO in exergue, struck at time of Mithradates the Great (B.C. 120-63). <i>Extremely fine and rare</i> .
					1
3	10	0	1361	1463 16.26	Tetradrachm, similar but cruder style, Odessus, <i>obv.</i> features of Mithradates the Great, punch-marks on face, <i>rev.</i> ΑΑΚΩ in field, OΔH in exergue. <i>Very fine and rare</i> .
					1
9	0	0	1362	1464 1465	Tetradrachms (2), weights 16.39 and 16.37 gms., both of Odessus, similar to last, <i>rev.</i> OE in field, mono. under throne, M. 420, <i>very fine</i> , <i>ex Pozzi</i> (756) <i>Collection</i> ; and another, similar, same symbols, <i>very fine</i> ; <i>both rare</i> .
					2
11	0	0	1363	1466 16.50	Tetradrachm, similar, Propontis, <i>rev.</i> Demeter with two torches on left, KEP under throne. M. 401. <i>Extremely fine and rare</i> .
					1
7	0	0	1364	1467 16.77	Tetradrachm, similar, Sicyon, <i>rev.</i> Athena with shield and spear to left, ΔE under throne, victories on uprights, cf. M. 878 var. <i>Obverse a little corroded, otherwise very fine and rare</i> .
					1

<i>Lot</i>	<i>Syl. No.</i>			
<i>No.</i>	<i>&amp; Wt.</i>			
1365	<sup>1468</sup> <sup>16.98</sup>	Tetradrachm, similar, Temnus, <i>rev.</i> mono. and E in field, amphora in wreath of vine-leaves and grapes to left. M. 956. <i>Very fine and a very full flan, rare.</i>	4 0 0	1
1366	<sup>1469</sup> <sup>16.56</sup>	Tetradrachm, similar, but exceptionally fine style, Mytilene, <i>rev.</i> mono. and lyre in field, ornamented back to throne. M. 975. <i>Extremely fine and toned, rare.</i>	18 10 0	1
1367	<sup>1470</sup> <sup>16.91</sup>	Tetradrachm, similar, but style of normal issue, <i>rev.</i> charging bull and mono. to left, mono. under throne, Magnesia on Maeander. <i>Very fine and rare.</i>	10 10 0	1
1368	<sup>1471</sup> <sup>17.04</sup>	Tetradrachm, similar, <i>rev.</i> horse's head and mono. left, meander pattern in exergue. M. 1071. Magnesia. <i>Very fine and a very rare variety.</i>	12 10 0	1
1369	<sup>1472</sup> <sup>16.60</sup>	Tetradrachm, similar, Alabanda, <i>rev.</i> pegasus to left, A below throne. M. 1144. <i>Extremely fine and a full round flan, rare.</i>	5 10 0	1
∴ <i>Ex Bement Collection (Lot 760).</i>				
1370	<sup>1473</sup> <sup>17.12</sup>	Tetradrachm, similar, <i>rev.</i> ΑΙΝΗΤΩΡ and large rose in field to left, PO under throne. M. 1160. <i>Extremely fine and well struck, rare.</i>	10 10 0	1
∴ <i>Ex Pozzi Collection (Lot 935).</i>				
1371	<sup>1474</sup> <sup>16.78</sup>	Tetradrachm, similar, <i>rev.</i> one-handed jug left. M. 952 —Temnus. <i>Extremely fine and rare.</i>	25 0 0	1
∴ <i>Ex Bement Collection (Lot 757).</i>				
1372	<sup>1475</sup> <sup>16.76</sup>	Tetradrachm, similar, <i>rev.</i> ornate tripod to left, B below throne. cf. M. 1151—Cnidus. <i>Extremely fine and rare.</i>	27 0 0	1
1373	<sup>1476</sup> <sup>17.26</sup>	Tetradrachm, similar, <i>rev.</i> lighthouse with letter below to left, A under throne. cf. M. 641 et seq. <i>Extremely fine and rare.</i>	10 10 0	1
∴ <i>Ex Earle (Philadelphia 1912) and Bement (749) Collections.</i>				
1374	S.— <sup>15.65</sup>	Tetradrachm, similar, <i>obv.</i> anchor in rectangular countermark, <i>rev.</i> ΑΣ KH (Aspendus) in field left, a sling under throne. <i>Fine and a very rare variety.</i>	7 10 0	1

				<i>Lot</i>	<i>Syl. No.</i>		
				<i>No.</i>	<i>&amp; Wt.</i>		
6	10	0	1375	1477		Didrachm. same types, <i>rev.</i> M in field left, mono. under throne. cf. M. 1317. Mint of Babylon. <i>Fine and very rare.</i>	1
<i>Ex Pozzi Collection (Lot 937).</i>							
11	0	0	1376	1478 1479 1480		Drachms (10), weights from 4.04 - 4.29 gms., same types, symbols forepart of lion and crescent, lion's head and Φ, Demeter with two torches, ΔΗ in mono., double axe under throne, torch, amphora, rose under throne, crescent, crescent under throne. <i>Mostly very fine or extremely fine.</i>	10
10	0	0	1377	1488 1497		Drachms (10), weights from 3.56 (plated) to 4.35 gms., similar, symbols bearded head, anchor, <i>fair only and plated</i> , cockle-shell, star and spear-head (2), fish and spear-head, corn-grain and spear-head, bee and spear-head, forepart of pegasus, and Artemis with torch, mono. and forepart of pegasus, <i>mostly very fine, some rare varieties.</i>	10
8	0	0	1378	1498 1500 1506		Drachms (9), weights from 4.03 to 4.34 gms., similar, symbols forepart of pegasus, lyre, bunch of grapes, mono. and foot-stool (?), B, ΚΙ, filleted racing-torch, M, uncertain. <i>Fine or very fine.</i>	9
5	10	0	1379	1507 1508 1510 1511		Hemidrachm (1.98 gms.), same types, <i>rev.</i> Σ to left, mono. under throne (Aradus), <i>fine, ex Pozzi (942)</i> ; Obols (3), weights .64, .61, .66 gms., same types, symbols anchor and mono. (Mesopotamia), <i>ex Pozzi (943)</i> , two monos., mono. and E, <i>all fine.</i>	4

### Philip III Aridaeus (B.C. 323-316)

32	0	0	1380	S.—		<i>A</i> Stater, <i>obv.</i> head of Athena right, <i>rev.</i> Nike standing, ΦΙΛΙΠΠΙΟΥ right, 'S' and mono. <i>Fine and very rare.</i>	1
42	0	0	1381	S.—		<i>A</i> Stater, similar, <i>rev.</i> ΒΑΣΙΛΕΥΣ added to left. ΑΥ—Μ (?) below. <i>Very fine and very rare.</i>	1
11	0	0	1382	17.14		Tetradrachm, Heracles' head, <i>rev.</i> Zeus on throne, ΒΑΣΙΛΕΥΣ ΦΙΛΙΠΠΙΟΥ, M in field left, B under throne. cf. M. 103. Mint of Babylon. <i>Very fine and rare.</i>	1

*Ex Pozzi Collection (Lot 950).*

Lot Syl. No.  
No. & Wt.

1383	1513 17.15	Tetradrachm, similar, <i>rev.</i> wheel and A to left, mono. under throne. cf. M. 26. Mint of Acanthus. <i>Extremely fine and rare.</i>	10 0 0	1
∴ <i>Ex Ars Classica XIII</i> (1928), Lot 534.				
1384	1514 17.06	Tetradrachm, similar, <i>rev.</i> mono. and grapes to left, I under throne. cf. M. 1525—Alexander, for mono. and symbol. <i>Almost very fine and rare.</i>	4 10 0	1
1385	1515 1516 1517 1500 (=3528)	Drachms (2), wts. 4.26 and 4.24 gms., similar, mono. under throne, mono. to left and star under throne; Hemidrachm, wt. 1.97 gms., similar, marks uncertain; Obol, wt. 0.57 gms., similar, anchor to left. <i>All about fine, the last two scarce.</i>	4 10 0	4

#### Demetrius Poliorcetes (B.C. 306-283)

1386	1518 16.88	Tetradrachm, Nike alighting on prow of ship, <i>rev.</i> ΒΑΣΙΛΕΩΣ ΔΗΜΗΤΡΙΟΥ, Poseidon to left with trident, two monos. in field, mint of Salamis. E. T. Newell, Demetrius Poliorcetes, No. 23. <i>Very fine and very rare.</i>	160 0 0	1
∴ <i>Ex Ionides and Locker-Lampson</i> (Lot 166) <i>Collections.</i>				
1387	1519 16.91	Tetradrachm, similar, <i>rev.</i> mono. in field to right, mint of Pella. Newell, No. 70. <i>Very fine and very rare.</i>	115 0 0	1
∴ <i>Ex Dolbeke, Roussel and Bement</i> (Lot 777) <i>Collections.</i>				
1388	1520 4.10	Drachm, similar types, <i>rev.</i> A and mono., mint of Tarsus. Newell, No. 44. <i>Fine and very rare.</i>	15 0 0	1
∴ <i>Ex Pozzi Collection</i> (Lot 957).				
1389	1521 2.98	Hemidrachm, similar types, <i>rev.</i> A and mono. as last. Newell, —. Mint of Tarsus. <i>Very fine and rare.</i>	24 0 0	1
∴ <i>Ex Pozzi Collection</i> (Lot 1460).				
1390	1522 17.18	Tetradrachm, head of Demetrius diademed with bull's horn to right, <i>rev.</i> Poseidon seated on rocks holding aphlaston and trident, ΒΑΣΙΛΕΩΣ ΔΗΜΗΤΡΙΟΥ, two monos., mint of Amphipolis. Newell, No. 104. <i>Extremely fine and very rare.</i>	58 0 0	1

Lot Syl. No.  
No. & Wt.

- 29 0 0 1391 1523 Tetradrachm, *obv.* similar, *rev.* Poseidon standing, one  
17.27 foot on rock, leaning on trident, two monos., mint of  
Amphipolis. Newell, No. 124. *Extremely fine and very  
rare.* 1

∴ *Ex Naville IV* (1922), *Lot* 471.

### Antigonus Gonatas (B.C. 306-301)

- 18 0 0 1392 1524 Tetradrachm, *obv.* Macedonian shield charged with  
17.10 horned head of Pan, throwing stick at shoulder, *rev.*  
Athena Alkis standing, ΒΑΣΙΛΕΩΣ ΑΝΤΙΓΟΝΟΥ,  
crested helmet to left, mono. right. *In mint state and  
rare.* 1

∴ *Ex Naville V* (1923), *Lot* 1465.

- 16 0 0 1393 1525 Tetradrachm, similar, *rev.* KT to right. *Very fine and  
17.10 rare.* 1

- 15 0 0 1394 1526 Drachm, *obv.* head of Zeus laureate to right, *rev.* similar  
3.38 to last, with TI on right. *Fine and very rare.* 1

- 27 0 0 1395 1527 Tetradrachm, *obv.* head of Poseidon wearing wreath of  
16.86 seaweed to right, *rev.* Apollo, holding strung bow, seated  
on prow inscribed ΒΑΣΙΛΕΩΣ ΑΝΤΙΓΟΝΟΥ, mono.  
below. *Except for cuts in edge, very fine and rare.* 1

### Philip V (B.C. 220-179)

- 170 0 0 1396 1528 Tetradrachm, *obv.* diademed head of Philip right, *rev.*  
16.97 Athena Alkis to left, ΒΑΣΙΛΕΩΣ ΦΙΛΙΠΠΟΥ, ΣΡ ΕΡ  
at sides. *Extremely fine and exceedingly rare.* 1

- 85 0 0 1397 1529 Tetradrachm, *obv.* Macedonian shield charged with head  
16.82 of Philip as Perseus, wearing winged cap of darkness  
with griffin crest, harp at shoulder, *rev.* club between  
ΒΑΣΙΛΕΩΣ ΦΙΛΙΠΠΟΥ, three monos. in field, all in  
oak-wreath. *Very fine and very rare.* 1

∴ *Ex Bement Collection* (786).

<i>Lot No.</i>	<i>Syl. No. &amp; Wt.</i>			
1398	<sup>1530</sup> <sup>8.40</sup>	Didrachm, diademed head of Philip right, <i>rev.</i> similar to last. <i>Fine and rare.</i>	1	16 0 0
		∴ <i>Ex Naville V</i> (1923), <i>Lot</i> 1469.		
1399	<sup>1531</sup> <sup>1532</sup>	Drachm, wt. 4.23 gms., and Hemidrachm, wt. 2.00 gms., both similar to last. <i>Very fine and fine.</i>	2	19 0 0
		∴ <i>Both ex Naville V</i> (1923), <i>Lots</i> 1470 and 1471.		

### Perseus (B.C. 178-168)

1400	<sup>1533</sup> <sup>16.89</sup>	Tetradrachm, <i>obv.</i> diademed head of Perseus right, <i>rev.</i> eagle on thunderbolt. ΒΑΣΙΛΕΩΣ ΠΕΡΣΕΩΣ, in oak-wreath. <i>Almost extremely fine, rare.</i>	1	90 0 0
------	-------------------------------------	---	---	--------

### Times of Philip V and Perseus

1401	<sup>1534</sup> <sup>1535</sup>	Tetrobol, wt. 2.29 gms., <i>obv.</i> Macedonian shield, <i>rev.</i> helmet with cheek pieces, <i>fine</i> ; Tetrobol, wt. 2.12 gms., <i>obv.</i> Maenad with wreath of vine-leaves and berries, <i>rev.</i> stern of galley, <i>very fine.</i>	2	4 0 0
------	------------------------------------	--	---	-------

### Macedonia under the Romans (B.C. 158-149)

1402	<sup>1536</sup> <sup>16.96</sup>	Tetradrachm, Macedonian shield charged with head of Artemis, <i>rev.</i> club between ΜΑΚΕΔΟΝΩΝ ΠΡΩΤΗΣ, three monos. in field, in oak-wreath. <i>About very fine.</i>	1	8 10 0
1403	<sup>1537</sup> <sup>16.87</sup>	Tetradrachm, a similar coin. <i>About very fine.</i>	1	8 10 0
1404	<sup>1538</sup> <sup>16.70</sup>	Tetradrachm, <i>obv.</i> similar to last two, <i>rev.</i> club between ΜΑΚΕΔΟΝΩΝ ΔΕΥΤΕΡΑΣ, monos. above and below, within oak-wreath. <i>Fine and of excessive rarity.</i>	1	23 0 0
1405	<sup>1539</sup> <sup>16.99</sup>	Tetradrachm, <i>obv.</i> Macedonian shield charged with six-limbed solar symbol, <i>rev.</i> club between ΜΑΚΕΔΟΝΩΝ ΑΜΦΑΞΙΩΝ, two monos. above, within oak-wreath. <i>Extremely fine and of the highest rarity.</i>	1	270 0 0

∴ *Ex Ars Classica XVI* (1933). *Lot* 1053.

Lot Syl. No.  
No. & Wt.

### Thalna ? (B.C. 149)

- 72 0 0 1406 <sup>1540</sup><sub>16.88</sub> Tetradrachm, *obv.* Macedonian shield charged with head of Artemis, *rev.* club between LEG MAKEΔONΩN, hand holding branch (badge of Praetor Thalna?). *Extremely fine and very rare.* 1

∴ *Ex Bcment Collection (Lot 806).*

### Philip Andriscus in Revolt (B.C. 149-148)

- 46 0 0 1407 <sup>1541</sup><sub>16.73</sub> Tetradrachm, *obv.* as Lot 1397, features of Andriscus, *rev.* short heavy club between ΒΑΣΙΛΕΩΣ ΦΙΛΙΠΠΟΥ, within oak-wreath. *Very fine and exceedingly rare.* 1

∴ *Ex Naville V (1923), Lot 1497.*

### Aesillas (B.C. 92-88)

- 18 0 0 1408 <sup>1542</sup><sub>16.79</sub> Tetradrachm, *obv.* head of Alexander the Great with ram's horn, B reversed behind, MAKEΔONΩN below, *rev.* club between Quaestor's chair and money chest, AESILLAS Q. *Extremely fine.* 1

∴ *Ex Pozzi Collection, Lot 1004.*

- 3 0 0 1409 <sup>1543</sup><sub>16.43</sub> Tetradrachm, similar, *obv.* • behind head. *Fair only.* 1

## THESSALY

### The Aenianes

- 19 10 0 1410 <sup>1544</sup><sub>7.39</sub> Didrachm, circa B.C. 168-146, head of Athena Parthenos right, behind, traces of letters (?), *rev.* slinger, behind, two spears, between ΑΙΝΑΙΝΩΝ ΞΕΝΟΤΙΜΟΥ, pegasus right. *Very fine and rare.* 1

∴ *Ex Pozzi Collection (Lot 1193).*

- 7 0 0 1411 <sup>1545</sup><sub>2.70</sub> Tetربول, circa B.C. 400-344, head of Zeus to left, *rev.* warrior hurling javelin, ΑΙΝΙΑΝΩΝ. *Fine style, very fine and scarce.* 1

∴ *Ex Naville V (1923), Lot 1720*

*Lot Syl. No.*  
*No. & Wt.*

1412 <sup>1516</sup> Tetrobol, circa B.C. 168-146, later style, similar types, 8 10 0  
<sup>2.40</sup> *obv.* |TO|ΛMAIOΣ to right. *Very fine and scarce.* 1

1413 <sup>1517</sup> Tetrobol, circa B.C. 168-146, head of Athena right, 5 0 0  
<sup>2.40</sup> ΔAIME above, *rev.* similar, palm to right. *Very fine and scarce.* 1

∴ *Ex Naville V* (1923), *Lot* 1724.

1414 <sup>1518</sup> Tetrobol, circa B.C. 168-146, similar, *obv.* pegasus on 6 10 0  
<sup>2.42</sup> helmet, uncertain legend behind. *Very fine and scarce.* 1

∴ *Ex Bement Collection* (*Lot* 905).

### Cierium

1415 <sup>1549</sup> Trihemiobol, circa B.C. 400-344, head of Zeus right, 10 10 0  
<sup>1.29</sup> *rev.* nymph Arne playing knuckle-bones, KIEPIEION, Φ to right. *Striking split, otherwise fine and very rare.* 1

∴ *Ex Pozzi Collection* (*Lot* 1197).

### Demetrias

1416 <sup>1550</sup> Ⲭ, circa B.C. 290, head of Artemis right, *rev.* prow 3 10 0  
<sup>2.46</sup> right, ΔHMHTRIEON, mono. left. B.M.C. 1. *Fine and rare.* 1

∴ *Ex Bement Collection* (*Lot* 907).

### Lamia of the Malians

1417 <sup>1551</sup> Hemidrachm, 2.70 gms., circa B.C. 400-344, beardless 7 10 0  
<sup>1553</sup> head of Dionysius left, *rev.* amphora, ivy-leaf above, MAΛIEON, oenochoe to right, B.M.C. 2, *very fine and scarce, illustrated, ex Naville V* (1923), *Lot* 1728; and a copper core, similar types (S. 1552); Obol, 0.85 gms., similar, B.M.C. 5, *fine, ex Pozzi, Lot* 1206. 3

### Larissa

1418 <sup>1554</sup> Obol, before B.C. 480, bull's head left, *rev.* horse's head 8 10 0  
<sup>1.04</sup> right in incuse square, ΛA. B.M.C. 3. *Very fine.* 1

∴ *Ex Pozzi Collection* (*Lot* 1207).

Lot Syl. No.  
No. & Wt.

5	0	0	1419	1553 1.05	Obol. before B.C. 480, types similar but reversed. B.M.C. 5. <i>Obv. off-centre, very fine.</i>	1
					<i>Ex Sir H. Weber and Naville XIII (1928), Lot 697, Collections.</i>	
16	0	0	1420	1556	Circa B.C. 480-430. Drachm, youth with chlamys and flying petasus, throwing bull right, horse galloping right, rein trailing, AA—RI (backwards), in incuse square. <i>Very fine and scarce.</i>	1
17	10	0	1421	1557 5.82	Drachm, similar, <i>rev.</i> AA RI (backwards). <i>Extremely fine and scarce.</i>	1
					<i>Ex Pozzi Collection (Lot 1208).</i>	
13	10	0	1422	1558 5.78	Drachm, similar, <i>rev.</i> horse to left, AA below, RI inverted above. <i>Very fine and scarce.</i>	1
					<i>Ex Bement Collection (Lot 911).</i>	
15	0	0	1423	1559 5.94	Drachm, similar, <i>obv.</i> bull to left, <i>rev.</i> horse to right, LA—RI (backwards). <i>Very fine and scarce.</i>	1
10	10	0	1424	1560 5.90	Circa B.C. 430-400. Drachm, <i>obv.</i> similar type, bull to right, <i>rev.</i> horse right, AAΠIΣA. <i>Very fine and scarce.</i>	1
					<i>Ex Pozzi Collection (Lot 1212).</i>	
19	10	0	1425	1561 5.12	Drachm, similar but both types to left, <i>rev.</i> AAΠIΣA—IA. <i>Very fine and scarce.</i>	1
					<i>Ex Münzhandlung Basel, 1st October 1935 (Lot 661).</i>	
17	0	0	1426	1562 5.91	Drachm, similar, types to right, <i>rev.</i> AAΠI—ΣAIA. <i>Very fine and of good style, scarce.</i>	1
16	10	0	1427	1563 5.85	Drachm, similar, <i>obv.</i> type to left. <i>Extremely fine and scarce.</i>	1
					<i>Ex Naville XII (1926), Lot 1281.</i>	
18	10	0	1428	1564 1565	Drachm, wt. 5.99 gms., similar, <i>very fine and scarce, illustrated, ex Basel Sale 23rd March 1937 (Lot 212);</i> and a Hemidrachm, wt. 2.94 gms., similar but <i>obv.</i> forepart of bull only, <i>fine.</i>	2

<i>Lot No.</i>	<i>Syl. No. &amp; Wt.</i>			
1429	1566 5.99	Circa B.C. 400-344, Drachm, bull running to right, $\Lambda\text{API}\Sigma\text{AI}\Omega\text{N}$ , <i>rev.</i> horseman in chlamys and petasus galloping right. B.M.C. 54. <i>Very fine and of fine style, rare.</i>	50 0 0	1
		<i>∴ Ex Münzhandlung Basel, 1st October 1935 (Lot 662).</i>		
1430	1567 6.13	Drachm, head of nymph Larisa in profile to right, <i>rev.</i> prancing horse with trailing rein, to right. B.M.C. 51. <i>Extremely fine and rare.</i>	15 0 0	1
		<i>∴ Ex Pozzi Collection (Lot 1217).</i>		
1431	1568 6.05	Drachm, similar but types to left. B.M.C. 50. <i>Very fine and rare.</i>	15 0 0	1
		<i>∴ Ex Naville V (1923), Lot 1742.</i>		
1432	1569 6.11	Drachm, similar, profile to left, horse to right. B.M.C. 47. <i>Extremely fine and nicely centred, rare.</i>	22 0 0	1
		<i>∴ Ex Bement Collection (Lot 914).</i>		
1433	1570 5.82	Drachm, nymph Larisa in profile right, <i>rev.</i> youth in chlamys and petasus about to mount horse to right. B.M.C. 52. $\Lambda\text{A}[\text{P}]\text{I}\Sigma\text{A}[\text{I}]\text{A}$ . <i>A little worn but very fine and rare.</i>	32 0 0	1
		<i>∴ Ex Ailatini and Bement (Lot 916) Collections.</i>		
1434	1571 11.68	Didrachm, head of nymph Larisa facing, hair flowing, <i>rev.</i> horse trotting right, with short rein, $\Lambda\text{API}$ above, $\Sigma\text{AI}\Omega\text{N}$ in exergue. B.M.C. 55. <i>Very fine and very rare.</i>	100 0 0	1
		<i>∴ Ex Pozzi Collection (Lot 1219).</i>		
1435	1572 6.08	Drachm, <i>obv.</i> similar, <i>rev.</i> youth in chlamys and petasus standing behind horse to right, $\Lambda\text{A}—\text{P}—\text{I}\Sigma\text{A}$ . <i>Fine and rare.</i>	21 0 0	1
		<i>∴ Ex Sir H. Weber (2853) and Ars Classica XVII (1934), Lot 437.</i>		
1436	1573 6.07	Drachm, <i>obv.</i> similar, <i>rev.</i> mare with foal to right, $\Lambda\text{API}$ in exergue, $\Sigma\text{AI}\Omega\text{N}$ above. B.M.C. 64. <i>Extremely fine and sharp, though obverse a little off-centre; said to be one of the finest known, rare.</i>	55 0 0	1
		<i>∴ Ex Alberto Sangorski Collection.</i>		



<i>Lot No.</i>	<i>Syl. No. &amp; Wt.</i>				
1447	1583 5.97	Drachm, a similar coin, <i>rev.</i> ground line dotted. <i>Very fine and nicely centred.</i>	1	17	0 0
. . . <i>Ex Alberto Sangorski Collection.</i>					
1448	1584 1585	Hemidrachm, wt. 2.26 gms., head of nymph three-quarters left, <i>rev.</i> horse right, mono. below, B.M.C. 67, <i>very fine, illustrated, ex Bement Collection (Lot 926);</i> Obol, wt. 0.66 gms., similar, <i>rev.</i> mono. omitted, <i>fine, ex Ars Classica XII (Lot 1292).</i>	2	37	0 0

### Magnetes

1449	1586 3.89	B.C. 197-146, Drachm, head of Zeus right, <i>rev.</i> Artemis holding bow, seated on prow, left, ΜΑΙΝΗΤΩΝ. B.M.C. 1 var. <i>Fine and scarce.</i>	1	6	10 0
. . . <i>Ex Pozzi Collection (Lot 1230).</i>					
1450	1587 4.25	Drachm, similar, <i>rev.</i> a star and dolphin to left. <i>Very fine and scarce.</i>	1	10	0 0
. . . <i>Ex Bement Collection (Lot 928).</i>					

### Oeta

1451	1588 7.62	B.C. 196-146, Didrachm, lion's head left, gnawing spear, <i>rev.</i> Hercules naked standing facing, crowned with ivy, holding club and lion-skin, ΟΙΤΑΙ—ΩΝ. Num. Chron. 1900, Pl. 13, 12. <i>Extremely fine and extremely rare.</i>	1	200	0 0
. . . <i>Ex Sir H. Weber and Naville X (Lot 528) Collections.</i>					
1452	1589 3.22	Hemidrachm, similar, <i>rev.</i> Hercules holds club in arms. B.M.C. 8. <i>Very fine.</i>	1	11	0 0
. . . <i>Ex Pozzi Collection (Lot 1234).</i>					

### Phalanna

1453	1590 5.16	B.C. 400-334, Drachm, young male head right, <i>rev.</i> horse with short rein right, inscription round. <i>Somewhat worn, but fine and rare.</i>	1	5	10 0
------	--------------	---	---	---	------

				<i>Lot</i>	<i>Syl. No.</i>			
				<i>No.</i>	<i>&amp; Wt.</i>			
23	0	0	1454	1591 2.81		Hemidrachm, types similar. <i>Very fine and very rare.</i>		1

∴ *Ex R. Allatini and Bement (Lot 931) Collections.*

### Pharcadon

4	0	0	1455	1592 2.82		B.C. 480-400, Hemidrachm, youth with chlamys and flying petasus throwing bull, forepart only, <i>rev.</i> forepart of horse right, Φ A P K AΔ. <i>Fine and scarce.</i>		1
---	---	---	------	--------------	--	--	--	---

∴ *Ex Pozzi Collection (Lot 1240).*

6	0	0	1456	1593 2.89		Hemidrachm, types similar. <i>Very fine and scarce.</i>		1
---	---	---	------	--------------	--	---	--	---

∴ *Ex Pozzi Collection (Lot 1239).*

### Pharsalus

15	0	0	1457	1594 2.83		B.C. 480-344, Hemidrachm, head of Athena right, <i>rev.</i> horse's head right, ΦAP. B.M.C. 1. <i>Fine and scarce.</i>		1
----	---	---	------	--------------	--	--	--	---

∴ *Ex Pozzi Collection (Lot 1242).*

21	0	0	1458	1595 3.02		Hemidrachm, a similar coin, Athena's helmet has three serpents. <i>Almost extremely fine and a rare variety.</i>		1
----	---	---	------	--------------	--	--	--	---

11	0	0	1459	1596 2.86		Hemidrachm, similar to Lot 1457. <i>rev.</i> reads ΦAPΣ. <i>Fine and scarce.</i>		1
----	---	---	------	--------------	--	--	--	---

∴ *Ex Pozzi Collection (Lot 1244).*

10	10	0	1460	1597 5.83		Circa B.C. 400-344, Drachm, head of Athena right, helmet decorated with Scylla, TH over MI behind, <i>rev.</i> horseman in petasus and chlamys to right, military flail at shoulder, inscription barely legible. B.M.C. 9 var. <i>Reverse off-centre but fine and rare.</i>		1
----	----	---	------	--------------	--	---	--	---

∴ *Ex Headlam, 1916 (Lot 402) and Bement (Lot 935) Collections.*

25	0	0	1461	1598 6.07		Drachm, <i>obv.</i> similar but with Boeotian shield countermark on cheek, <i>rev.</i> horseman to right, raising club with right hand, ΦAP Σ , TH (reversed) below horse. B.M.C. Pl. 14, 10. <i>Abrasion on obverse, otherwise extremely fine and good style, rare.</i>		1
----	---	---	------	--------------	--	--	--	---

<i>Lot No.</i>	<i>Syl. No. &amp; Wt.</i>			
1462	1599 6.02	Drachm, similar, <i>obv.</i> ear-guard raised on helmet, with volute and palmette, TH over $\Delta$ behind, <i>rev.</i> horseman with club as last. <i>Obv.</i> B.M.C. Pl. 9, 9, <i>rev.</i> Pl. 9, 10. <i>Very fine and of good style, very rare variety.</i>	21	0 0
			1	
1463	1600 6.05	Drachm, similar, <i>obv.</i> volute ornament only at back of helmet, no letters (?) behind, <i>rev.</i> flail at shoulder, T on ground line. B.M.C. 7 var. <i>Very fine and rare.</i>	40	0 0
			1	
1464	1601 6.01	Drachm, similar, <i>obv.</i> TH over II' behind head, <i>rev.</i> ΤΕΛΕΦΑΝΤΟ (reversed), faintly discernible in exergue. B.M.C. 6. <i>About very fine and rare.</i>	26	0 0
		<i>Ex Pozzi Collection (Lot 1245).</i>	1	
1465	1602 6.12	Drachm, similar, <i>obv.</i> crescent countermark on cheek, <i>rev.</i> same lettering. <i>Extremely fine, well centred, and good style, a very pleasing coin, rare.</i>	52	0 0
		<i>Ex Empedocles Collection.</i>	1	
1466	1603 6.12	Drachm, similar, same letters (?) behind head, counter-marked as last, <i>rev.</i> TH under horse. B.M.C. 7. <i>Surface test-mark on obverse, otherwise very fine and rare.</i>	34	0 0
		<i>Ex Hamburg Sale (1933).</i>	1	
1467	1604 5.99	Drachm, similar, no ornament on helmet and no initials behind, <i>rev.</i> TH in exergue. B.M.C. 7 var. <i>Extremely fine and sharp, a pleasing coin of good style, rare.</i>	60	0 0
			1	
1468	1605 2.99	Hemidrachm, <i>obv.</i> head of Athena as last coin, <i>rev.</i> horse's head right, $\Phi\text{AP}\Sigma$ round. <i>Fine and scarce.</i>	5	10 0
			1	
1469	1606 1.35	Trihemionbol, <i>obv.</i> head of Athena facing in triple-crested Corinthian helmet, <i>rev.</i> horseman right, striking with flail, $\Phi\text{AP}\Sigma$ . <i>Fine and scarce.</i>	9	10 0
		<i>Ex Bement Collection (Lot 936).</i>	1	

### Pherae

1470	1607 5.81	Circa B.C. 480-450, Drachm, youth, with chlamys and flying petasus, throwing bull right, $\Gamma\text{A}\Delta$ (?) reversed above, <i>rev.</i> horse with trailing rein galloping left, lion's head fountain right, $\Phi\text{E}-\text{PA}$ . B.M.C. Pl. X, 2 var. <i>Very fine and rare.</i>	17	10 0
			1	



<i>Lot</i>	<i>Syl. No.</i>	<i>No. &amp; Wt.</i>				
1478	1616 2.77	Hemidrachm, Heracles' head right, <i>rev.</i> forepart of horse right, ΣΚΟ below. B.M.C. 49/2. <i>Very fine and scarce.</i>	1	17	10	0
<b>Thebae</b>						
1479	1617 2.40	B.C. 302-286, Hemidrachm, veiled head of Demeter, wearing corn-wreath, to right, <i>rev.</i> Protesilaus leaping ashore from galley, ΘΗΒΑΙΩΝ left. <i>Very fine and rare.</i>	1	13	0	0
<b>Tricca</b>						
1480	1618 1619	Circa B.C. 480-400, Hemidrachm, wt. 2.47 gms., Thessalian with forepart of bull right, <i>rev.</i> forepart of horse right, ΤΡΙΚΚΑΙΩΝ, B.M.C. 159, <i>very fine and scarce, ex Pozzi Collection (Lot 1261), illustrated</i> ; Obol, wt. 0.83 gms., horse right, <i>rev.</i> Athena charging left, ΤΡΙΚΑ, <i>about fine and rare.</i>	2	6	0	0
<b>Thessalian League</b>						
1481	1620 1621	B.C. 196-146, Double Victoriata, wt. 6.07 gms., head of Zeus laureate to right, <i>rev.</i> Athena Itonia standing right between ΘΕΣΣΑΛΩΝ, ΔΑΜΟΘΕΟ above, ΦΙΛΟΞΕΝΙ below, <i>extremely fine, illustrated</i> ; another, wt. 6.05 gms., similar, <i>obv.</i> ΙΤΑΛΟΥ to left of Zeus, <i>rev.</i> ΔΙΟΚΛΗΣ above, ΝΙ below shield, <i>very fine. First ex Pozzi Collection (Lot 1264).</i>	2	8	0	0
1482	1622 1623	Double Victoriata, wt. 5.35 gms., similar, <i>obv.</i> ΝΙΚΟΚΡΑΤΟΥΣ, <i>rev.</i> [Φ]ΙΛΟΞΕΝΙ above, palm branch right, <i>fine, ex Pozzi Collection (Lot 1266)</i> ; another, wt. 6.15 gms., similar, ΚΥΑΛΟΝ above, ΠΕΤΡΑΙΟΣ below, <i>extremely fine, ex Pozzi Collection (Lot 1265), illustrated.</i>	2	9	10	0
1483	1624 1625 1628	Double Victoriata, wt. 5.88 gms., similar, <i>rev.</i> [Μ]ΕΝΕΚΡΑΤ above, ΑΛΕΞΑΝΔΡ[—] below, <i>extremely fine, Pozzi (1263)</i> ; Drachm, wt. 4.12 gms., Apollo head right, <i>rev.</i> similar, ΓΟΥΝΥ beside Athena, <i>very fine, illustrated</i> ; Hemidrachm, wt. 2.14 gms., types as Double Victoriates, B.M.C. 44/6, <i>very fine, but reverse double-struck, Pozzi (Lot 126).</i>	3	13	10	0

			Lot	Syl. No.	
			No.	& Wt.	
5	10	0	1484	1026 4.25	Drachm, head of Athena right, <i>rev.</i> reined horse right, ΘΕΣΣΑΛΩΝ, mono. below horse. B.M.C. 43. <i>Fine and rare.</i>
∴ <i>Ex Naville</i> (1923), <i>Lot</i> 1798.					
74	0	0	1485	1027	Drachm, head of Athena right, mono. behind, <i>rev.</i> reined horse to right, ΑΛΚΕΤΟΥ above and ΞΕ below horse, [—]ΣΙΙΑΤΡΟΣ in exergue. <i>Extremely fine and very rare.</i>
∴ <i>Ex Hirsch XXVI</i> (1910), <i>Lot</i> 482, and <i>Bement</i> ( <i>Lot</i> 948) <i>Collections.</i>					

## ILLYRICUM

## Apollonia

5	10	0	1486	1029 to 1032	B.C. 229-100, Victoriata (?), wt. 3.56 gms., cow suckling calf, ΛΟΑ above, <i>rev.</i> double stellate pattern, ΑΠΟΛΙ ΠΟΠΙΟΥ, <i>very fine</i> ; another, wt. 3.29 gms., types similar, <i>obv.</i> ΑΙΒΑΤΙΟΣ above, corn-ear below, <i>rev.</i> ΑΠΟΛ ΧΑΙΦΗΝΟΣ, <i>fine</i> ; circa B.C. 100 and after, Denarii ? (2), wts. 3.76 and 3.66 gms., head left, <i>rev.</i> nymphs, <i>both fine.</i>
---	----	---	------	--------------------	---

## Dyrrachium

7	15	0	1487	1033 10.98	B.C. 450-330, Stater, cow suckling calf to right, Α above, <i>rev.</i> double stellate pattern, ΔΥΡ and club. <i>Very fine.</i>
20	0	0	1488	1034 10.78	Stater, similar, cow to left, mono. above. <i>Very fine.</i>
∴ <i>Ex Pozzi Collection</i> ( <i>Lot</i> 1271).					
12	10	0	1489	1035 11.20	Stater, similar, cow to right, plain above. <i>Almost very fine.</i>
∴ <i>Ex Ratto Sale</i> (1927), <i>Lot</i> 1068.					

10	10	0	1490	1036 to 1041	B.C. 229-100, Victoriates? (6), wts. 3.30 to 3.51 gms., types similar to last, various symbols and magistrates' names. <i>Mostly very fine.</i>
----	----	---	------	--------------------	---

Lot Syl. No.  
No. & Wt.

- 1491 <sup>1642</sup> Circa B.C. 360 to 280, Stater of Monunius, King of 14 0 0  
<sup>10.45</sup> Illyricum, cow suckling calf to right, above boar's jaw-  
bone, *rev.* double stellate pattern, BACIAEΩΣ  
MONOYIOY and ΔYP. B.M.C. p. 80, 2. *Very fine and*  
*rare.* 1

∴ *Ex Pozzi Collection (Lot 1276).*

### Illyrico-Paeonian (Damastium)

- 1492 <sup>1643</sup> Circa B.C. 400, Tetradrachm, laureate head of Apollo 42 0 0  
<sup>13.28</sup> right, *rev.* tripod on base, KHΦI on left, |Δ|AMAZ-  
|T|INΩ—. J. M. F. May, *Coinage of Damastion*, cf.  
No. 64. *Obverse of good style, very fine and very rare.* 1

- 1493 <sup>1644</sup> Tetradrachm, similar but of barbarous style, *rev.* —ΣTI 20 0 0  
<sup>12.78</sup> NΩN. May, No. 69a, this coin. *Fine and very rare.* 1

∴ *Ex Pozzi Collection (Lot 1280).*

- 1494 <sup>1645</sup> Tetradrachm, similar, Apollo head left, *rev.* KAKIO 42 0 0  
<sup>12.78</sup> below tripod. May, No. 106, this coin. *Fine style for*  
*these issues, very fine and sharp, very rare.* 1

∴ *Ex Ars Classica XII (1926), Lot 1308.*

- 1495 <sup>1646</sup> Drachm (?), head of nymph left in saccus, *rev.* ingot 6 10 0  
<sup>2.92</sup> with lifting thong, inscription around. cf. May, Pt. XII,  
30/31. *Fine and rare.* 1

## EPIRUS

### Ambracia

- 1496 <sup>1647</sup> B.C. 238-168, Drachm, veiled and wreathed head of 4 10 0  
<sup>8.41</sup> Dione left, *rev.* obelisk between AM, in olive-wreath.  
B.M.C. 1. *Fine.* 1

∴ *Ex Pozzi Collection (Lot 1281).*

### Cassope

- 1497 <sup>1648</sup> B.C. 238-168, Didrachm (?), head of Zeus right, *rev.* 13 0 0  
<sup>4.86</sup> eagle standing right on thunderbolt, KΑΣΣΩΠΙΑΙΩΝ,  
in oak-wreath. B.M.C. 10. *Very fine.* 1

∴ *Ex Pozzi Collection (Lot 1283).*

Lot Syl. No.  
No. & Wt.

### Epirote Kingdom

#### Alexander (B.C. 342-326)

- 130 0 0 1498 <sup>1649</sup><sub>10.94</sub> Stater, head of Zeus right, with oak-wreath, 1' below, *rev.* thunderbolt, eagle to left, ΑΛΕΞΑΝΔΡΟΥ ΤΟΥ ΝΕΟΛΙΤΟΥ ΑΜΟΥ. Vlasto, Num. Chron. 1926, p. 166, 10, Pl. X, 8. *Obverse a little off-centre, but very fine, reverse extremely fine, of the highest rarity.* 1

∴ *Ex Ars Classica XVII (1934), Lot 445.*

#### Pyrrhus (B.C. 295-272)

- 56 0 0 1499 <sup>1650</sup><sub>16.52</sub> Tetradrachm, head of Zeus left, with oak-wreath, *rev.* Dione seated left, holding sceptre and veiling herself, ΒΑΣΙΛΕΩΣ ΠΥΡΡΟΥ. B.M.C. 6/7 var. *Flan slightly cracked but very fine and very rare.* 1

∴ *Ex Pozzi Collection (Lot 1287).*

- 340 0 0 1500 <sup>1651</sup><sub>8.89</sub> Didrachm, head of Achilles to left, wearing Athenian helmet on which is griffin, *rev.* Thetis left on sea-horse to right, holding Acrilles' shield, ΒΑΣΙΛΕΩΣ ΠΥΡΡΟΥ. B.M.C. 8. *A very fine coin and of the highest rarity.* 1

∴ *Ex Naville IV (1922), Lot 528.*

- 120 0 0 1501 <sup>1652</sup><sub>5.54</sub> Octobol, head of Persephone in corn-wreath right, a star behind, *rev.* statue of helmeted Athena with spear and shield to left, thunderbolt on left, ΒΑΣΙΛΕΩΣ ΠΥΡΡΟΥ. B.M.C. 9. *Obverse extremely fine and of exceptionally fine style, reverse somewhat double-struck but very fine, rare.* 1

∴ *Ex Pozzi (Lot 1288) and Ars Classica XVII (Lot 447) Collections.*

- 34 0 0 1502 <sup>1653</sup><sub>5.55</sub> Octobol, similar, *obv.* grapes behind head, *rev.* E in below thunderbolt. B.M.C. 12 var. *Fine only, rare.* 1

∴ *Ex Ars Classica XII (1926), Lot 1323.*

Lot Syl. No.  
No. & Wt.

### Epirote Republic (B.C. 238-168)

1503	1654 9.57	Stater, jugate heads of Zeus and Dione to right, monos. to left and beneath, <i>rev.</i> bull to right, ΑΙΙΕΙΡΩΤΑΝ, in oak-wreath. B.M.C. 8. <i>Reverse double-struck but very fine and very rare.</i>	24 0 0	1
		∴ <i>Ex Ratto (Lugano), 4th April 1927, Lot 1107.</i>		
1504	1657 4.97	Half-Stater, head of Zeus right, mono. EK backwards behind, <i>rev.</i> eagle standing right on thunderbolt, ΑΙΙΕΙΡΩΤΑΝ. B.M.C. 26 var. <i>Extremely fine.</i>	8 0 0	1
		∴ <i>Ex Pozzi Collection (Lot 1290).</i>		
1505	1658 5.09	Half-Stater, similar. B.M.C. 23. <i>Extremely fine.</i>	12 0 0	1
		∴ <i>Ex Bement Collection (Lot 974).</i>		
1506	1655 1656 1659	Half-Staters (2), wts. 4.62 and 4.76 gms., similar, but mono. differs on second specimen, <i>both fine</i> ; Half-Stater, wt. 4.76 gms., similar, but <i>obv.</i> head left, three monos., <i>only fine.</i>	8 0 0	3
1507	1660 1661	Third-Stater, wt. 3.26 gms., heads of Zeus and Dione right, <i>rev.</i> thunderbolt, ΑΙΙΕΙΡΩΤΑΝ, B.M.C. 42, <i>almost very fine, scarce, ex Bement Collection (Lot 975)</i> ; Sixth-Stater, wt. 1.54 gms., head of Zeus right, <i>rev.</i> similar to S.1660, <i>fine and scarce, ex Ratto, 1927 (Lot 1120).</i>	8 10 0	2

### CORCYRA

1508	1662 11.69	B.C. 585-500, Stater, cow to left, suckling calf, <i>rev.</i> double stellate pattern. B.M.C. 10. <i>Almost very fine.</i>	12 0 0	1
		∴ <i>Ex Pozzi Collection (Lot 1296).</i>		
1509	1663 10.54	Stater, similar. B.M.C. 10. <i>Very fine.</i>	7 10 0	1
		∴ <i>Ex Pozzi Collection (Lot 1295).</i>		

			<i>Lot</i>	<i>Syl. No.</i>			
			<i>No.</i>	<i>&amp; Wt.</i>			
21	0	0	1510	1664 1665	Half-Stater, wt. 5.90 gms., forepart of cow right, <i>rev.</i> stellate square, B.M.C. 18, <i>fine, ex Pozzi Collection (Lot 1297)</i> ; Diobol (?), wt. 0.80 gms., cockle-shell, <i>rev.</i> star, B.M.C. Pl. XXI/7, <i>fine.</i>		2
6	0	0	1511	1666 11.31	B.C. 450-400, Stater, cow to right, suckling calf, <i>rev.</i> double stellate pattern in square frame, KOP (?). cf. B.M.C. 66. <i>Very fine.</i>		1
6	10	0	1512	1667 11.11	Stater, similar. <i>In mint state.</i>		1
20	0	0	1513	1668 10.71	B.C. 400-300, Stater, types similar but neater workmanship, <i>obv.</i> star above, <i>rev.</i> spear-head below. <i>Very fine, from the Cefalonia Hoard.</i>		1
7	10	0	1514	1669 1670	Statens (2), wts. 10.54 and 10.80 gms., similar, (a) as last, <i>very fine</i> ; (b) <i>rev.</i> unstrung bow, <i>fine only</i> ; both <i>from same Hoard.</i>		2
6	10	0	1515	1671 1672	Statens (2), wts. 10.82 and 10.10 gms., similar, (a) <i>obv.</i> grapes above, trident (?) in cow's flank, <i>rev.</i> large X on fourth side of square, <i>very fine, from same Hoard</i> ; (b) similar, <i>fair only, ex Pozzi Collection (Lot 1308).</i>		2
9	10	0	1516	1673 5.06	B.C. 300-229, Half-Stater, forepart of cow, KOPKY-PAION, <i>rev.</i> double stellate pattern in rectangular frame, ΣΩ, grapes and ivy-leaf. B.M.C. 195. <i>Very fine and scarce.</i>		1
						<i>∴ Ex Pozzi Collection (Lot 1309).</i>	
10	0	0	1517	1674 2.52	Quarter-Stater, amphora, at sides cantharus and oenochoe, K and P, <i>rev.</i> star, KOPKYPAI. <i>Very fine and scarce.</i>		1
						<i>∴ Ex Pozzi Collection (Lot 1310).</i>	
8	0	0	1518	1675	B.C. 229-48, Half-Stater, head of Dionysius in ivy-wreath to right, <i>rev.</i> pegasus to right, two monos. B.M.C. 351. <i>Very fine.</i>		1
						<i>∴ Ex Pozzi Collection (Lot 1313).</i>	
5	10	0	1519	1676 1677	Half-Statens (2), wts. 4.81 and 4.38 gms., similar, monos. vary. <i>Both fine.</i>		2

*Lot Syl. No.*  
*No. & Wt.*

1520	3531 1678	Half-Stater, similar, different mono., <i>very fine</i> ; Victoriate (?) of same period, wt. 2.81 gms., head of Dione right, <i>rev.</i> pegasus right, mono. below, in olive- wreath, <i>fine, ex Pozzi Collection (Lot 1314), illustrated.</i>	8 0 0
			2

## ACARNANIA

### Leucas

1521	1679 8.19	After B.C. 167, Didrachm, statue of Aphrodite to right, holding aphlaston, stag right, mono. to left, <i>rev.</i> prow to right, boar's head and caduceus right, ΜΑΡΑΙΟΣ ΑΕΥΚΑΔΙΩΝ above. <i>Very fine and rare.</i>	6 0 0
		<i>Ex Pozzi Collection (Lot 1319).</i>	1
1522	1680 8.05	Didrachm, similar, <i>obv.</i> eagle to left, <i>rev.</i> lion's head and mono. right, ΑΕΥΚΑΔΙΩΝ ΑΕΩΝ and mono. above. <i>Very fine and rare.</i>	6 10 0
		<i>Ex Pozzi Collection (Lot 1318).</i>	1

### Thyrrheium

1523	1681 9.61	After B.C. 168, Didrachm, beardless head of Achelous to right, ΞΕΝΟΜΕΝΗΣ behind, <i>rev.</i> Actian Apollo seated left, ΘΥΡΡΕΙΩΝ right, mono. to left. B.M.C. 193/13. <i>Fine and rare.</i>	10 0 0
			1

### Acarnanian League

1524	1682 2.11	B.C. 400-300, Quarter-Stater, head of Achelous to right, <i>rev.</i> F (ethnic initial). <i>Rather worn but very rare.</i>	5 0 0
			1
1525	1683 9.94	B.C. 250 (?) to 167, Stater, beardless head of Achelous to right, [ΑΥ]ΚΟΥΡΓΙΟΣ left, <i>rev.</i> Actian Apollo seated left, ΑΚΑΡΝΑΝΩΝ right. <i>Very fine and rare.</i>	40 0 0
		<i>Ex A. C. Headlam and Benson (Lot 498) Collections.</i>	1

Lot Syl. No.  
No. & Wt.

- 14 10 0 1526 <sup>1084</sup><sub>5.04</sub> Half-Stater, similar, *rev.* mono. to left. *Very fine and very rare.* 1  
*Ex Pozzi Collection (Lot 1322).*

## AETOLIA

## Federal Coinage

- 150 0 0 1527 S.— <sup>1085</sup><sub>8.58</sub> B.C. 279-168, gold Stater, head of Athena right, *rev.* Aetolia wearing kausia, seated on pile of shields to right, holding spear and a Nike, Artemis running to right, ΑΙΤΩΛΩΝ left. *Very fine and very rare.* 1  
*Ex Empedocles Collection.*

- 28 0 0 1528 <sup>1085</sup><sub>17.04</sub> Tetradrachm, Heracles' head in lion-skin right, *rev.* Aetolia, as last, holding spear and sword in scabbard, monos. to right, ΑΙΤΩΛΩΝ left. B.M.C. 8. *Obverse off-centre, otherwise very fine and rare.* 1  
*Ex Pozzi Collection (Lot 1324).*

- 72 0 0 1529 <sup>1086</sup><sub>10.53</sub> Stater, portrait head (?) laureate to right, *rev.* Aetolus wearing chlamys on left arm, bonnet at shoulder and sword-belt with scabbard, leaning on spear, right foot on rock, NK in mono. left, A below, ΑΙΤΩΛΩΝ right. *Very fine and very rare.* 1  
*Ex Pozzi Collection (Lot 1327).*

- 48 0 0 1530 <sup>1087</sup><sub>10.27</sub> Stater, similar, *obv.* ΦΙ below head, *rev.* similar, Δ to left. *Very fine and rare.* 1  
*Ex Pozzi Collection (Lot 1325).*

- 34 0 0 1531 <sup>1088</sup><sub>7.5</sub> Half-Stater, head of Artemis right, bow and quiver at shoulder, ΦΙ below, *rev.* Aetolia seated facing on pile of shields, mono. and trophy on right, ΑΙΤΩΛΩΝ on left. *Very fine and very rare.* 1  
*Ex Bement (Lot 1019) and Sir H. Weber (Lot 3124) Collections.*

*Lot Syl. No.*  
*No. & Wt.*

- 1532 <sup>1689</sup> Quarter-Stater, wt. 2.42 gms., head of Aetolia in flat 18 0 0  
<sup>1690</sup> bonnet to right, *rev.* Calydonian boar to right, monos.  
and spear below, ΑΙΤΩΛΩΝ above, *very fine*; another,  
wt. 2.31 gms., similar. monos. differ. *extremely fine*,  
*illustrated*. 2

### THE COPPER ISSUES

- 1533 Macedon, Kingdom, a series of coppers (170), sizes from  $\frac{3}{8}$ in. to 1in. approx., of Aeropus (2), Amyntas III (5), Perdiccas III (4), Philip II (34), Alexander III (48), Philip III (2), Cassander (24), Antigonos I (2), Interregnum (1), Demetrius Poliorcetes (5), Antigonos Gonatus (or Doson) (10), Demetrius II (3), Philip V (24), Perseus (6), considerable variety. *Mostly fine, some scarce*. 170
- 1534 Macedon, Cities, etc., coppers (96), sizes .4in. to .9in. approx., of Acanthus (4), Amphaxitis (1), Amphipolis (35), Aphytis (5), Apollonia (2), Bottice (2), Chalcidice (2), Dicaea (1), Mende (3), Orthagoreia (1), Pella (9), Philippi (4), Potidea (1), Scione (2), Thessalonica (19), Traelium (1), Tragilus (3), Uranopolis (1), various periods and types. *Mostly fine, some scarce*. 96
- 1535 Macedon, as a Roman Province, coppers (50), sizes .5in. to 1.1in. approx., pre-Imperial (26), Imperial issues (24), Claudius to Caracalla (or later). *Mostly fine, some scarce*. 50
- 1536 Macedon, Imperial coppers (48), sizes .7in. to 1in. approx., for Amphipolis (14), Augustus to Severus Alexander: Cassendra (2), Nero and Philip I; Edessa (6), Augustus to Gordian III; Pella (3), Gordian III (2) and Maximin I; Philippi (1), Commodus; Stobi (3), all Caracalla: Thessalonica (19), Julius Caesar to Herennius Etruscus. *Mostly fine, a few rare*. 48
- 1537 Thrace, autonomous coppers (556), sizes .4in. to 1in. approx., for Abdera (4), Aenus (6), Byzantium (2), Cabyle (1), Calchedon (1), Carcina (1), Cercinitis (1), Hephaestia Lemni (3), Istrus (1), Madytus (4), Maroneia (10), Mesembria (6), Myrina (1), Odessus (4), Perinthus (1), Samothrace (1), Sestus (5), Thasos (4). *Mostly fine, some scarce or rare*. 56

*Lot Syl. No.*  
*No. & Wt.*

- 38 0 0 1538 Thrace, Imperial coppers (36), for Anchialus (12), Septimus Severus to Maximin I, including a medallion (1½in.) of Gordian III, *rev.* Heracles attacking horseman, *fine and rare*; Bizya (2), Sept. Severus and Diadumenian; Byzantium (3), Elegabalus, Severus Alexander, and a medallion (1½in.) of Gordian III, *doubtful*; Dacia (1), Philip I; Deultum (5), Gordian III (4) and Philip I; Hadrianopolis (13), Hadrian to Gordian III, *mostly fine, some scarce.* 36
- 120 0 0 1539 Thrace, further Imperial coppers (108), sizes .65in. to 1.5in. approx., for Marcianopolis (18), Sept. Severus to Severus Alexander; Mesembria (7), all Philip II; Nicopolis (20), Sept. Severus to Elagabalus; Odessus (14), Lucius Verus to Gordian III; Pautalia (10), Lucius Verus to Geta; Perinthus (7), Trajan to Gallienus; Philippolis (6), Antoninus Pius to Sept. Severus; Serdica (5), Caracalla to Gallienus; Tomis (9), Geta to Gordian III; Topirus (1) of Antoninus Pius; Trajanopolis (6), Trajan to Geta; Viminia (4), Gordian III to Trajan Decius; Tyra (1), Caracalla. *Mostly fine, some scarce or rare.* 108
- 16 0 0 1540 Olbia, coins (2) in the form of a dolphin, sizes 1.25in. and .9in., both reading Θ Y. *Both very fine and scarce.* 2
- 16 10 0 1541 Olbia, others (2), similar, size .9in. as last, size .75in. without legend. *First scarce, other rare; both very fine.* 2
- 75 0 0 1542 Olbia, aes grave (size 2½in., wt. 3.2 ozs.), facing head of goddess with flowing hair to front, *rev.* sea eagle on dolphin, OABIH above (vide H.N.G. p. 272). *Edge a little broken, otherwise a very fine and nicely patinated coin, very rare, illustrated.* 1
- 15 10 0 1543 Olbia, same issue, copper, 1.35in., facing Gorgoneion head, *rev.* eagle on dolphin; another, 1.1in., *obv.* similar, *rev.* wheel with four spokes, A—P—I—X in angles. *Both fine and rare.* 2
- 19 0 0 1544 Olbia, struck coppers (66), sizes .4in. to 1in. approx., an interesting series, various types and issues. *Mostly fine, some scarce or rare.* 66
- 20 0 0 1545 Tauric Chersonesus, Panticapaeum, coppers (48), sizes .4in. to .9in. approx., various types and issues. *Many very fine, some scarce.* 48

<i>Lot</i>	<i>Syl. No.</i>			
<i>No.</i>	<i>&amp; Wt.</i>			
1546	Tauric	Chersonesus, coppers (33), sizes .35in. to 1in. approx., for Cercinitis (1), Chersonesus (32); Thracian Chersonesus, coppers (28), for Aegospotami (2), Alopecconesus (1), Cardia (7, including one of Nero), Coela (1) of Gallienus, Crithote (1), Elaeus (2), Lysimachia (14); Thracian Kings, coppers (6), Lysimachus (5), Rhoeometalces I (1); and a copper of Samothrace, regal or autonomous except as stated. <i>Many fine or better, a few rare.</i>	42	0 0
			68	
1547	Thessaly,	coppers (63), sizes .45in. to .85in. approx., for the Confederacy (9), Aenianes (5), Alus (3), Atrax (3), Cierum (2), Crannon (7), Gomphi (2), Gonnus (1), Gyryton (2), Homolium (1), Lamia (5), Larissa (23). <i>Mostly about fine, a few scarce.</i>	22	0 0
			63	
1548	Thessaly,	further coppers (55), similar sizes, for Magnetes (9), Malienses (3), Meliboea (1), Melitae (4), Metropolis, Oeta (4), Pelinna (4), Paparethus, Perrhaebi (2), Peumata (1), Philistis (1), Phalanna (5), Pharcadon (2), Pharsalus (7), Pherae (4), Proena (1), Scotussa (3), Thebae (1), Tricca (1). <i>Mostly fine, some scarce or rare.</i>	18	10 0
			55	
1549	Illyricum (and Islands),	coppers (23), sizes .5in. to 1in. approx., for Appolonia (5), Byllis (1), Heraclea (1), Dyrrachium (5), Oricus (3), Paros (5), King Ballaeus (3). <i>Mostly fine, some rare.</i>	26	0 0
			23	
1550	Epirus,	coppers (35), sizes .5in. to 1in. approx., for the Republic (16), King Pyrrhus (6), Ambracia (10), Cassope (1), Dodona (1), Molossi (1). <i>Mostly fine or very fine, some scarce.</i>	8	10 0
			35	
1551	Corcyra,	coppers (39), sizes .4in. to 1in., various periods and issues. <i>Mostly fine or very fine, some scarce.</i>	7	10 0
			39	
1552	Acarnania,	coppers (26), sizes .4in. to .9in. approx., for Leucas (11), Medeon (1), Oeniadae (12), Thyrrheium (2); Aetolia (17). <i>Mostly fine or very fine, a few scarce.</i>	15	0 0
			43	

## END OF SALE

First Day's Sale	...	£26,745	0	0
Second Day's Sale	...	£7,742	15	0
Total	...	£34,487	15	0

# GLENDINING & Co., Ltd.

7, Blenheim Street,  
New Bond Street, London, W.1.

(Telephone: MAYfair 0416)

---

## OPEN DAILY FOR THE RECEPTION OF FINE ART PROPERTY

Expert advice freely given to intending sellers.

We insure all goods in our custody (unless instructed to the contrary)  
charging a premium of 5/- per £100.

---

## PROMPT SETTLEMENTS

---

Notices of all Sales appear in the *Daily Telegraph* on Mondays  
and *The Times* on Tuesdays.

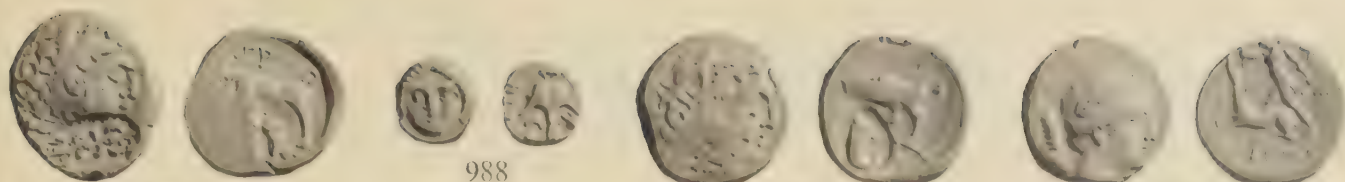
---

We are pleased to execute bids, free of charge,  
for buyers unable to attend the Sales.

---

## VALUATIONS FOR PROBATE AND INSURANCE

Terms on application.



989

988

990

991



992

993

994

995



996

997

998

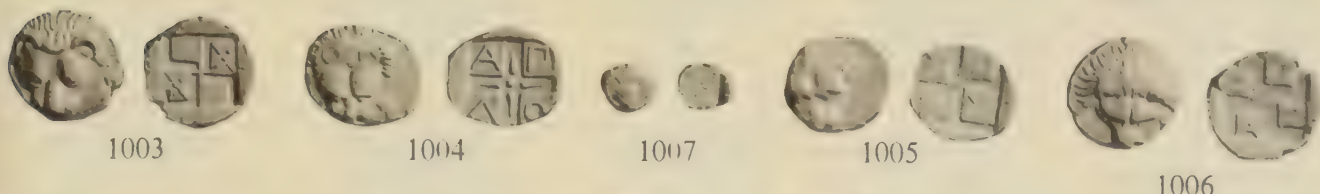
999



1000

1001

1002



1003

1004

1007

1005

1006



1008

1009

1010

1011



1012

1013

1014

1015



1016

1017

1018

1019





1020



1021



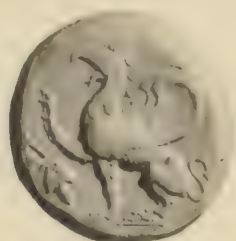
1022



1023



1024



1025



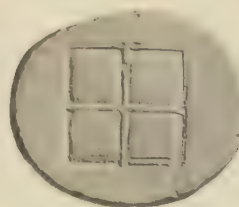
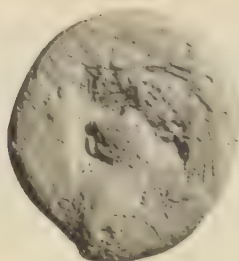
1026



1027



1028



1029



1030



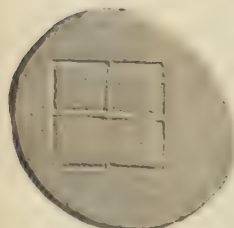
1033



1031



1032



1034



1035



1037



1036



1038



1039



1040







1041



1042



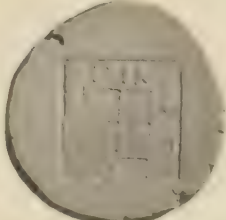
1045



1043



1044



1046



1047



1048



1049



1050



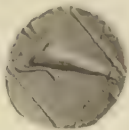
1051



1052



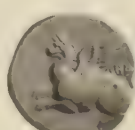
1053



1054



1055



1056



1057



1058



1059



1060



1061



1062



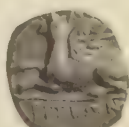
1063



1064



1065



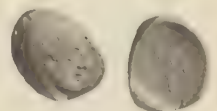
1066



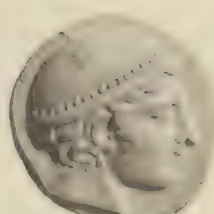
1067



1068







1069

1070

1071

1072

1073



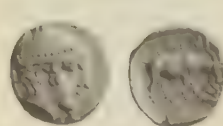
1074



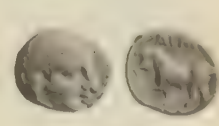
1075



1076



1077



1078



1079



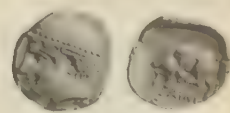
1080



1081



1082



1083



1087



1085



1086



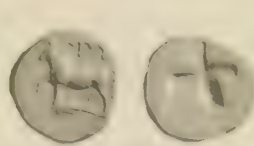
1088



1089



1090



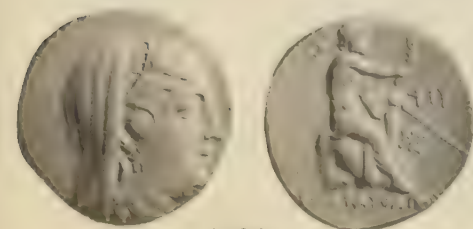
1091



1092



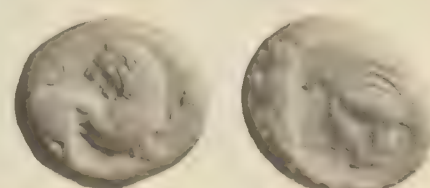
1093



1094



1096



1095





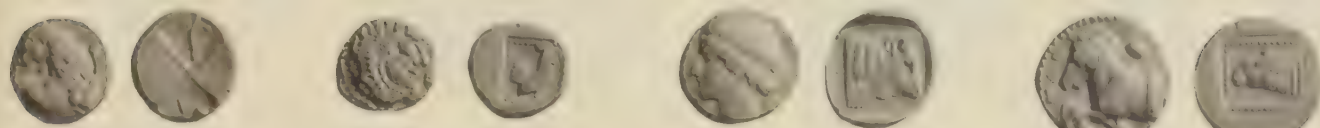
1097

1098

1099

1100

1101



1102

1103

1104

1106



1107

1105

1108



1109

1110

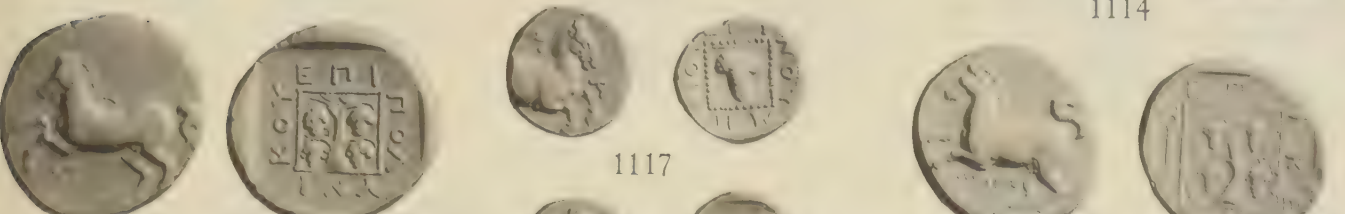
1111



1112

1113

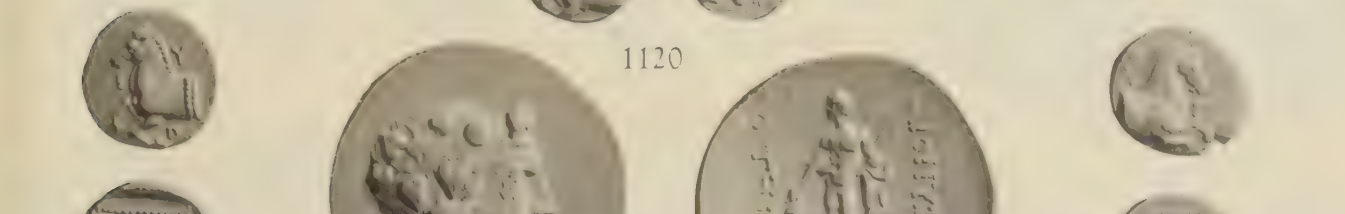
1114



1115

1117

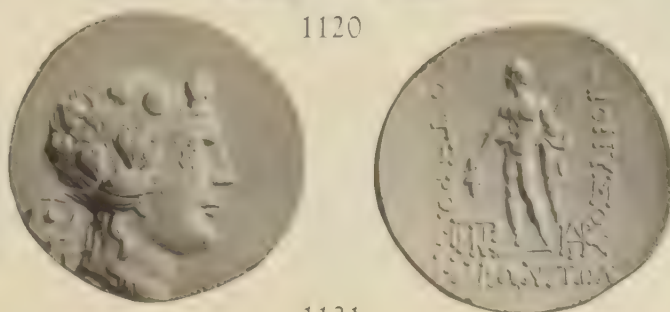
1116



1118

1120

1119



1121





1123



1124



1122



1125



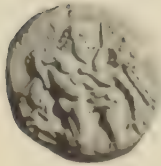
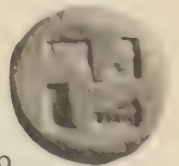
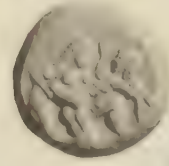
1126



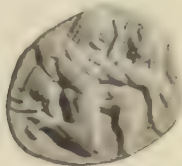
1128



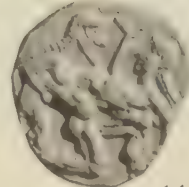
1129



1131



1132



1133



1134



1135



1136



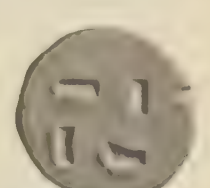
1137



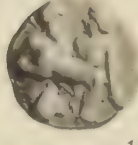
1138



1139



1140



1141



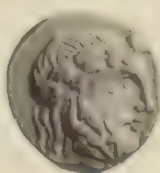
1142



1143



1144



1145



1146



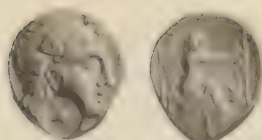
1147







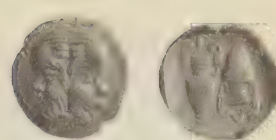
1147



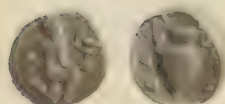
1148



1149



1150



1151



1152



1155



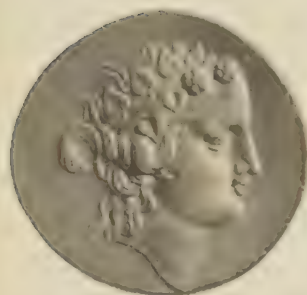
1156



1153



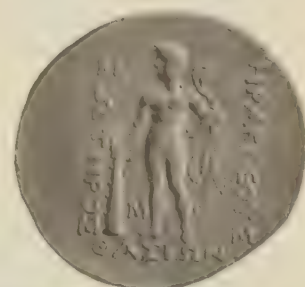
1154



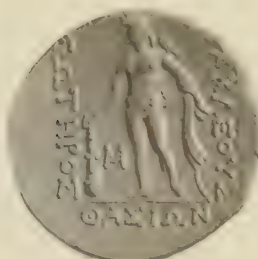
1157



1158



1159



1160



1161



1162



1163



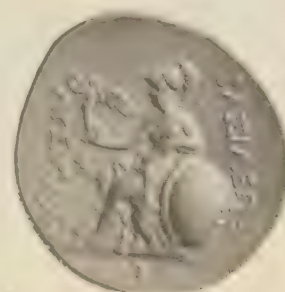
1164



1165



1166







1167



1168



1170



1169



1171



1172



1174



1173



1176



1175



1177



1178



1179



1180



1181



1183



1182



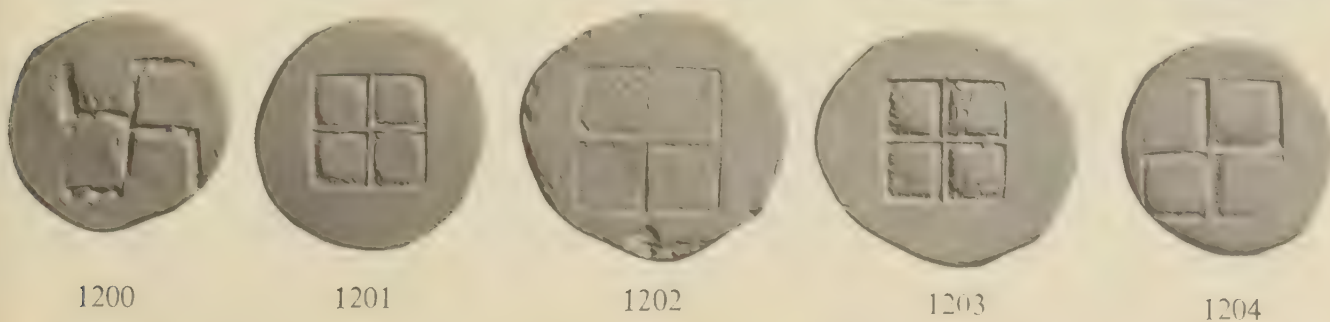
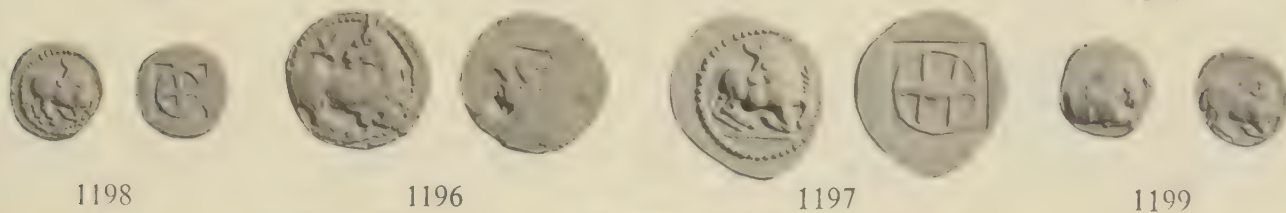
1185



1184















1231



1232



1233



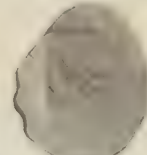
1235



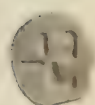
1234



1236



1237



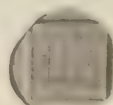
1238



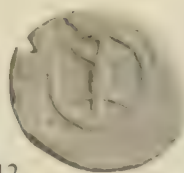
1239



1240



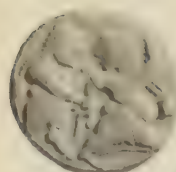
1242



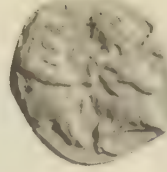
1243



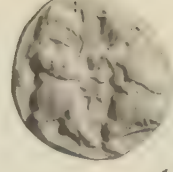
1244



1245



1246



1247



1248



1249



1250



1251



1252



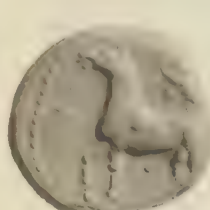
1253



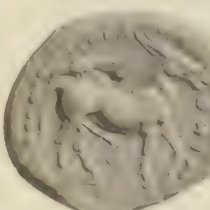
1254



1255



1256



1257



1258





1259



1260



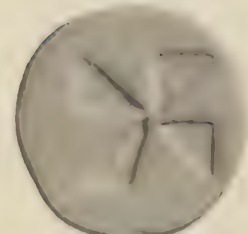
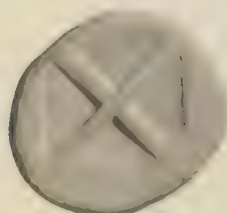
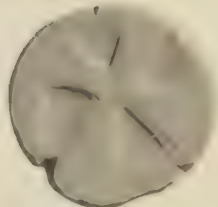
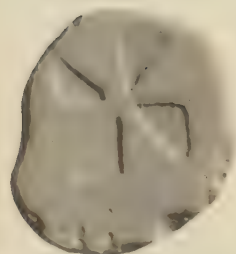
1263



1262



1261



1265



1266



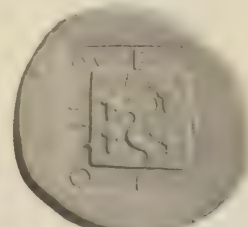
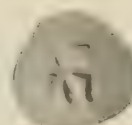
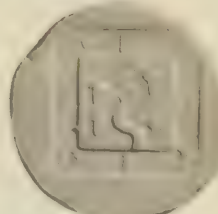
1264



1267



1268



1269



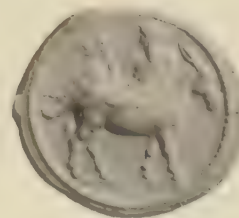
1270



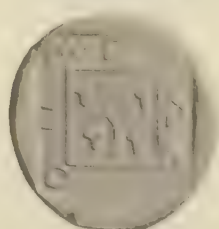
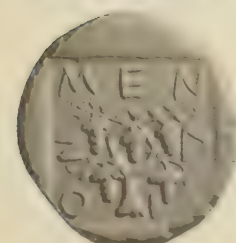
1271



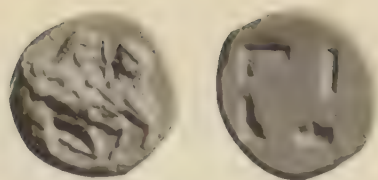
1272



1273







1276



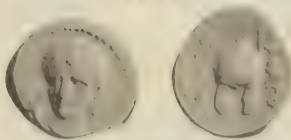
1278



1277



1279



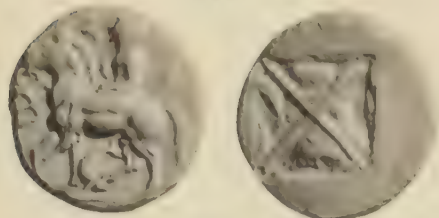
1280



1282



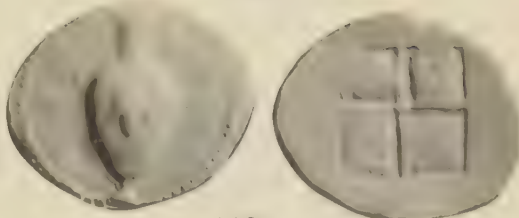
1285



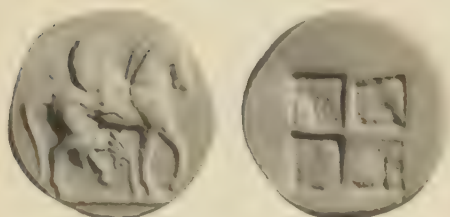
1283



1287



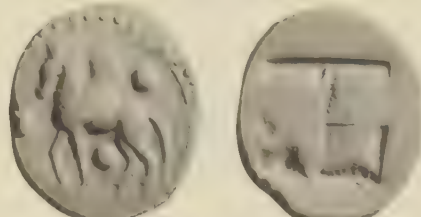
1286



1288



1293



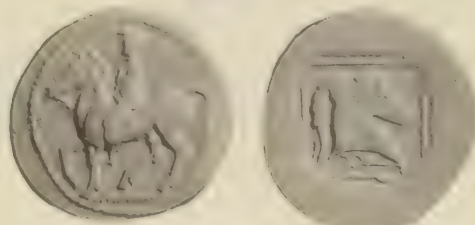
1289



1291



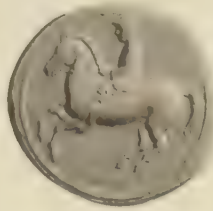
1295



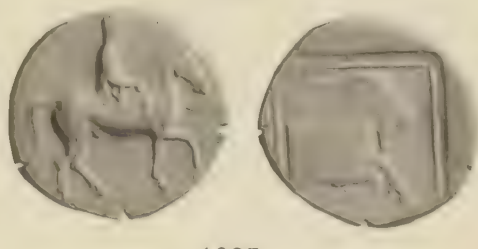
1292



1294



1296



1297



1298



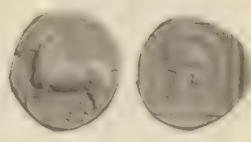
1302



1301

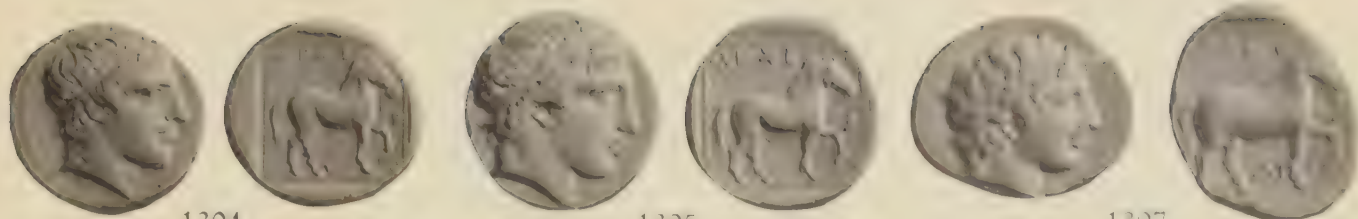


1300



1303

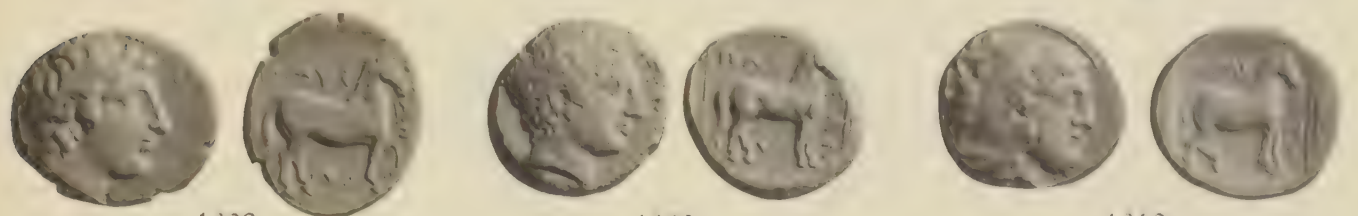




1304

1305

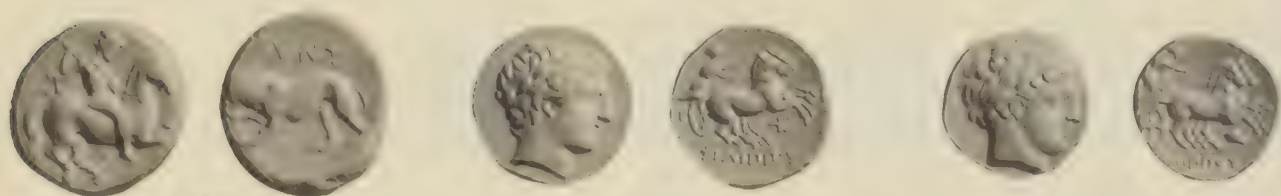
1307



1308

1309

1310



1311

1312

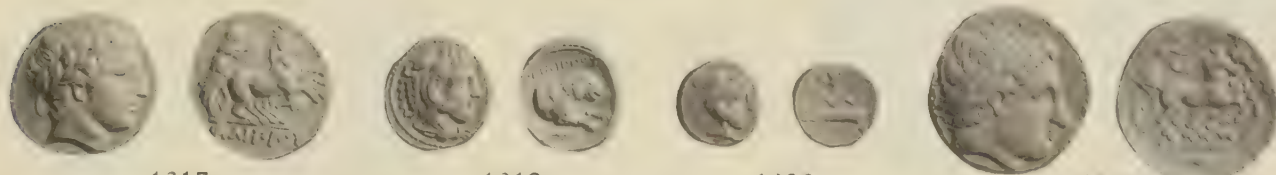
1313



1314

1315

1316

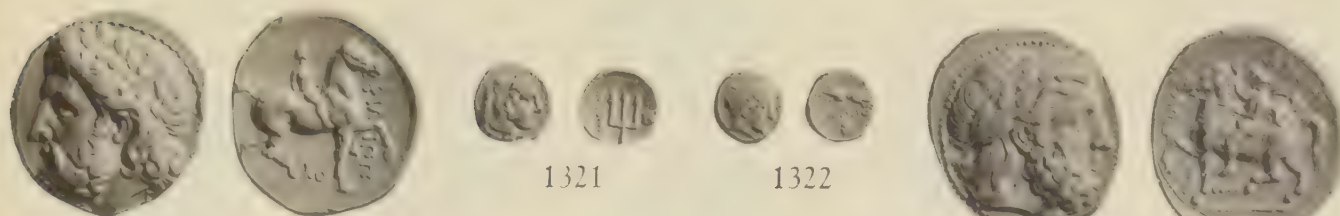


1317

1319

1320

1318



1323

1321

1322

1324



1325

1326

1327









1356



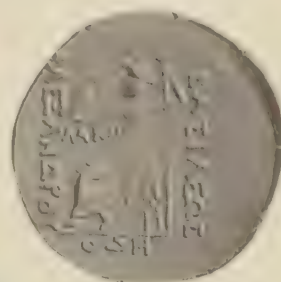
1359



1360



1361



1363



1364



1365



1366



1367



1368



1369



1370







1371



1372



1373



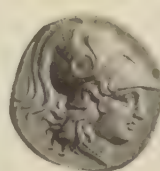
1374



1380



1375



1381



1382



1383



1384



1386



1387



1388



1390



1391



1389





1392



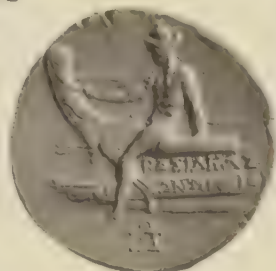
1393



1394



1395



1396



1397



1398



1400



1402



1403



1404



1405



1406







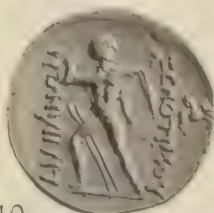
1407



1408



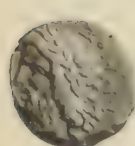
1410



1411



1409



1412



1413



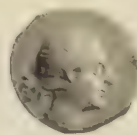
1414



1415



1418



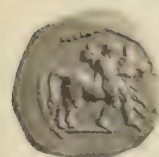
1416



1417



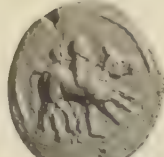
1419



1420



1421



1422



1423



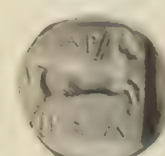
1424



1425



1426



1427



1428



1429



1430



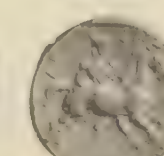
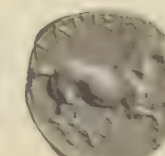
1431



1432



1433











1466



1467



1468



1469



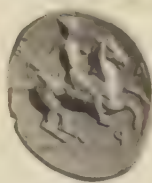
1472



1470



1471



1475



1476



1477



1474



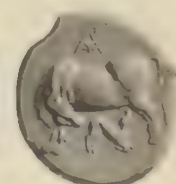
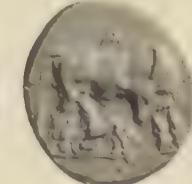
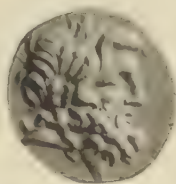
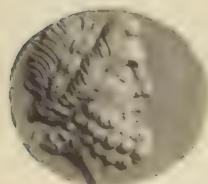
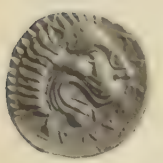
1478



1479



1480



1482



1481



1483



1484



1485



1487



1488



1489



1491



1492



1493



1495



1494

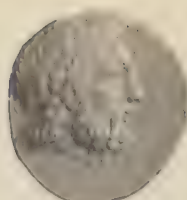




1496



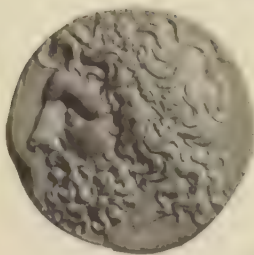
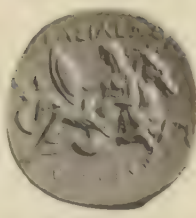
1497



1498



1500



1499



1501



1502



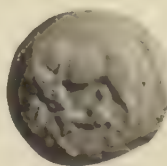
1503



1504



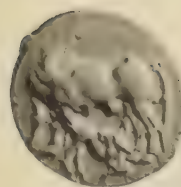
1505



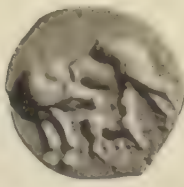
1508



1509



1511



1512



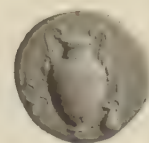
1513



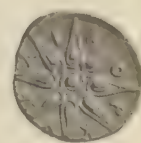
1516



1518



1517



1520



1521



1522







1523



1524



1525



1526



1528



1527



1529



1531



1530



1532



1542





# PRICED CATALOGUES

## Coins

---

*A*FTER each sale these catalogues are issued with the prices realised printed in the margin opposite each lot, thus giving at a glance a reliable guide to values.

The final test of value must always be auction prices rather than the figures given in books of reference for changing times and fashions soon render the latter obsolete and misleading.

On the average we issue twelve Coin and Medal catalogues a year, some of which are usually of sales of important collections. The **priced catalogues** are posted to subscribers as soon as ready, usually about a week after the date of sale and the subscription is . . . .

**THIRTY SHILLINGS** per annum

# GLENDINING & CO., LTD.

## AUCTIONEERS & VALUERS

of

*Ancient Greek, Roman and Egyptian Antiquities : Books :  
Ceramics : Coins : Ethnographical Items : Furniture :  
Jewellery : Military and Naval Medals : Objects of Vertu :  
Oriental Works of Art : Postage Stamps : Silver : etc.*

### CASH ADVANCES

If required, we are pleased to make cash advances (at our valuations) on Lots sent in for absolute sale.

### COMMISSION FOR SELLING

12½% on the amount realised

5% on reserve prices for Lots  
remaining unsold

Minimum Charge  
of  
Ten Shillings  
per Lot.

SETTLEMENT MADE 14 DAYS AFTER DATE OF SALE

### EXPERT ADVICE

Expert advice is immediately available and no charge is made for the examination of property submitted to these Rooms with a view to Sale by Auction. Visits to Town and Country houses for the purpose of advising intending sellers arranged at a nominal charge

### VALUATIONS

Probate and Insurance Valuations on Collections and all Household Properties at recognised scale of charges. The valuation fee is refunded if the property involved is placed in our hands for sale within six months of the date of valuing.

*Further information on application to the Auctioneers at:*

7, Blenheim Street, New Bond Street, London, W.1.

(Telephone: MAYfair 0416)